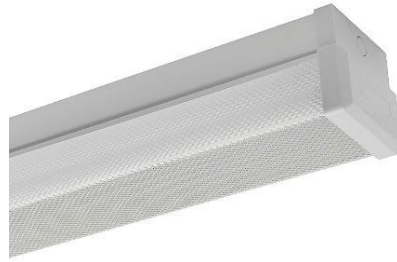


## CLEVERTRONICS ECONOMY LITHIUM ODYSSEY QUANTUM 1200MM LED DIFFUSED BATTEN – LOW POWER OUTPUT



### PRODUCT INFORMATION

Catalogue Number	EBS4LEDS-LO-DIF-MS-HL-LI
MIC	AUB03510100001
Description	Economy Lithium Odyssey Quantum 1200mm LED Diffused Batten with Hi/Lo Microwave Sensor Control of the Lamps (10%-100%)
Construction	Powder Coated Steel Body with Acrylic Prismatic Diffuser and PC/ABS End Caps
Mounting	Surface Mount
Dimensions L x W x H	1238mm x 120mm x 108mm
Weight	3.3 kg
Operating Mode	Sustained
Testing System	N/A - Manual test switch
Battery	Lithium Iron Phosphate, 3.2V 3000mAh
Charging Method	Intelligent Current Limited Constant Voltage
Diffuser	Acrylic Prismatic
Driver / Ballast	HL Driver – 55W, 500-1200mA, 12-50V
Lamp(s)	LED Strip Module, 4,000K Natural White, 50,000h Life [L70/B50 Ta 40°C], Ra>80
Operating Voltage	240V AC; 50Hz
Power Factor	0.95
Total lumen output	2437lm @ 120lm/W
Power Consumption	20W (Lamps ON) 0.4W (Lamps OFF, Standby)
IP Rating	IP20
Operating Temperature	0°C to 40°C
AS2293 Classification	C <sub>0</sub> =D50 C <sub>90</sub> =D16

### REPLACEMENT PARTS

PART NUMBER	DESCRIPTION
1560156	Battery, Eco Lith 3.2V, 3.0Ah 200mm lead, Bracket
8002695	PCA: LED Strip 8S6P, ALS-13-840-0-02-B
1330070	HL Driver – 55W, 500-1200mA, 12-50V
1190118	SENSOR: Microwave Motion IP20, MC049V
ELIFE-X-LI-CKIT-2LED-SL-NP	Lifelight, Control Only, 2LED, 3.0Ah, 325mA

*The product details described in this document are current as at the version date of the document. We reserve the right to change product design, specifications or materials (Specifications) as part of our continuous improvement program. Please confirm the applicable Specifications at the time of placing your order*