

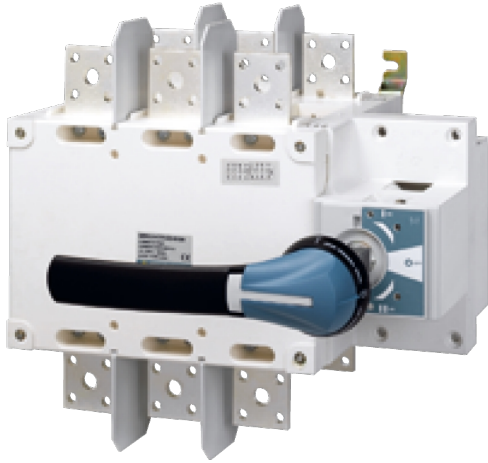
Catalogue No: **SCO2503PSTD**

SCO KIT 250A 3P STD (I-O-II) 41AC3025

Power Distribution and Protection > Isolators and Transfer Switches > Transfer Switches > Socomec Manual Transfer Switches > SCO Manual Transfer Switch > SCO 3 Pole Changeover Kits with External Handle and Shaft



KIT - 250A 3 pole changeover switch Includes Handle and Shaft



Representative Photo Only
(actual product may vary based on configuration selections)

- Standard (I-O-II) and make before break (I-I&II-II) options available covering any application requirement
- Three stable positions (I-O-II) not affected by voltage drops or vibrations ensuring the connected load is protected against possible network interference
- Easy connections thanks to copper bar connection kit accessory for 2000 to 3200A switches enabling the use of flat or edgewise connection with top or bottom bridging.
- Compatibility with the ergonomic IP65 S-Type Handles which features interlocking (in the ON position), padlocking, UV and chemical agent resistive material and the choice of standard blue or red / yellow colour

SPECIFICATIONS

Component Type Power Distribution & Protection	Manual Changeover Switch
Number of Poles	3
Ie, Rated Operational Current, AC-31b, 415V	250 A@415V
Ui, Rated Insulation Voltage	1000 V (rms)
Uimp, Impulse Withstand Voltage	12 kV
Ie, Rated Operational Current, AC-21a, 400V	250 A@400V
Ie, Rated Operational Current, AC-21a, 690V	200 A@690V
Ie, Rated Operational Current, AC-22a, 690V	160 A@690V
Ie, Rated Operational Current, AC-23a, 400V	250 A@400V
Ie, Rated Operational Current, AC-23a, 690V	125 A@690V
Ie, Rated Operational Current, DC-21a, 220V	250 A@220V
Standards Compliance	IEC 60947-3 IEC 60947-6-1
Ie, Rated Operational Current, DC-21a, 440V	200 A@440V
Ie, Rated Operational Current, DC-22a, 220V	250 A@220V
Ie, Rated Operational Current, DC-22a, 440V	200 A@440V
Ie, Rated Operational Current, DC-23a, 220V	200 A@220V
Ie, Rated Operational Current, DC-23a, 440V	200 A@440V
kW Rating, AC-23a, 415V, 3ph	100 kW @415V
kW Rating, AC-23a, 400V, 3ph	132 kW @400V
Current, Fuse-Protected Short-Circuit Capacity, 400V	50 kA
Busbar Width, Max	32 mm, max
Mechanical Service Life	10000 cycles
Weight	3.8 kg
Cable Cross Section (Min)	95 mm ² mm
Cable Cross Section (Max)	150 mm ² mm
Ie, Rated Operational Current, AC-23a, 415V	200 A@415V
Icw, short time withstand current, 1s (rms)	8 kA for 1s

Catalogue No: **SCO2503PSTD**

SCO KIT 250A 3P STD (I-0-II) 41AC3025

Power Distribution and Protection > Isolators and Transfer Switches > Transfer Switches > Socomec Manual Transfer Switches > SCO Manual Transfer Switch > SCO 3 Pole Changeover Kits with External Handle and Shaft



le, Rated Operational Current, AC-21a, 415V

250 A@415V

REFERENCES

IECEX Certificate -

Supplier Declaration of
Conformity: -

Installation Guide: -

User Manual: -

Manufacturer Datasheet: -

Manufacturer Catalogue
& Product Selection: -