

# Catalogue No: **SCO2004PSTD**

## SCO KIT 200A 4P STD (I-O-II) 41AC4020

Power Distribution and Protection > Isolators and Transfer Switches > Transfer Switches > Socomec Manual Transfer Switches > SCO Manual Transfer Switch > SCO 4 Pole Changeover Kits with External Handle



### KIT - 200A 4 pole changeover switch Includes Handle and Shaft

- Standard (I-O-II) and make before break (I-I&II-II) options available covering any application requirement
- Three stable positions (I-O-II) not affected by voltage drops or vibrations ensuring the connected load is protected against possible network interference
- Easy connections thanks to copper bar connection kit accessory for 2000 to 3200A switches enabling the use of flat or edgewise connection with top or bottom bridging.
- Compatibility with the ergonomic IP65 S-Type Handles which features interlocking (in the ON position), padlocking, UV and chemical agent resistive material and the choice of standard blue or red / yellow colour

Representative Photo Only  
(actual product may vary based on configuration selections)

#### SPECIFICATIONS

Component Type Power Distribution & Protection	Manual Changeover Switch
Number of Poles	4
Ie, Rated Operational Current, AC-31b, 415V	200 A@415V
Ui, Rated Insulation Voltage	800 V (rms)
Uimp, Impulse Withstand Voltage	8 kV
Ie, Rated Operational Current, AC-21a, 400V	200 A@400V
Ie, Rated Operational Current, AC-21a, 690V	200 A@690V
Ie, Rated Operational Current, AC-22a, 690V	125 A@690V
Ie, Rated Operational Current, AC-23a, 400V	160 A@400V
Ie, Rated Operational Current, AC-23a, 690V	63 A@690V
Ie, Rated Operational Current, DC-21a, 220V	200 A@220V
Standards Compliance	IEC 60947-3 IEC 60947-6-1
Ie, Rated Operational Current, DC-21a, 440V	125 A@440V
Ie, Rated Operational Current, DC-22a, 220V	200 A@220V
Ie, Rated Operational Current, DC-22a, 440V	125 A@440V
Ie, Rated Operational Current, DC-23a, 220V	125 A@220V
Ie, Rated Operational Current, DC-23a, 440V	125 A@440V
kW Rating, AC-23a, 415V, 3ph	100 kW @415V
kW Rating, AC 23b, 415V, 3ph	100 kW
kW Rating, AC-23a, 400V, 3ph	80 kW @400V
Current, Fuse-Protected Short-Circuit Capacity, 400V	50 kA
Busbar Width, Max	25 mm, max
Mechanical Service Life	10000 cycles
Depth	265 mm
Weight	4.1 kg
Height	135 mm
Cable Cross Section (Min)	50 mm <sup>2</sup>

# Catalogue No: **SCO2004PSTD**

## SCO KIT 200A 4P STD (I-0-II) 41AC4020

Power Distribution and Protection > Isolators and Transfer Switches > Transfer Switches > Socomec Manual Transfer Switches > SCO Manual Transfer Switch > SCO 4 Pole Changeover Kits with External Handle



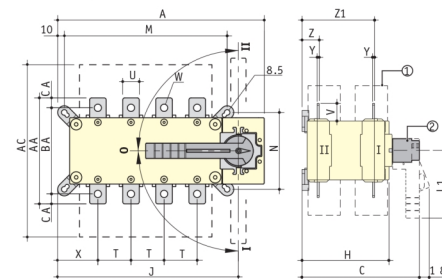
Cable Cross Section (Max)	120 mm <sup>2</sup>
Width	211 mm
Ie, Rated Operational Current, AC-23a, 415V	200 A@415V
Icw, short time withstand current, 1s (rms)	7 kA for 1s
Ie, Rated Operational Current, AC-21a, 415V	200 A@415V

### REFERENCES

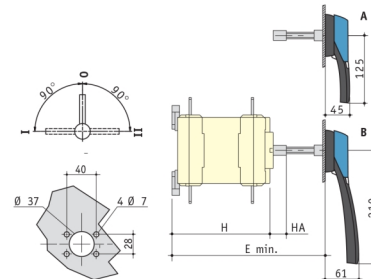
IECEx Certificate	-
Supplier Declaration of Conformity:	-
Installation Guide:	-
User Manual:	-
Manufacturer Datasheet:	-
Manufacturer Catalogue & Product Selection:	-

### SIRCOVER 125 to 1600 A

Direct front operation



External front operation



- A. External operation handle S2 type: 125 to 630 A
- B. External operation handle S3 type: 800 to 1600 A

- ① Terminal shrouds
- ② Direct operation handle:
  - 125 to 630 A: L1 = 140 mm.
  - 800 to 1600 A: L1 = 210 mm.

Rating (A)	Overall dimensions (mm)				Terminal shrouds		Switch body				Switch mounting				Connection terminals											
	A 3p	A 4p	C	E min.	AC	H	HA	J 3p	J 4p	M 3p	M 4p	N	T	U	V	W	X 3p	X 4p	Y	Z	Z1	AA	BA	CA		
125	221	251	218	210	235	148	25	182	212	156	186	101	36	20	25	8.5	56	50	3.5	28	124	135	115	10		
160	221	251	218	210	235	148	25	182	212	156	186	101	36	20	25	8.5	56	50	3.5	28	124	135	115	10		
200	221	251	218	210	235	148	25	182	212	156	186	101	36	20	25	8.5	56	50	3.5	28	124	135	115	10		
250	262	312	218	210	280	148	25	223	273	196	246	116	50	25	30	11	61	61	3.5	30	124	160	130	10		
400	262	312	218	210	280	148	25	223	273	196	246	116	50	35	35	11	61	61	3.5	30	124	170	140	15		
500	319	379	295	280	400	225	25	272	332	246	306	176	65	32	37	13	70.5	65.5	5	43	180	235	205	15		
630	319	379	295	280	400	225	25	272	332	246	306	176	65	45	50	13	70.5	65.5	5	43	180	260	220	20		
800	386	466	375	425	459	298	29	306.5	386.5	336	336	250	80	50	60.5	15	48	48	7	66.5	253.5	321		26.5		
1250	386	466	375	425	459	298	29	306.5	386.5	336	336	250	80	60	65	16x11	48	48	7	66.5	255.5	330		29.5		
1600	478	598	375	425	461	298	29	388.5	518.5	347	467	250	120	90	43.5	12.5x5	54	54	8	66.5	255.5	288		15		

Dimension Diagram