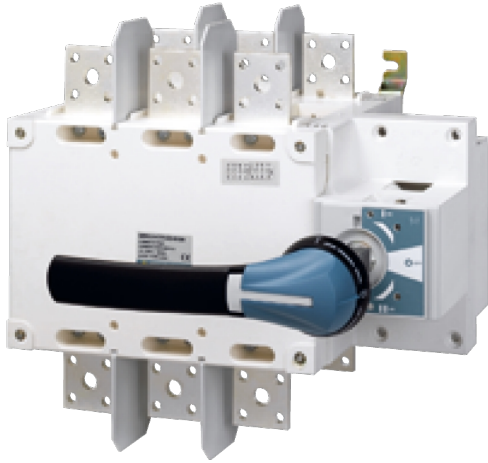


Catalogue No: **SCO2003PSTD**

SCO KIT 200A 3P STD (I-O-II) 41AC3020

Power Distribution and Protection > Isolators and Transfer Switches > Transfer Switches > Socomec Manual Transfer Switches > SCO Manual Transfer Switch > SCO 3 Pole Changeover Kits with External Handle and Shaft

KIT - 200A 3 pole changeover switch Includes Handle and Shaft



Representative Photo Only
(actual product may vary based on configuration selections)

- Standard (I-O-II) and make before break (I-I&II-II) options available covering any application requirement
- Three stable positions (I-O-II) not affected by voltage drops or vibrations ensuring the connected load is protected against possible network interference
- Easy connections thanks to copper bar connection kit accessory for 2000 to 3200A switches enabling the use of flat or edgewise connection with top or bottom bridging.
- Compatibility with the ergonomic IP65 S-Type Handles which features interlocking (in the ON position), padlocking, UV and chemical agent resistive material and the choice of standard blue or red / yellow colour

SPECIFICATIONS

Component Type Power Distribution & Protection	Manual Changeover Switch
Number of Poles	3
Ie, Rated Operational Current, AC-31b, 415V	200 A@415V
Ui, Rated Insulation Voltage	800 V (rms)
Uimp, Impulse Withstand Voltage	8 kV
Ie, Rated Operational Current, AC-21a, 400V	200 A@400V
Ie, Rated Operational Current, AC-21a, 690V	200 A@690V
Ie, Rated Operational Current, AC-22a, 690V	125 A@690V
Ie, Rated Operational Current, AC-23a, 400V	160 A@400V
Ie, Rated Operational Current, AC-23a, 690V	63 A@690V
Ie, Rated Operational Current, DC-21a, 220V	200 A@220V
Standards Compliance	IEC 60947-3 IEC 60947-6-1
Ie, Rated Operational Current, DC-21a, 440V	125 A@440V
Ie, Rated Operational Current, DC-22a, 220V	200 A@220V
Ie, Rated Operational Current, DC-22a, 440V	125 A@440V
Ie, Rated Operational Current, DC-23a, 220V	125 A@220V
Ie, Rated Operational Current, DC-23a, 440V	125 A@440V
kW Rating, AC-23a, 415V, 3ph	100 kW @415V
kW Rating, AC 23b, 415V, 3ph	100 kW
kW Rating, AC-23a, 400V, 3ph	80 kW @400V
Current, Fuse-Protected Short-Circuit Capacity, 400V	50 kA
Busbar Width, Max	25 mm, max
Mechanical Service Life	10000 cycles
Depth	265 mm
Weight	2.9 kg
Height	135 mm
Cable Cross Section (Min)	70 mm ²

Catalogue No: **SCO2003PSTD**

SCO KIT 200A 3P STD (I-0-II) 41AC3020

Power Distribution and Protection > Isolators and Transfer Switches > Transfer Switches > Socomec Manual Transfer Switches > SCO Manual Transfer Switch > SCO 3 Pole Changeover Kits with External Handle and Shaft



Cable Cross Section (Max)	120 mm ²
Width	211 mm
Ie, Rated Operational Current, AC-23a, 415V	200 A@415V
Icw, short time withstand current, 1s (rms)	7 kA for 1s
Ie, Rated Operational Current, AC-21a, 415V	200 A@415V

REFERENCES

IECEX Certificate	-
Supplier Declaration of Conformity:	-
Installation Guide:	-
User Manual:	-
Manufacturer Datasheet:	-
Manufacturer Catalogue & Product Selection:	-