

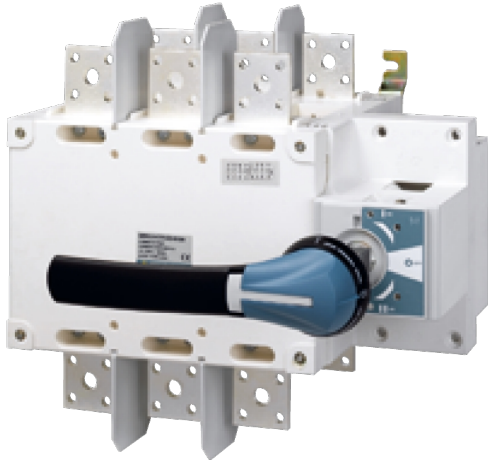
Catalogue No: **SCO4003PSTD**

SCO KIT 400A 3P STD (I-O-II) 41AC3040

Power Distribution and Protection > Isolators and Transfer Switches > Transfer Switches > Socomec Manual Transfer Switches > SCO Manual Transfer Switch > SCO 3 Pole Changeover Kits with External Handle and Shaft



KIT - 400A 3 pole changeover switch Includes Handle and Shaft



Representative Photo Only
(actual product may vary based on configuration selections)

- Standard (I-O-II) and make before break (I-I&II-II) options available covering any application requirement
- Three stable positions (I-O-II) not affected by voltage drops or vibrations ensuring the connected load is protected against possible network interference
- Easy connections thanks to copper bar connection kit accessory for 2000 to 3200A switches enabling the use of flat or edgewise connection with top or bottom bridging.
- Compatibility with the ergonomic IP65 S-Type Handles which features interlocking (in the ON position), padlocking, UV and chemical agent resistive material and the choice of standard blue or red / yellow colour

SPECIFICATIONS

Component Type Power Distribution & Protection	Manual Changeover Switch
Number of Poles	3
Ie, Rated Operational Current, AC-31b, 415V	400 A@415V
Ui, Rated Insulation Voltage	1000 V (rms)
Uimp, Impulse Withstand Voltage	12 kV
Ie, Rated Operational Current, AC-21a, 400V	400 A@400V
Ie, Rated Operational Current, AC-21a, 690V	200 A@690V
Ie, Rated Operational Current, AC-22a, 690V	160 A@690V
Ie, Rated Operational Current, AC-23a, 400V	250 A@400V
Ie, Rated Operational Current, AC-23a, 690V	125 A@690V
Ie, Rated Operational Current, DC-21a, 220V	250 A@220V
Standards Compliance	IEC 60947-3 IEC 60947-6-1
Ie, Rated Operational Current, DC-21a, 440V	200 A@440V
Ie, Rated Operational Current, DC-22a, 220V	250 A@220V
Ie, Rated Operational Current, DC-22a, 440V	200 A@440V
Ie, Rated Operational Current, DC-23a, 220V	200 A@220V
Ie, Rated Operational Current, DC-23a, 440V	200 A@440V
kW Rating, AC-23a, 415V, 3ph	190 kW @415V
kW Rating, AC 23b, 415V, 3ph	190 kW
kW Rating, AC-23a, 400V, 3ph	280 kW @400V
Current, Fuse-Protected Short-Circuit Capacity, 400V	50 kA
Busbar Width, Max	32 mm, max
Mechanical Service Life	10000 cycles
Depth	135 mm
Weight	3.9 kg
Height	170 mm
Cable Cross Section (Min)	185 mm ²

Catalogue No: **SCO4003PSTD**

SCO KIT 400A 3P STD (I-0-II) 41AC3040

Power Distribution and Protection > Isolators and Transfer Switches > Transfer Switches > Socomec Manual Transfer Switches > SCO Manual Transfer Switch > SCO 3 Pole Changeover Kits with External Handle and Shaft



Cable Cross Section (Max)	240 mm ²
Width	262 mm
Ie, Rated Operational Current, AC-23a, 415V	400 A@415V
Icw, short time withstand current, 1s (rms)	8 kA for 1s
Ie, Rated Operational Current, AC-21a, 415V	400 A@415V

REFERENCES

IECEx Certificate	-
Supplier Declaration of Conformity:	-
Installation Guide:	-
User Manual:	-
Manufacturer Datasheet:	-
Manufacturer Catalogue & Product Selection:	-