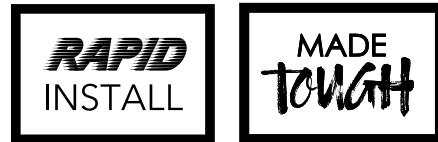


IDV

INTERNAL DUCT VALVE

IDVSS

INTERNAL DUCT VALVE

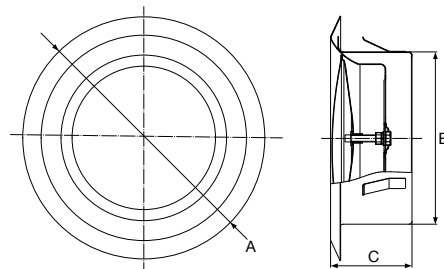
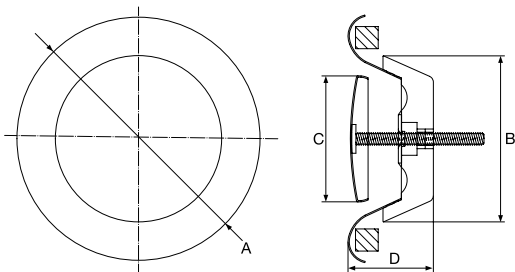


The IDV is constructed from high quality steel with a white finish. The valve body is equipped with a mounting ring for ease of installation. Air flow can be easily adjusted by rotating the control disc.

The IDVSS is constructed with high quality 304 stainless steel to minimise the risk of rust. The valve body is equipped with a mounting ring for ease of installation. It can be used for both return and supply air with air flow easily adjusted by rotating the control disc.

- Manufactured from high quality steel with a white finish.
- Stylish design.
- Adjustable air flow.
- Quick & easy installation.
- Includes mounting ring.

- Constructed with 304 quality stainless steel.
- Stylish design.
- For both return & supply air.
- Quick & easy installation.
- Includes mounting ring.



MODEL NO.	AØ	DUCT DIAMETER BØ	C	D
IDV100	140	100	74	39
IDV150	201	150	120	51

MODEL NO.	AØ	DUCT DIAMETER BØ	C
IDVSS100	140	100	58
IDVSS125	172	125	58
IDVSS150	217	150	70

All dimensions in mm

All dimensions in mm