



### Main

Range of product	Modicon M171/M172
Product or component type	Communication module
Communication port protocol	LonWorks

### Complementary

Integrated connection type	LON wire crimp - twisted pair
Transmission rate	78 kbits/s
Adjustment	Pitch 3.81 mm
Electrical connection	Removable screw terminal block
Physical interface	90° insertion - 2.5 mm <sup>2</sup> cable
Supply	Via base board M171P/M172P
Local signalling	1 LED red service 1 LED green status
Product compatibility	Logic controller M171 performance Logic controller M172 performance
Product weight	0.077 kg

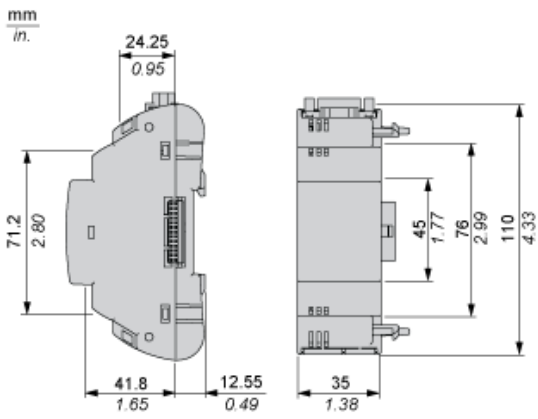
### Environment

product certifications	CE CSA (pending) EAC (pending) CURus (pending)
marking	CE
IP degree of protection	IP20
ambient air temperature for operation	-10...55 °C
ambient air temperature for storage	-20...85 °C
relative humidity	10...90 % without condensation

### Offer Sustainability

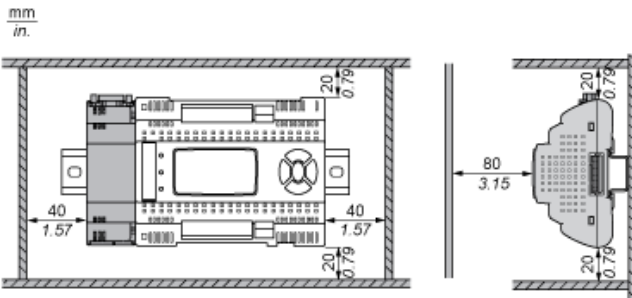
Sustainable offer status	Not Green Premium product
RoHS (date code: YYWW)	Compliant - since 1530 - Schneider Electric declaration of conformity
REACH	Reference not containing SVHC above the threshold

### Dimensions

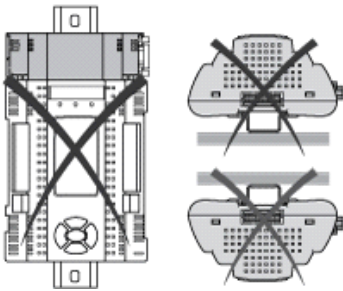


## Mounting and Clearance

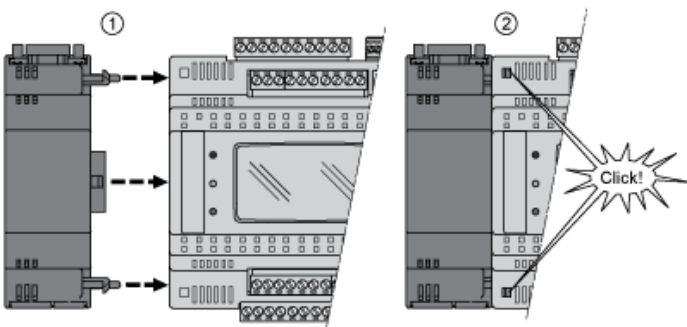
### Clearance



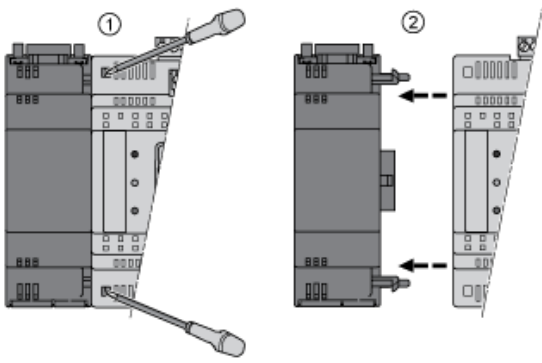
### Misplacement



### Mounting on Controller



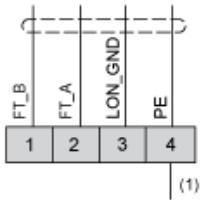
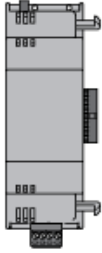
### Dismounting



## Connections and Schema

### LonWorks Communication Module

TM171ALON



(1) PE to be connected externally to the protective earth.