



Main

Range of product	Modicon M171
Product or component type	Communication module
Communication port protocol	Profibus

Complementary

Integrated connection type	Profibus DP DB9 - shielded RS232 cable
Supply	Via base board EVD/EVC
Product compatibility	Logic controller M171 performance
Product weight	0.077 kg

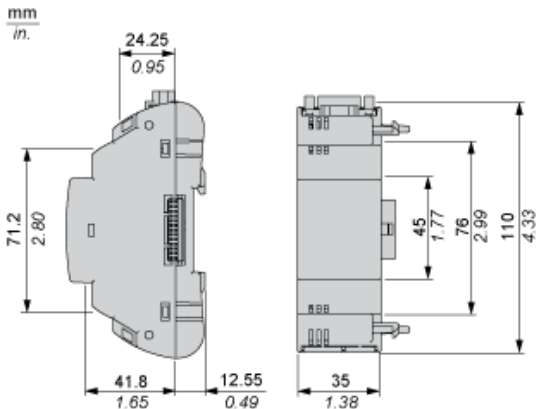
Environment

product certifications	CE CSA CURus EAC
marking	CE
IP degree of protection	IP20
ambient air temperature for operation	-10...55 °C
ambient air temperature for storage	-20...85 °C
relative humidity	10...90 % without condensation

Offer Sustainability

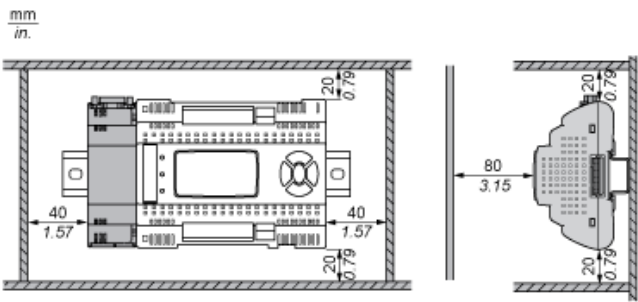
Sustainable offer status	Not Green Premium product
RoHS (date code: YYWW)	Compliant - since 1429 - Schneider Electric declaration of conformity
REACH	Reference not containing SVHC above the threshold

Dimensions

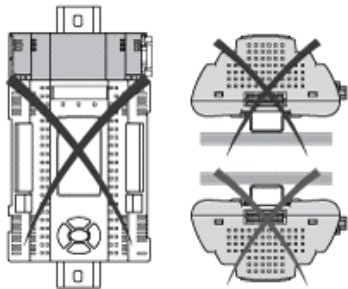


Mounting and Clearance

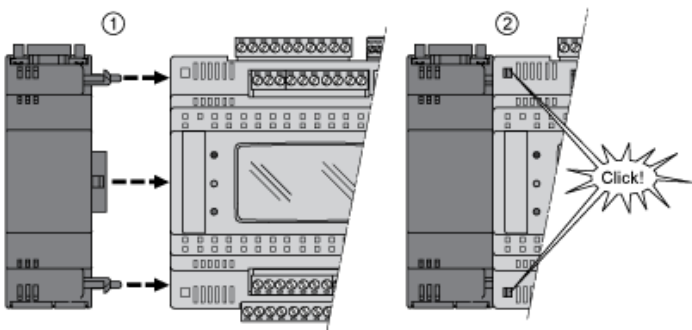
Clearance



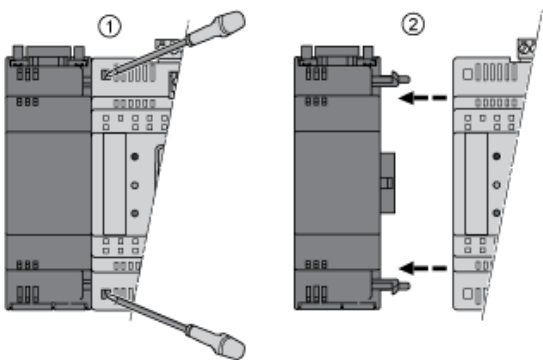
Misplacement



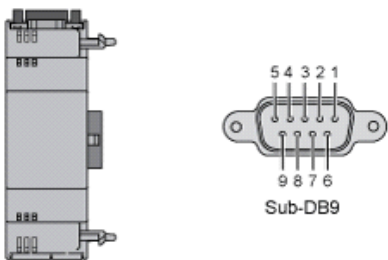
Mounting on Controller



Dismounting



Profibus port (Profibus DP)



N°	Profibus
1	Shield
2	Output ground 24 V
3	RXD-TXD +
4	Repeater Control Signal TRS
5	Ground 0 V
6	5 V
7	24 V
8	RXD-TXD-
9	Control Signal direction

*Shield: To be connected externally to the protective earth