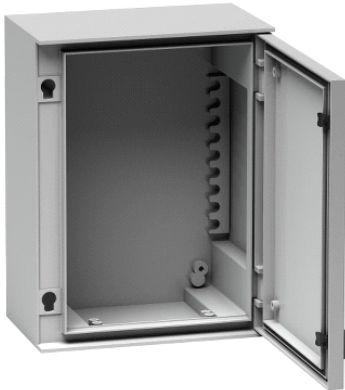


NSYPLM86G

wall-mounting enclosure polyester monobloc IP66
H847xW636xD300mm



Main

Range	Thalassa
Product name	Thalassa PLM
Device short name	PLM
Device application	Multi-purpose
Product or component type	Compact enclosure
Enclosure nominal height	847 mm
Enclosure nominal width	636 mm
Enclosure nominal depth	300 mm
Enclosure mounting	Wall mounted
Device composition	Lock 2 Door 1 Body 1
Body type	One piece moulded with notches in the rear Built-in canopy
Door type	Plain
Lock type	3 mm double-bar lock

Complementary

Number of locks	2
Mounting plate description	Without mounting plate
Accessibility for operation	Front
Removable parts	Door by hinges
Material	Polyester reinforced with fibreglass
Colour	Grey RAL 7035
Standards	IEC 62208 NEMA classification 13 NEMA classification 4X
Product certifications	UL

Environment

IP degree of protection	IP66 IEC 60529
IK degree of protection	IK10 IEC 62262
fire resistance	960 °C IEC 62208
ambient air temperature for storage	-35...90 °C

Offer Sustainability

Sustainable offer status	Green Premium product
RoHS (date code: YYWW)	Compliant - since 1511 - Schneider Electric declaration of conformity
REACH	Reference not containing SVHC above the threshold
Product environmental profile	Available
Product end of life instructions	Need no specific recycling operations

The information provided in this documentation contains general descriptions and/or technical characteristics of the performance of the products contained herein. This documentation is not intended as a substitute for and is not to be used for determining suitability or reliability of these products for specific user applications. It is the duty of any such user or integrator to perform the appropriate and complete risk analysis, evaluation and testing of the products with respect to the relevant specific application or use thereof. Neither Schneider Electric Industries SAS nor any of its affiliates or subsidiaries shall be responsible or liable for misuse of the information contained herein.