



## EXTERNAL EAVE GRILLE

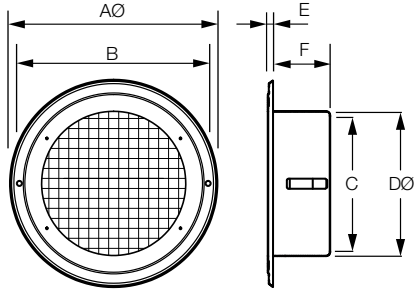
**MADE TOUGH**

**316 GRADE STAINLESS STEEL**



The Under Eave Vent EEVSS is made from high quality 316 grade stainless steel, and has been designed for general air intake or exhaust applications. It is fitted with a sturdy wire mesh that prevents pests from entering.

- Flush mounting ideal for under-eave venting.
- Can be used for air intake or exhaust.
- Wire mesh face allows it to be used for wall or ceiling mounting also.
- Made from high quality 316 marine grade Stainless Steel.
- Cinder Mesh insert for compliance with Bushfire Attack Level BAL -40.
- Mounting gasket forms an air-tight seal.



MODEL NO.	A	B	C	D	E	F
EEVSS100	143	130	86	96	4	50
EEVSS150	206	189	135	145	4	58

All dimensions in mm



## DOME VENT EXTERNAL GRILLE

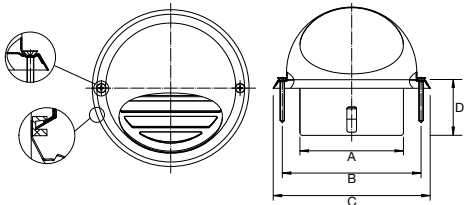
**MADE TOUGH**

**304 GRADE STAINLESS STEEL**



The stainless steel Dome Vent is designed for external wall mounting. It is suitable for areas with harsh weather and the mesh screen prevents pests and insects from entering.

- Ideal for extreme weather conditions.
- High quality 304 stainless steel.
- Includes mounting gasket for an air tight seal.
- Cinder mesh with a 2mm aperture to comply with Bushfire Attack Level BAL-40.



MODEL NO.	DUCT DIAMETER AØ	B	C	D
EDVSS100	100	130	147	50
EDVSS125	125	165	187	50
EDVSS150	150	189	210	60

All dimensions in mm



## HOOD VENT EXTERNAL GRILLE

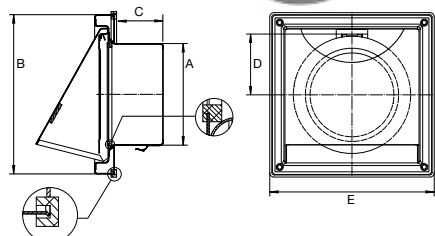
**MADE TOUGH**

**304 GRADE STAINLESS STEEL**



The Hood Vent is made from high quality 304 stainless steel and has a gravity backdraft shutter that prevents cold air flowing back into the room. The valve body is equipped with a mounting gasket that forms an air tight seal.

- Ideal for extreme weather conditions.
- Includes gravity backdraft shutter.
- Cinder mesh with a 2mm aperture to comply with Bushfire Attack Level BAL-40.



MODEL NO.	DUCT DIAMETER AØ	B	C	D	E
EHVSS100	100	156	50	58	156
EHVSS125	125	180	50	66	184
EHVSS150	150	181	58	78	184

All dimensions in mm