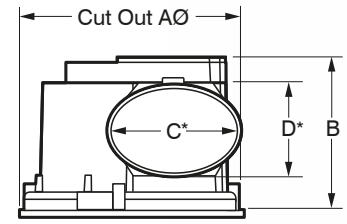


# Fan Body

## Dimensional Data

| Model Number | Dimensions, mm |     |                    |                    | App Weight (kg) |
|--------------|----------------|-----|--------------------|--------------------|-----------------|
|              | Cut Out AØ     | B   | C*                 | D*                 |                 |
| RESPF8       | 250            | 195 | 94 (100mm spigot)  | 105 (100mm spigot) | 2               |
| RESPF8-T     |                |     | 170 (150mm spigot) | 120 (150mm spigot) |                 |
| RESPF150     | 290            | 197 | 170                | 120                | 3               |
| RESPF150T    |                |     |                    |                    |                 |



\*RESPF8 comes with spigot to suit both 100mm and 150mm duct.

RESPF150 comes with spigot to suit 150mm duct only.

## Technical Data

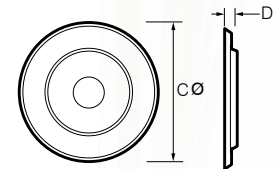
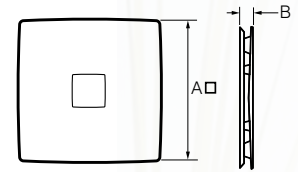
| Model Number | Run-on timer | Air flow <sup>#</sup> |       | Fan Speed rev/sec | Average Sound Level dB(A) @ 3m | Watts | Volts |
|--------------|--------------|-----------------------|-------|-------------------|--------------------------------|-------|-------|
|              |              | m <sup>3</sup> /hr    | L/sec |                   |                                |       |       |
| RESPF8       | No           | 216                   | 60    | 18                | 29                             | 30    | 240   |
| RESPF8-T     | Yes          |                       |       |                   |                                |       |       |
| RESPF150     | No           | 349                   | 97    | 18                | 37                             | 60    | 240   |
| RESPF150T    | Yes          |                       |       |                   |                                |       |       |

<sup>#</sup> Air flow without duct and fittings

# Grilles

## Dimensional Data

|            | Model Number     | Description                                   | Dimensions, mm |    |     |    |
|------------|------------------|---|----------------|----|-----|----|
|            |                  |   | A□             | B  | CØ  | D  |
| 8" Grille  | RESPG8-SQWH      | 8" Square Grille White Finish                 | 300            | 28 | -   | -  |
|            | RESPG8-SQWH-LED  | 8" Square Grille White Finish with LED Light  | 300            | 28 | -   | -  |
|            | RESPG8-RNWH      | 8" Round Grille White Finish                  | -              | -  | 294 | 19 |
|            | RESPG8-RNWH-LED  | 8" Round Grille White Finish with LED Light   | -              | -  | 294 | 19 |
| 10" Grille | RESPG150SQWH     | 10" Square Grille White Finish                | 353            | 30 | -   | -  |
|            | RESPG150SQBK     | 10" Square Grille Black Finish                | 353            | 30 | -   | -  |
|            | RESPG150SQWH-LED | 10" Square Grille White Finish with LED Light | 353            | 30 | -   | -  |
|            | RESPG150RNWH     | 10" Round Grille White Finish                 | -              | -  | 332 | 24 |
|            | RESPG150RNBK     | 10" Round Grille Black Finish                 | -              | -  | 332 | 24 |
|            | RESPG150RNWH-LED | 10" Round Grille White Finish with LED Light  | -              | -  | 332 | 24 |



## LED Grilles Specifications

| Model Number     | Lumens (LM) | Input power (W) | Colour Temp (K) | Beam Angle (°C) |
|------------------|-------------|-----------------|-----------------|-----------------|
| RESPG8-SQWH-LED  | 1000        | 12              | 4200            | 180             |
| RESPG8-RNWH-LED  | 800         | 9               | 4200            | 180             |
| RESPG150SQWH-LED | 1000        | 12              | 4200            | 180             |
| RESPG150RNWH-LED | 800         | 9               | 4200            | 180             |



Scan the QR Code for more information



### Fantech Pty. Ltd.

Victoria: (+61 3) 9554 7845  
 New South Wales: (02) 8811 0400  
 South Australia: (08) 8294 0530  
 Northern Territory: (08) 8947 0447  
 Queensland: (07) 3299 9888  
 Western Australia: (08) 9209 4999  
 A.C.T.: (02) 6280 5511  
 New Zealand: (09) 444 6266

[www.fantech.com.au](http://www.fantech.com.au) |

For sales enquiries contact:

Specifications and design subject to change without notice.