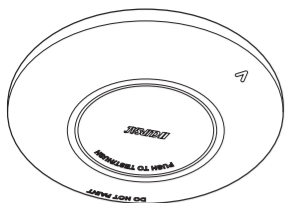


FIRETEK® Smoke alarm

755LPSMA4

Lithium Battery Powered Photoelectric Smoke Alarm with Wireless Interconnect



CLIPSAL
by Schneider Electric

More information is available

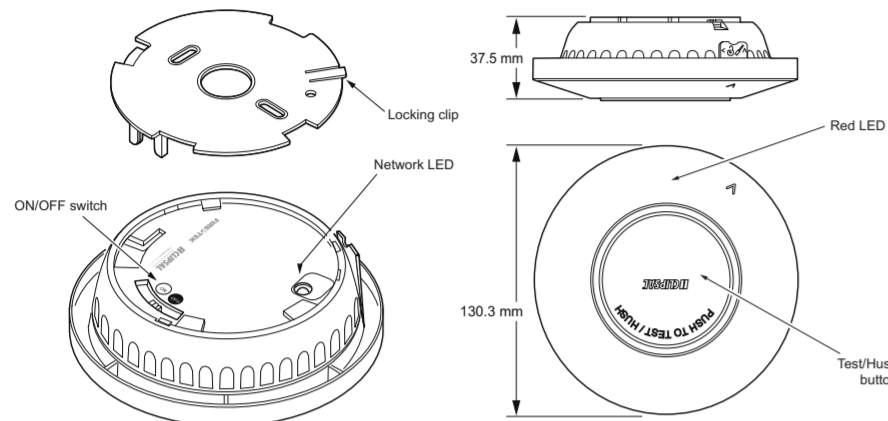


<https://updates.clipsal.com/ClipsalOnline/Files/Brochures/W0001710.pdf>

Scan the QR code for more information about your Clipsal smoke alarm:

- What smoke alarms can and cannot do
- Developing and practising a plan of escape
- What to do if an alarm sounds.

Operating elements



Installation location

Install more than 1 m away from air conditioner/heater vents and fans, electrical sources, appliances and fittings.

>1 m:



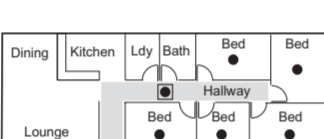
Example: Class 1a building

- Smoke alarm
- Recommended additional alarms (or as required by legislation)



Example: Class 1b building

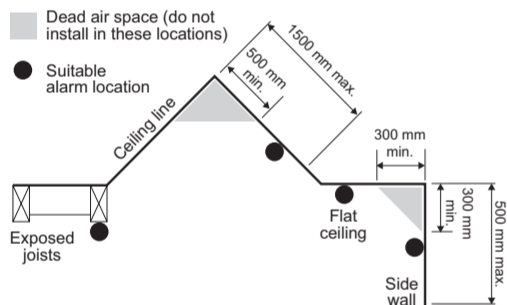
- Smoke alarm
- Recommended additional alarms (or as required by legislation)
- Smoke alarm with evacuation lighting



Do not install in garages, kitchens, bathrooms or any area with high levels of moisture, dirt or insects.



For garages: A heat alarm is more suitable as it is not affected by particulates.

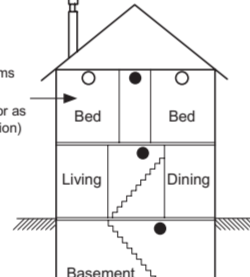


Dead air space (do not install in these locations)

● Suitable alarm location

Stores with bedrooms:

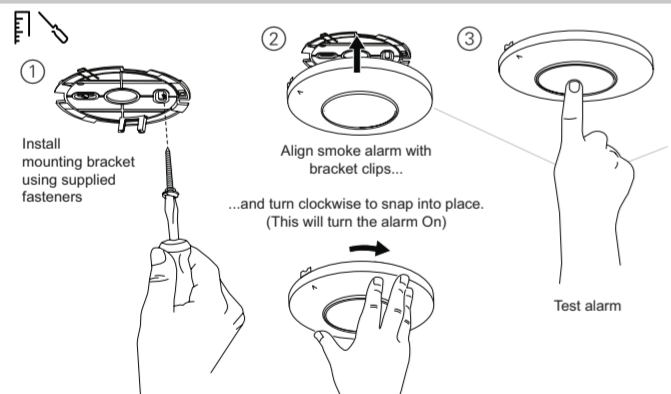
- Alarm in hallway connecting bedrooms
- Recommended additional alarms (or as required by legislation)



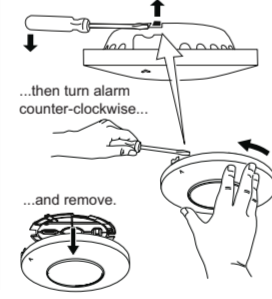
Stores with no bedrooms:

- Alarms located in the area of the stairway.

Installation



Removing alarm from bracket
Use a flat-bladed screwdriver to press and hold locking clip upwards...



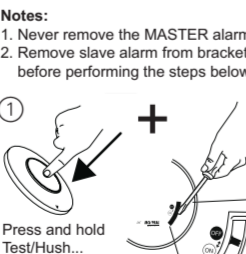
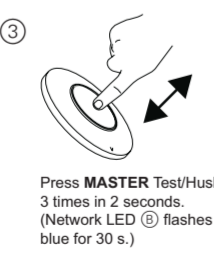
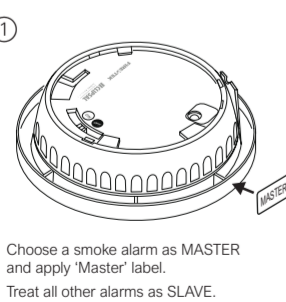
Interconnected alarms (do this before mounting alarms)

Preparing the MASTER alarm

Adding SLAVE alarms

Removing SLAVE alarms

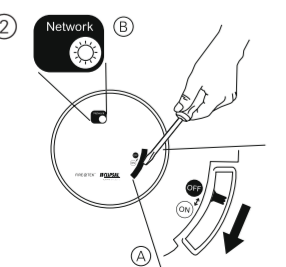
Notes:
1. Never remove the MASTER alarm.
2. Remove slave alarm from bracket before performing the steps below.



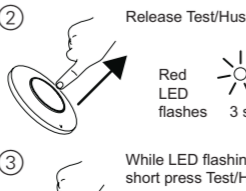
Choose a smoke alarm as MASTER and apply 'Master' label. Treat all other alarms as SLAVE.

Press **MASTER** Test/Hush 3 times in 2 seconds. (Network LED flashes blue for 30 s.)

Note: Keep holding Test/Hush until red LED stops flashing.



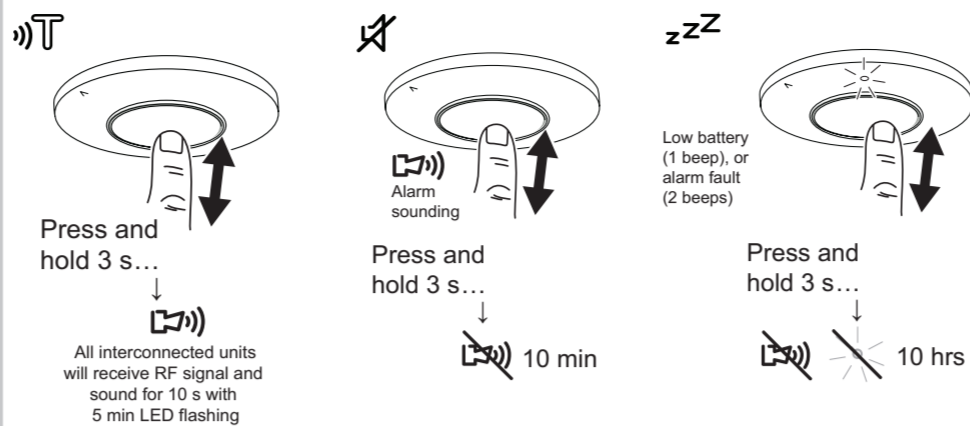
Press **SLAVE** Test/Hush 3 times in 2 seconds while **MASTER** blue LED is On. Network LED flashes red or green for 3 seconds. Then, both Master and Slave Network LEDs flash green for a further 3 seconds indicating successful interconnection.



Use a flat-bladed screwdriver to carefully switch Master and all Slave alarms ON. **Note:** Take care when inserting screwdriver.

Repeat step 4 on all SLAVE alarms. Test on one unit after MASTER network LED has turned off. Refer to *Testing the smoke alarm*.

Operating the smoke alarm



General information

- Leave these instructions with the occupant, to be retained for the life of the alarm.
- It is recommended that this smoke alarm be installed by a licenced electrician.
- Do not remove dust cover until 24 hours after all construction has been completed. Construction dust and chemicals can cause contamination and false alarms.
- **Important:** Dust cover must be removed before smoke alarm will operate correctly.

For your safety

CAUTION

EQUIPMENT INSTALLATION HAZARD

- This product must only be used for the purpose described in these instructions and must be installed in accordance with the wiring rules and regulations in that location.
- Ensure the product has been correctly installed and tested for safe operation.
- Only install indoors.
- The 755LPSMA4 is wirelessly compatible with wireless base 755RFB2.
- **The 755LPSMA4 is NOT compatible with wireless base 755RFB.**
- Check the function and wireless interconnection on each smoke alarm.
- Test each wireless interconnected unit 1 by 1. Press and hold the Test button until second burst of 3 beeps has finished. If any unit fails to alarm, check all wireless connections.
- Press and hold the Test/Hush button on one smoke alarm until it sounds, then check that the red LED is flashing on all interconnected smoke alarms.

Failure to follow these instructions may result in injury or equipment damage.

Operating elements

- Network LED (wireless pairing indication: yellow/blue and green: master and slave pairing modes).
- Red LED (low battery, alarm, test and hush indicator). The LED is located within the smoke alarm casing and is visible when On.

Choosing the installation location

NOTICE

EQUIPMENT INSTALLATION COMPLIANCE

This smoke alarm must be installed in accordance with the National Construction Code and any local state legislation requirements.

Failure to follow these instructions may result in a non-compliant installation.

- Prior to installing, ensure there are no obstructions in ceiling mounting locations, such as pipes or cables.

Installing the smoke alarm

- Only install smoke alarm indoors in a stand-alone or wireless interconnected set up (see *Interconnected alarms*).
- Set up wireless interconnection before installing the alarms (see *Interconnected alarms*).
- Do not remove the dust cover until you are ready to test the unit. See *Testing the smoke alarm*.

Interconnecting smoke alarms

⇒ (see *Interconnected alarms*)

Wireless interconnection on the 755LPSMA4 smoke alarm is designed for easy installation and no wiring is required. An optional wireless base (Catalogue No. 755RFB2) can be purchased separately to wirelessly interconnect with Gen 2 and Gen 4 surface mount mains powered Clipsal smoke alarms.

- Always test alarm system operation after interconnected smoke alarms are added or removed.

NOTICE

EQUIPMENT INSTALLATION HAZARD

- Maximum of 40 interconnected smoke alarms.
- Only Clipsal 755LPSMA4 smoke alarms and Clipsal smoke alarms connected to the 755RFB2 base are compatible for interconnection with this alarm.

Failure to follow these instructions may result in injury or equipment damage.

Mounting the smoke alarm



Operating the smoke alarm

Testing the smoke alarm



CAUTION

DO NOT USE OPEN FLAME

Never use an open flame of any type to test your alarm. **Failure to follow this instruction may result in injury or equipment damage.**

- **Test the smoke alarm once per month to ensure proper operation.**
- Press the Test/Hush button on each alarm for three seconds until the alarm sounds. If no alarm sounds, there is a defective battery or other failure. Refer to *Troubleshooting*.
- If the smoke alarm is installed in a mobile home, test weekly and before every journey.
- Check that all interconnected smoke alarms operate during the test.

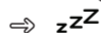
Testing interconnected smoke alarms

- The smoke alarm will send out a wireless signal once the Test/Hush button is released. All interconnected alarms will sound for 10 seconds and flash the front red LED twice a second for 5 minutes. If this does not happen, check the wireless interconnection setup and that the distance between alarms is within the specification.
- After the first alarm has been tested, briefly press the Test/Hush button on the next interconnected alarm to stop the flashing Red LED, then press and hold the Test/Hush button again until the alarm sounds. Repeat this on all alarms.

Silencing the smoke alarm (Hush feature)

- When the Test/Hush button is pressed during an alarm event, the smoke alarm is not sensitive to smoke for 10 minutes, after which the alarm resumes normal operation. During this hush time, the red LED flashes once every 8 seconds.
- To silence an unwanted alarm, press the Test/Hush button until the alarm sound stops.
- If more than one alarm is interconnected, identify the alarm with the red flashing LED, as this will be only alarm that can be hushed. All interconnected alarms will stop sounding within 5 to 10 seconds after the initial alarm is hushed.
- If more than one alarm has a flashing red LED and sounding, the Test/Hush button on all alarms will all need to be pressed.
- Wait 10 minutes before performing any additional testing to avoid any abnormal alarm responses.

Snoozing smoke alarm alerts



Low battery

- When the backup battery gets low, the red LED flashes once every 40 seconds, together with a beep sound. You can snooze the low battery indication for 10 hours by pressing the Test/Hush button for 3 seconds.

Alarm fault

- When an alarm fault is detected 1 beep will sound every 40 seconds without LED flashing. You can snooze the alarm fault indication for 10 hours by pressing the Test/Hush button for 3 seconds.

LED and sound indications

Red LED/Sound

Operating mode	Red LED	Sound	Duration
Normal mode / Standby mode	1 flash every 40 s	OFF	—
ALARM MODE	Local alarm	1 flash every 1 s Continuous 3 beeps every 4 s	—
	Interconnected alarm	OFF	Continuous 2 beeps every 1 s
Test mode	1 flash every 1 s	3 beeps every 4 s	Until Test/Hush released
Wireless Interconnection Test	2 flashes every second	Continuous 2 beeps every 1 s	5 minutes for LED 10 seconds for alarm
Hush mode	1 flash every 8 s	OFF	10 min
Low battery mode	1 flash every 40 s	1 beep every 40 s	End of life: replace smoke alarm
Fault mode	OFF	1 beep every 40 s	Until fault has been cleared
SNOOZE MODE	Low battery	1 flash every 40 s	OFF
	Fault	OFF	OFF

Network LED

Operating mode	Network LED	Duration	
INTERCONNECT	Master alarm in pairing mode	Blue, flashing	30 s max. or until pairing successful
	Slave alarm in pairing mode (first time)	Red, flashing	3 s
	Slave alarm in pairing mode (previously paired)	Green, flashing	3 s
	Master and slave alarm pairing successful	Green, flashing	3 s
	Master alarm after pairing completed	Blue, flashing	30 s
	Slave alarm pairing unsuccessful	Green, flashing	30 s or more beyond pairing time

Troubleshooting

Problem	Resolution/Action
Smoke alarm does not sound when tested	<ol style="list-style-type: none"> 1. Make sure POWER is ON. Fit the smoke alarm on the bracket and turn the alarm body clockwise until a click is heard. 2. Press Test/Hush button until it sounds. Do not quick press. 3. If problem persists, refer to <i>Warranty</i> section, and replace smoke alarm. If out of warranty, replace with new smoke alarm.
Smoke alarm beeps and red LED flashing once every 40 seconds	Battery is in low voltage condition. Replace the smoke alarm.
Smoke alarm beeps once without red LED flashing	<ol style="list-style-type: none"> 1. Clean smoke alarm. Refer to <i>Maintenance, Repairs and Service</i>. 2. If problem persists refer to <i>Warranty</i> section, and replace smoke alarm. If out of warranty, replace with new smoke alarm.
Smoke alarm sounds unexpectedly when smoke or steam is present	<ol style="list-style-type: none"> 1. Identify the smoke alarm that has initiated the alarm indicated by a flashing red LED and sound warning of three beeps every second. 2. Press Test/Hush button on the smoke alarm to pause the alarm. Interconnected alarms will stop sounding in 5 to 10 seconds. 3. To clean smoke alarm refer to <i>Maintenance, Repairs and Service</i>. 4. Move smoke alarm to a new location and test.
Nuisance/false alarm (Smoke alarm sounds without any smoke present)	<ol style="list-style-type: none"> 1. Identify the smoke alarm that has initiated the alarm indicated by a flashing red LED and sound warning of three beeps every second. 2. Press Test/Hush button on the smoke alarm to pause the alarm. Interconnected alarms will stop sounding in 5 to 10 seconds. 3. Clean smoke alarm. Refer to <i>Maintenance, Repairs and Service</i>. 4. If problem persists refer to <i>Warranty</i> section, and replace smoke alarm. If out of warranty, replace this alarm only.

False Alarm

In the event of a false alarm in an interconnected group, it is important to identify the triggering alarm(s). These alarms may need to be cleaned, serviced or replaced if necessary.

When alarms are sounding without any smoke present:

- Identify which smoke alarm/s are being triggered – Look for the alarm/s with sound and red LED flashing.
- Unclick all identified smoke alarms, then all interconnected alarms will stop alarming in 1 minute.
- Clean smoke alarms in accordance with the *Maintenance, Repairs and Service* section.
- Re-install and test all the smoke alarms.

If all of the above fails, contact a licenced electrician for replacement.

Maintenance, Repairs and Service

Maintenance

It is recommended that the smoke alarm is inspected monthly to ensure it is free from dirt, dust and insects. The alarm can be vacuumed or brushed with a soft brush to remove dust, dirt or kitchen grease that has accumulated. Apply a small amount of insect surface spray to a cloth and wipe around alarm/s every 3–6 months to mitigate insect ingress.

ALWAYS TEST THE SMOKE ALARM AFTER CLEANING

Repairs and Service

NOTICE

EQUIPMENT MAINTENANCE INSTRUCTIONS

- Test this smoke alarm regularly to ensure the unit is functional and that the battery is in good condition.
- Replace the smoke alarm 10 years after date of manufacture.
- Do not open the smoke alarm casing or repair the smoke alarm yourself. There are no user-serviceable parts inside.

Failure to follow these instructions may result in equipment malfunction or failure.

Disposal

As the smoke alarm does not contain any radioactive material, disposal with normal rubbish is permitted in Australia and New Zealand.

Before disposal, move the battery disconnect switch to the disconnect position. This will prevent the low battery warning beep when the battery eventually discharges.

Technical data

Battery Life	10 years
Operating Current	≤70 mA
Sensing Type	Photoelectric. This alarm contains NO radioactive material.
Operating Temperature	0 °C to 45 °C
Ambient Humidity	5% to 95%
Interconnecting	Wireless, 40 alarms maximum
Transmit Frequency	433.42 MHz
RF Range	140 m free air, 50 m indoor line of sight
Wireless Response Time	Within 30 seconds
Horn Level	85 dB at three metres minimum
Mounting Type	Ceiling and wall mount only
Approvals	Activfire SAI Global RCM
Complies with	AS 3786 AS/NZS 60065

It is recommended to dispose of this device at an authorised electronic waste collection point. Professional recycling protects people and the environment against potential negative effects.

Trademarks and certifications

Schneider Electric acknowledges that the Australian Standard Certified Product logo is a trademark of SAI Global, and that the Activfire Certified logo is a trademark of CSIRO.



Warranty

We warrant this product to be free from defects in materials and workmanship for a period of 5 (five) years from the date of installation.

Customer care

If you have technical questions, please contact the Customer Care Centre in your country.

Australia

Schneider Electric (Australia) Pty Ltd
Customer Care Australia: 13 78 23
e: customercare.au@schneider-electric.com
www.schneider-electric.com.au

New Zealand

Schneider Electric (NZ) Ltd
After hours service: 0800 735 4357 (NZ only)
Customer Care NZ: 0800 652 999
e: sales@nz.schneider-electric.com
www.schneider-electric.com