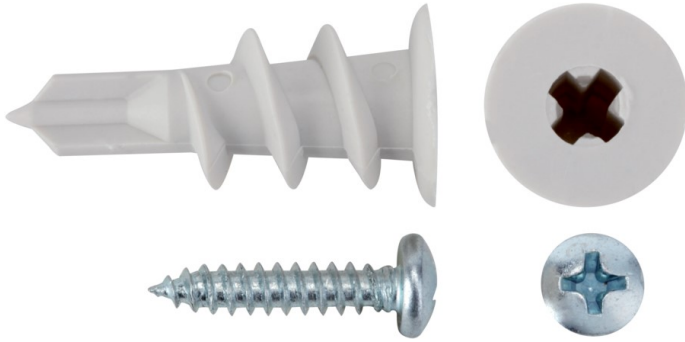


Nylon self drilling screw for plaster board Ø 15 x 32 mm (x 100)



Characteristics

Ø (mm) : **15**
 Length (mm) : **32**
 12 mm plasterboard tensile load (daN*) : **10**
 12 mm plasterboard shear load (daN*) : **25**
 Quantity : **100**
 Selling unit : **Jar**

Materials

☑ Plasterboard

Benefits

- Self drilling for time saving.
- No pre-drilling installation!
- Easy to remove and reinstall.

GENERAL INFORMATION

Description

Used in drywall and wallboard, plywood and pegboard.
 Perfect for curtains, lighting fixtures, fire alarms, shelving, wall decorations, etc.

Technical details

Nylon.
 Self-drilling plugs.
 Phillips® drive.

Instructions

1. Using a #2 Phillips® screwdriver, insert the anchor into the desired surface.
2. Turn clockwise until flush with surface and firmly in place (do not over-torque).
3. Place the object to fix, insert the screw in and turn clockwise until fastened correctly.

LOGISTIC INFORMATION

Packaging



Plastic box

Height (cm) : 13
 Length (cm) : 8.7
 Depth (cm) : 8.7
 Net weight (kg) : 0.36
 Gross weight (kg) : 0.43



Outer package 1



Carton box

Height (cm) : 14
 Length (cm) : 27.5
 Depth (cm) : 27.5
 Net weight (kg) : 3.24
 Gross weight (kg) : 4.12



Outer package 2



Pallet

Height (cm) : 113
 Length (cm) : 113
 Depth (cm) : 80
 Net weight (kg) : 181.44
 Gross weight (kg) : 250.5



x 504.00