

## Push-Button Dimmer with ControlLink

41EPBDWCLM-VW

### Wiser Iconic

Life is On



- 1 Follow the installation instructions
- 2 Download the Wiser Room App for your smartphone
- 3 Connect your smartphone to the dimmer
- 4 Configure the dimmer and save settings



Download the Wiser Room App to connect your smart phone or tablet to Clipsal Iconic BLE mechs.

### Load compatibility

	Dimmable LED	300 W
	Non-dimmable LED	Not compatible
	240 V Incandescent/Halogen	300 W
	LV halogen with electronic transformer	300 W
	LV halogen with iron-core transformer	300 W
	Dimmable compact fluorescent	300 W
	Non-dimmable compact fluorescent	Not compatible

### For your safety

#### ⚠️ DANGER

##### HAZARD OF ELECTRIC SHOCK, EXPLOSION, OR ARC FLASH

- This product must be installed and serviced by appropriately qualified and/or licenced electrical personnel.
- Isolate the electrical supply before doing any work on this product.
- Ensure that the product has been correctly installed and tested for safe operation before reconnecting the electrical supply.
- The Locking Bar on Iconic grids must be set to the Closed position to ensure that the mechanism cannot be removed during normal operation.
- There are no user serviceable parts inside the product.

Failure to follow these instructions will result in death or serious injury.

#### ⚠️ CAUTION

##### EQUIPMENT DAMAGE HAZARD

- Install the device according to instructions in this document.
- Pay attention to the specifications and wiring diagrams related to the installation.
- Do not use this product for any other purpose than specified in this instruction.
- Dropping the device may damage the mech. Check device operates after being dropped or if physical damage is shown.

Failure to follow these instructions can result in injury or equipment damage.

#### NOTICE

##### EQUIPMENT DAMAGE HAZARD (LOAD AND OPERATION)

- Operation of Iconic units at elevated temperatures or voltages outside of specification (240 V a.c. and 25 °C) may cause the over-temperature protection circuitry to operate. Operating with significant overload may cause the thermal fuse to blow and render the unit inoperable.
- Reduce the size of the connected load or use a different brand of lamp to prevent recurrence.
- Do not operate the product for prolonged periods in extreme conditions.

Failure to follow these instructions can result in equipment damage.

#### NOTICE

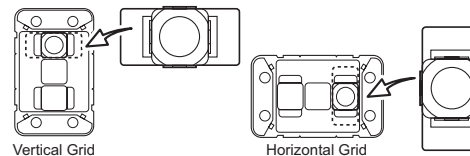
##### MAXIMUM LOAD RATINGS APPLY

Ensure that the number of Low Voltage Lighting Transformers connected to a single LED Push-Button Dimmer does not exceed the maximum load rating of the unit.

Failure to follow these instructions can result in equipment damage.

### Installation

#### Multi-gang orientation

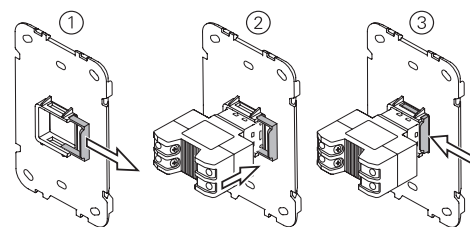


#### Multi-gang derating

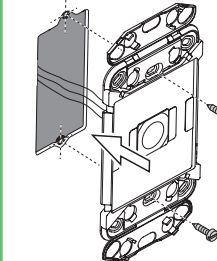
- 1 dimmer: max. load = 300 W
- 2 dimmers: max. load = 225 W per dimmer
- 3 dimmers: max. load = 150 W per dimmer

**Note:** When installing in a 3 gang plate, the middle mech must face opposite way.

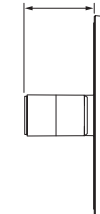
#### Fitting the mechanism to the grid



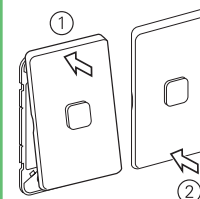
#### Mounting the grid



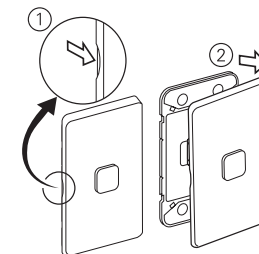
Wall box depth:  
min. 70 mm



#### Installing the skin

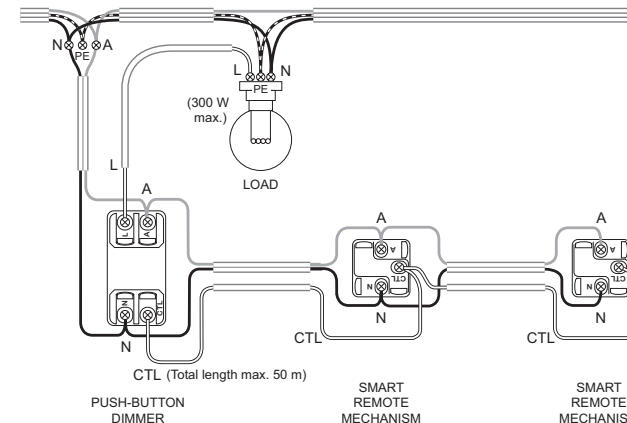


#### Removing the skin



#### Cabling and connections

(Typical 3-way dimmer installation using Wiser Iconic Push-Button Dimmer + 2 Smart Remote Mechanisms)



**Note:**  
All Active connections must be on the same phase.

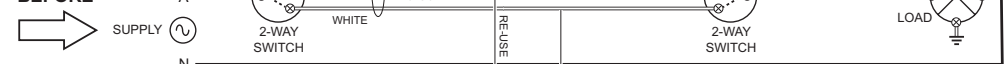
A	Active
N	Neutral
L	Load
CTL	ControlLink
PE	Protective Earth

#### Notes:

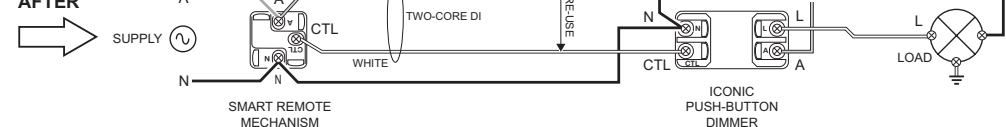
- Up to 5 way dimming (e.g. 1 dimmer plus up to 4 remote mechanisms, or up to 3 dimmers plus 2 remote mechanisms). In case of multiple dimmers being installed, each dimmer must be connected to a separate load.
- Total length of ControlLink cable in a circuit must not exceed 50 m.
- Control and load cables must not be coupled.

### Retrofit (2-way illustration shown)

#### BEFORE

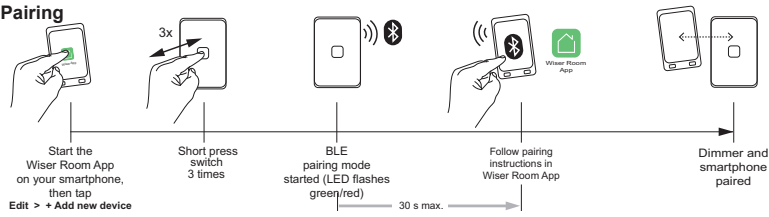


#### AFTER



## Using the Wisier Room App

### Pairing



### Dimmer default settings

The dimmer can be installed and operated 'out of the box' as a dimmer mechanism with no configuration. The dimmer incorporates a **Memo** function, so after switching **OFF** the load will return to the previous brightness level switched **ON** again. **Note:** At low dim levels a **kick-start** may occur.

### Customising with the Wisier Room App

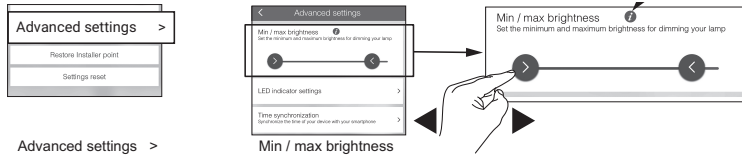
Use the Wisier Room App to customise the dimmer:

- Adjust the minimum brightness level based on the load requirements
- Change the status LED indicator behaviour
- Create an Installer restore point to save the settings in case a future restore is needed (**highly recommended**)
- 'Copy and paste' settings from another Wisier Iconic dimmer to save time when configuring multiple dimmers, such as when installing in an apartment block.

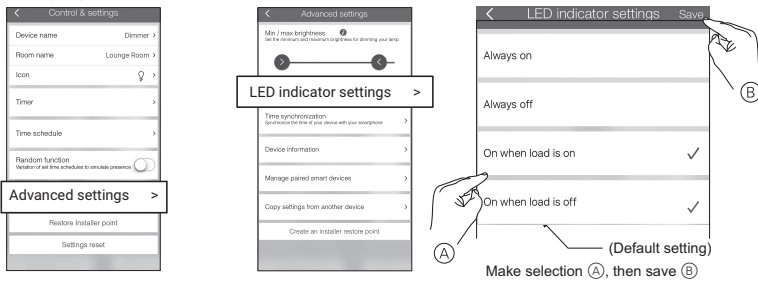
You can use the Wisier Room App to set and adjust the timer, and set up to 16 time schedules with configurable dimming levels.

**Note:** When controlling with the Wisier Room App be in the same room and within a range of 8-10 m of the dimmer. Range can be affected by walls and other structures.

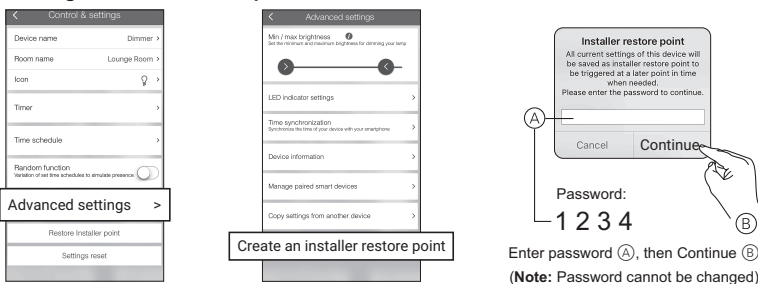
### Adjusting the minimum brightness level



### Changing the LED indicator behaviour

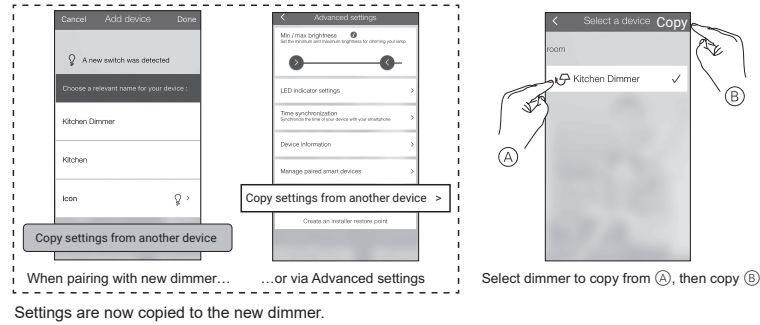


### Creating an Installer restore point



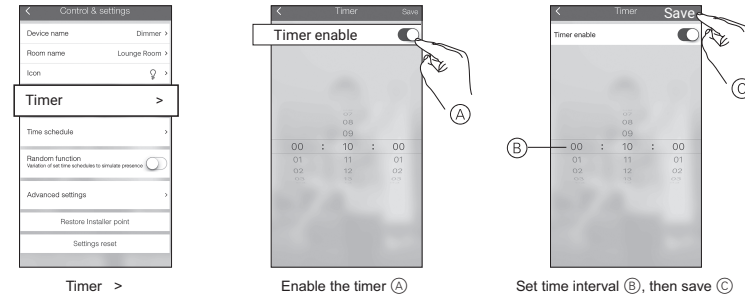
### 'Copy and paste' settings from another Wisier Iconic dimmer

**Note:** Settings can only be copied from a dimmer of the exact same model.

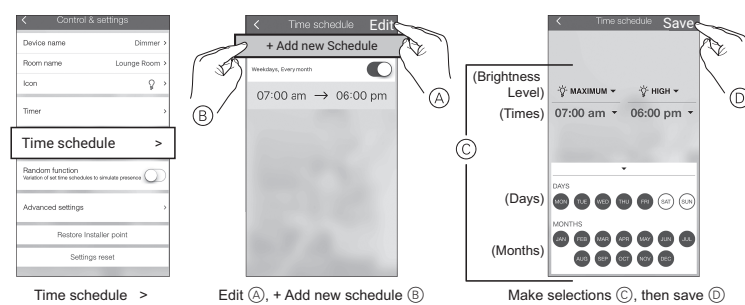


### Setting/Adjusting the timer

**Note:** When the timer is operating, time schedules are suspended.

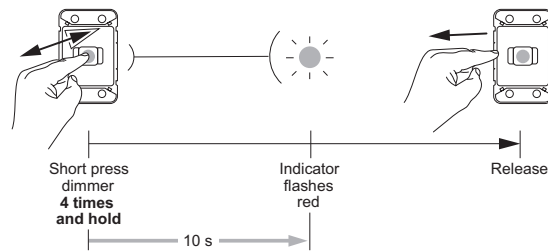


### Setting a time schedule



### Restoring the dimmer to factory defaults

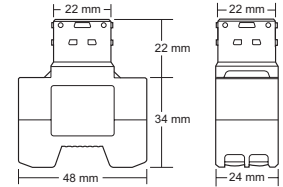
**Note:** All customised dimmer settings and bluetooth pairing information will be lost. Remove the skin before restoring to see the mechanism indicator.



## Technical data

**Note:** See product data sheet for full specifications. Specifications typical at 25 °C.

Operating voltage	220–240 V a.c., 50 Hz
Load rating	No minimum load required, Max. 300 W
Load connection	LED indicator flashes in the event of load disconnection or failure.
Multi-way limits	Max. 5-way dimming (Max. 3 Wisier Iconic Push-Button Dimmers + remainder Iconic Remote Mechanisms.)
Multi-way interface	ControlLink
ControlLink cable limit	Max. 50 m for entire circuit
Dimming range	Min. 0%, Max. 100% (depending on load)
Power failure data retention	Internal date/time retained for up to 6 hrs. Settings preserved indefinitely.
Environmental rating	IP20 (designed for indoor use only)
Operating humidity	5%–90% RH, non-condensing
Compliance	AS/NZS 60669.2.1, AS/NZS CISPR-15



## Customer care

### Warranty information

We warrant this product for 2 years—for details visit:

[www.schneider-electric.com.au/en/about-us/legal/terms-and-conditions.jsp](http://www.schneider-electric.com.au/en/about-us/legal/terms-and-conditions.jsp)



### Schneider Electric (Australia) Pty Ltd

33 Port Wakefield Road, Gepps Cross SA 5094

Customer Care: 13 73 28

Email: [customercare.au@se.com](mailto:customercare.au@se.com)

[www.schneider-electric.com.au](http://www.schneider-electric.com.au)

Schneider Electric reserves the right to change specifications, modify designs and discontinue items without incurring obligation and whilst every effort is made to ensure that descriptions, specifications and other information in these instructions are correct, no warranty is given in respect thereof and the company shall not be liable for any error therein.

© Schneider Electric 2019

This material is copyright under Australian and international laws. Except as permitted under the relevant law, no part of this work may be reproduced by any process without prior written permission of and acknowledgment to Schneider Electric.

Android is a trademark of Google LLC.

Apple is a trademark of Apple Inc., registered in the U.S. and other countries.