



### Main

Product or component type	Dv/dt filter
Range compatibility	Altivar Easy 610 Altivar Process ATV600 Altivar Process ATV900
Product specific application	Output filter
[In] rated current	95 A
Product compatibility	Variable speed drive ATV630 wall mount, motor: 15 kW 200...240 V Variable speed drive ATV630 wall mount, motor: 18.5 kW 200...240 V Variable speed drive ATV630 wall mount, motor: 22 kW 200...240 V Variable speed drive ATV630 wall mount, motor: 30 kW 380...480 V Variable speed drive ATV630 wall mount, motor: 37 kW 380...480 V Variable speed drive ATV630 wall mount, motor: 45 kW 380...480 V Variable speed drive ATV650 wall mount, motor: 30 kW 380...480 V Variable speed drive ATV650 wall mount, motor: 37 kW 380...480 V Variable speed drive ATV650 wall mount, motor: 45 kW 380...480 V Variable speed drive ATV610 motor: 30 kW 380...415 V Variable speed drive ATV610 motor: 37 kW 380...415 V Variable speed drive ATV610 motor: 45 kW 380...415 V Variable speed drive ATV930 wall mount, motor: 15 kW 200...240 V Variable speed drive ATV930 wall mount, motor: 18.5 kW 200...240 V Variable speed drive ATV930 wall mount, motor: 22 kW 200...240 V Variable speed drive ATV930 wall mount, motor: 30 kW 380...480 V Variable speed drive ATV930 wall mount, motor: 37 kW 380...480 V Variable speed drive ATV930 wall mount, motor: 45 kW 380...480 V Variable speed drive ATV950 wall mount, motor: 30 kW 380...480 V Variable speed drive ATV950 wall mount, motor: 37 kW 380...480 V Variable speed drive ATV950 wall mount, motor: 45 kW 380...480 V
Sale per indivisible quantity	1
Electrical connection	Terminal block, connection capacity: 50 mm <sup>2</sup> / AWG 1/0

### Complementary

Motor cable length	<= 500 m unshielded cable <= 300 m shielded cable at 4 kHz
DV/dt	3000 V/μs max at 200...240 V 3000 V/μs max at 380...480 V
Thermal losses	
Output frequency	<= 100 Hz
Ambient air temperature for operation	-10...50 °C without current derating 50...60 °C with current derating 1.5 % per °C
Operating altitude	0...1000 m without current derating 1000...4000 m with current derating 1 % per 100 m

The information provided in this documentation contains general descriptions and/or technical characteristics of the products contained herein. This documentation is not intended as a substitute for and is not to be used for determining suitability or reliability of these products for specific user applications. It is the duty of any such user or integrator to perform the appropriate and complete risk analysis, evaluation and testing of the products with respect to the relevant specific application or use thereof. Neither Schneider Electric Industries SAS nor any of its affiliates or subsidiaries shall be responsible or liable for misuse of the information contained herein.

Width	300 mm
Height	610 mm
Depth	245 mm
Product weight	19 kg

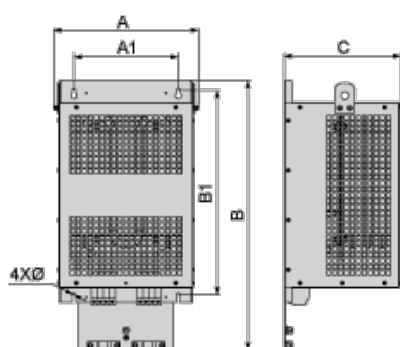
## Environment

IP degree of protection	IP20 IP21 (with kit VW3A53905)
ambient air temperature for storage	-40...70 °C

## Offer Sustainability

Sustainable offer status	Not Green Premium product
RoHS (date code: YYWW)	Compliant - since 1433 - Schneider Electric declaration of conformity

## Dimensions



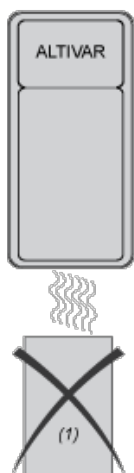
Dimensions in mm

A	B	C	A1	B1	Ø
300	590	245	210	411	7

Dimensions in in.

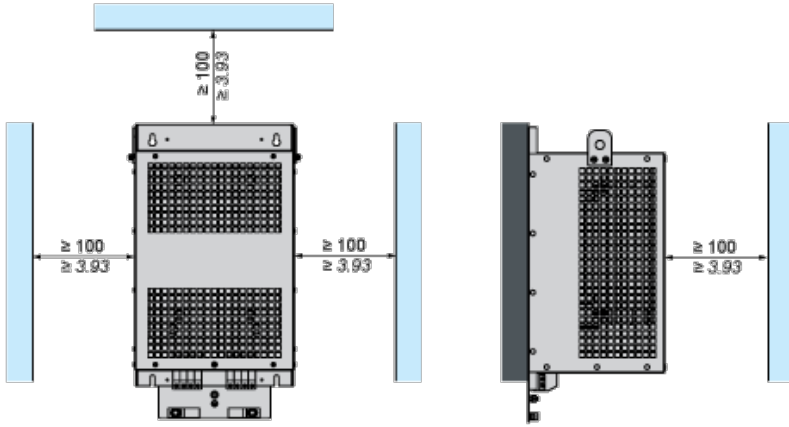
A	B	C	A1	B1	Ø
11.8	23.2	9.6	8.3	16.2	0.28

## Mounting and Clearance

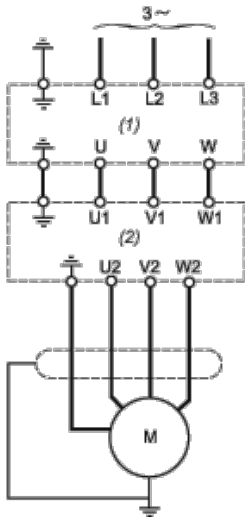


(1) Filter

mm  
in.



### Recommended Schema



- (1) Drive
- (2) Filter