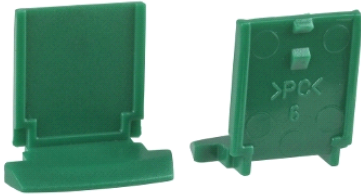


## VDIM11U243

Actassi 19-C Patch Panel RJ45 shutter Green pack of 24pcs



### Main

Range of product	Actassi
Range	Actassi
Product or component type	RJ45 shutter
Accessory / separate part destination	19" copper panel
Colour tint	Green
Colour tint	Green

### Complementary

Quantity per set	Set of 24
Material	PC
Width	80 mm
Height	20 mm
Depth	60 mm

### Environment

#### Offer Sustainability

Sustainable offer status	Green Premium product
RoHS (date code: YYWW)	Compliant - since 0935 - Schneider Electric declaration of conformity
REACH	Reference not containing SVHC above the threshold
Product environmental profile	Available
Product end of life instructions	Need no specific recycling operations

The information provided in this documentation contains general descriptions and/or technical characteristics of the products contained herein. This documentation is not intended as a substitute for and is not to be used for determining suitability or reliability of these products for specific user applications. It is the duty of any such user or integrator to perform the appropriate and complete risk analysis, evaluation and testing of the products with respect to the relevant specific application or use thereof. Neither Schneider Electric Industries SAS nor any of its affiliates or subsidiaries shall be responsible or liable for misuse of the information contained herein.