

TM171AETHRS485

Modicon M171 Performance Plug-in Ethernet and BACnet MSTP or Modbus



Main

Range of product	Modicon M171
Product or component type	Communication module
Communication port protocol	Ethernet HTTP Modbus RTU Modbus TCP SMTP BACnet MS/TP BACnet IP RS485

Complementary

Integrated connection type	Ethernet RJ45 - twisted pair RS485 wire crimp - twisted pair
Adjustment	Pitch 3.81 mm
Electrical connection	Removable screw terminal block
Physical interface	90° insertion - 2.5 mm² cable RJ45
Supply	Via base board EVD/EVC
Product compatibility	Logic controller M171 performance
Product weight	0.077 kg

Environment

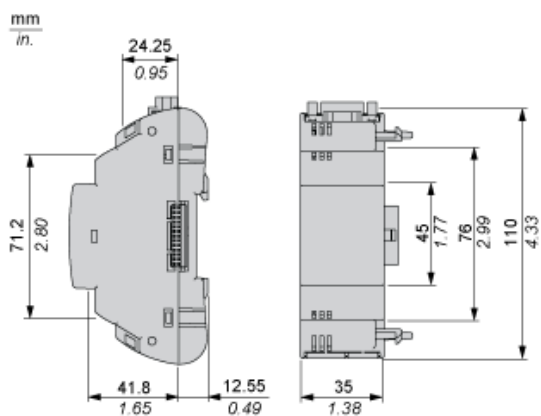
product certifications	CE CSA CURus EAC
marking	CE
IP degree of protection	IP20
ambient air temperature for operation	-10...55 °C
ambient air temperature for storage	-20...85 °C
relative humidity	10...90 % without condensation

Offer Sustainability

Sustainable offer status	Not Green Premium product
RoHS (date code: YYWW)	Compliant - since 1429 - Schneider Electric declaration of conformity
REACH	Reference not containing SVHC above the threshold

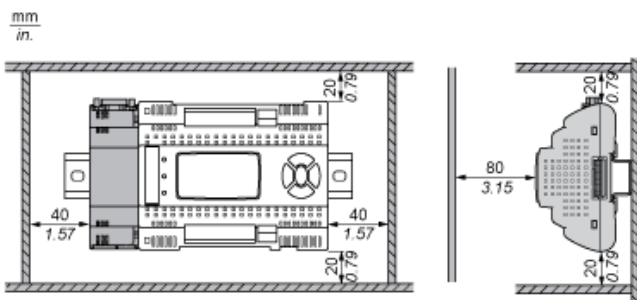
Dimensions

The information provided in this documentation contains general descriptions and/or technical characteristics of the products contained herein. This documentation is not intended as a substitute for and is not to be used for determining suitability or reliability of these products for specific user applications. It is the duty of any such user or integrator to perform the appropriate and complete risk analysis, evaluation and testing of the products with respect to the relevant specific application or use thereof. Neither Schneider Electric Industries SAS nor any of its affiliates or subsidiaries shall be responsible or liable for misuse of the information contained herein.

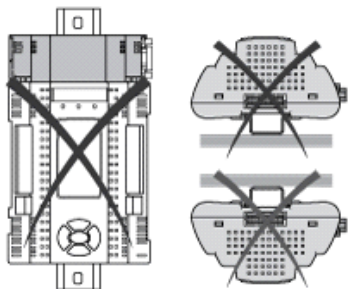


Mounting and Clearance

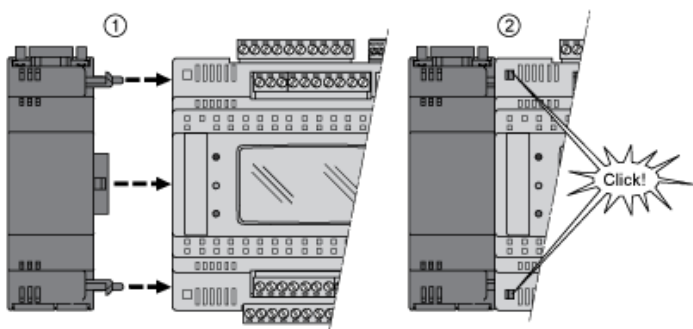
Clearance



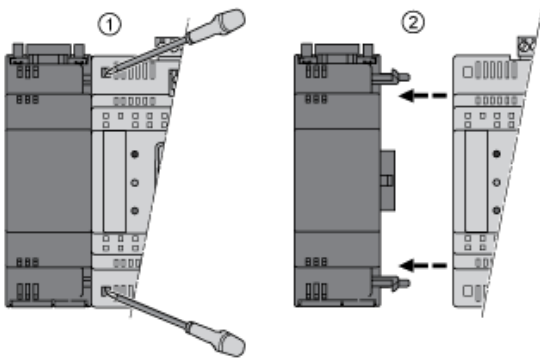
Misplacement



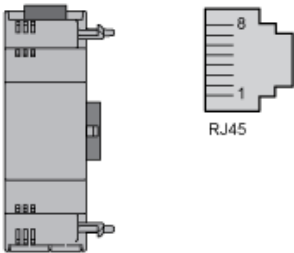
Mounting on Controller



Dismounting



Ethernet Port (ETH)



Serial Line Port (RS 485)

