



Main

Range of product	Modicon M171
Product or component type	Communication module
Communication port protocol	Ethernet HTTP Modbus TCP SMTP BACnet IP

Complementary

Integrated connection type	Ethernet RJ45 - twisted pair
Physical interface	RJ45 - 100BASE-TX
Supply	Via base board EVD/EVC
Product compatibility	Logic controller M171 performance
Product weight	0.077 kg

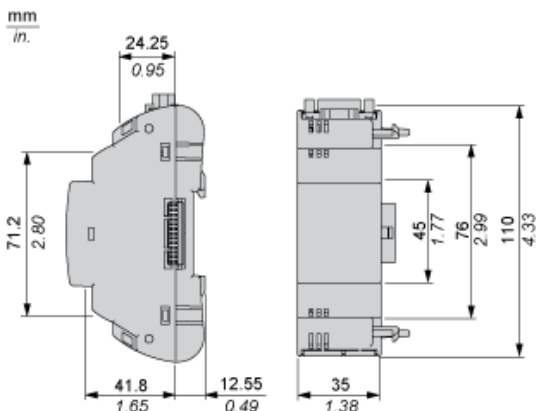
Environment

product certifications	CE CSA CURus EAC
marking	CE
IP degree of protection	IP20
ambient air temperature for operation	-10...55 °C
ambient air temperature for storage	-20...85 °C
relative humidity	10...90 % without condensation

Offer Sustainability

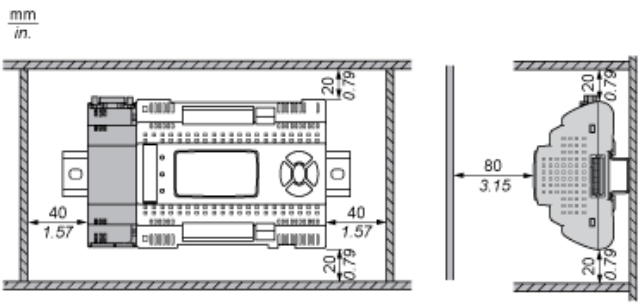
Sustainable offer status	Not Green Premium product
RoHS (date code: YYWW)	Compliant - since 1426 - Schneider Electric declaration of conformity
REACH	Reference not containing SVHC above the threshold

Dimensions

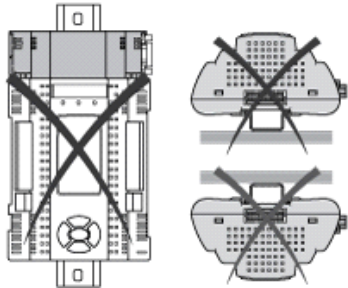


Mounting and Clearance

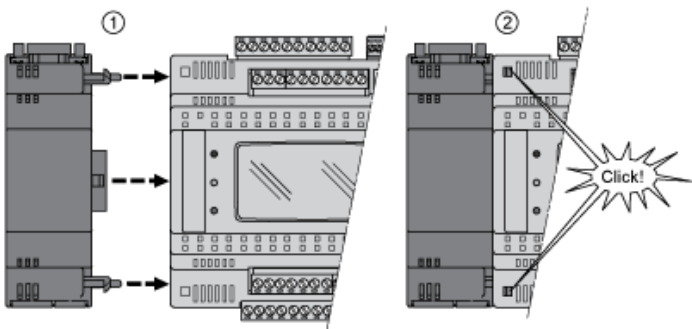
Clearance



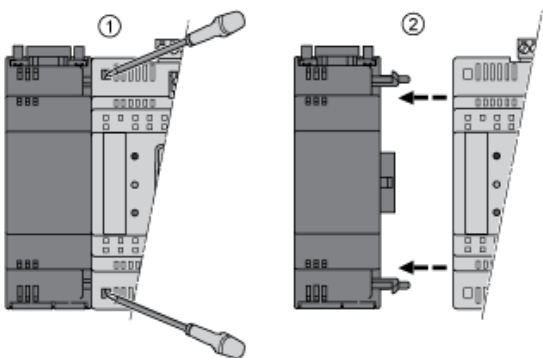
Misplacement



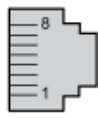
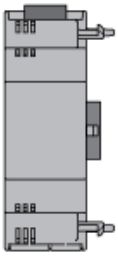
Mounting on Controller



Dismounting



Ethernet Port (ETH)



RJ45