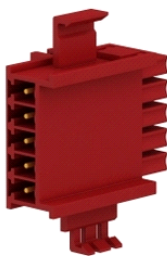


XPSMCMCN0000SG

single backplane expansion connector to connect the expansion modules



Main

Range of product	Preventa Safety automation
Accessory / separate part category	Expansion bus connector
Accessory / separate part type	Backplane expansion bus connector
Product compatibility	Logic controller Extension modules
Accessory / separate part destination	For modular device

Complementary

Electrical connection	1 male + 1 female connectors, 5-pin for rear panel plug-in connector
Quantity per set	1
Mounting support	Omega 35 mm DIN rail conforming to IEC 60715
Product weight	0.01 kg

Environment

The information provided in this documentation contains general descriptions and/or technical characteristics of the products of the Schneider Electric group. It is not intended as a substitute for and is not to be used for determining suitability or reliability of these products for specific user applications. It is the duty of any such user or integrator to perform the appropriate and complete risk analysis, evaluation and testing of the products with respect to the relevant specific application or use thereof. Neither Schneider Electric Industries SAS nor any of its affiliates or subsidiaries shall be responsible or liable for misuse of the information contained herein.