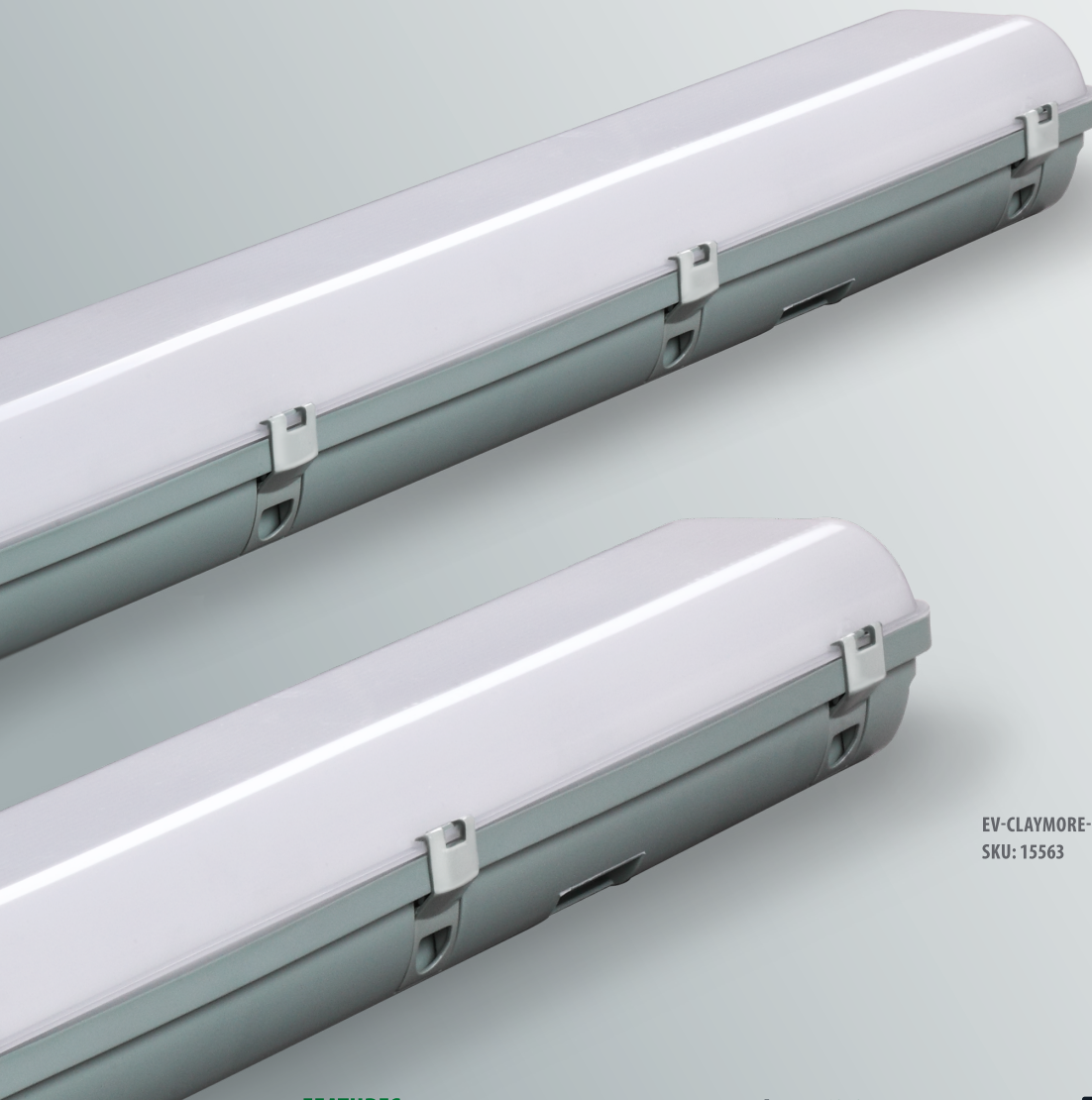




CLAYMORE WP PRO

48W LED EMERGENCY BATTEN



EV-CLAYMORE-PRO-EM
SKU: 15563

FEATURES

- Emergency PRO model
- Weatherproof batten
- Complete with stainless steel clips
- Lithium Battery (LiFePO4) environmentally friendly



COLOUR TEMPERATURE:
4000K



WARRANTY:
5 Years



IP RATING:
IP65 ingress protection



IK RATING:
IK08

ORDERING INFORMATION

| SKU | PRODUCT CODE | DESCRIPTION | PRODUCT NUMBER | CARTON QTY. |
|-------|--------------------------|--|----------------|-------------|
| I5563 | EV-CLAYMORE-I200-IP65-EM | Claymore PRO IP65 48W LED 1200mm Batten with Emergency | 9336462155639 | 4 |

OPERATIONAL INFORMATION

| GENERAL | | | | BATTERY | |
|---------------------|------------|--------------------------|------------------------|-----------------|----------------|
| Voltage | 220-240V | Emergency Classification | C0: D63 C90: D40 (2Hr) | Wiring | Terminal Block |
| Frequency | 50 Hz | Duration | 90 / 120 min | Battery Type | LiFePO4 |
| Wattage | 48W | IP Rating | IP65 | Battery Voltage | 6.4V 3000mAh |
| Class | I | IK Rating | IK08 | Battery Code | 01303 |
| Working Temp. Range | 0 - 35°C | Lumens | 48W 4100lm | Charging Time | 16 Hours |
| CRI | >80 | Lifetime | L70 (9K) 54,000 Hrs | Charger Type | Variable |
| CCT | 4000K (CW) | | | Mounting Type | Surface mount |
| | | | | Warranty | 5 Years |

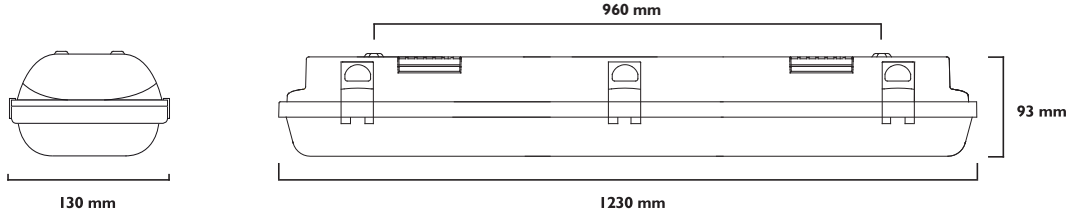
TOTAL POWER CONSUMPTION (TPC)

| MODEL | LED WATTAGE | MAINTAINED (LAMP ON) | | NON-MAINTAINED (LAMP OFF) | |
|----------------------------------|-------------|----------------------|--------|---------------------------|-------|
| | | Avg. | Max. | Avg. | Max. |
| EV-CLAYMORE I200-IP65-EM (I5563) | 48 W | 50 W | 54.5 W | 0.7 W | 3.6 W |

CONSTRUCTION AND DIMENSIONS

| | |
|---------------|---------------------|
| BODY (FINISH) | PC |
| GEAR TRAY | Powder coated steel |
| DIFFUSER | PC |

CLAYMORE PRO



ACCESSORIES LIST

| SKU | PRODUCT CODE | PRODUCT NUMBER | DESCRIPTION |
|-------|-------------------------|----------------|---|
| 01303 | EV-3000mAh-6.4V-LiFePO4 | 9336462013045 | Battery, Stick 3000mAh 6.4V 2 Cell LiFePO4 |
| I1465 | EV-SS316-WP-CLIPS | 9336462114650 | Vandal resistant stainless steel 316 clips/screw/allen key- kit (10 pack) |
| I5170 | ZC-MW-BATTEN | 9336462151709 | Microwave sensor 12m, batten kit, IP65 |

Datasheet is subject to change without notice

Last updated: 10. Jan. 2020_V1.0