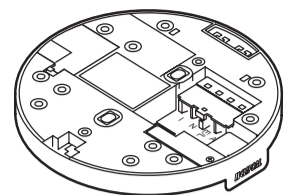


FIRE TEK[®] Mounting Base

755RB

Smoke Alarm Mounting Base with Integrated Relay



CLIPSAL
by Schneider Electric

More information is available

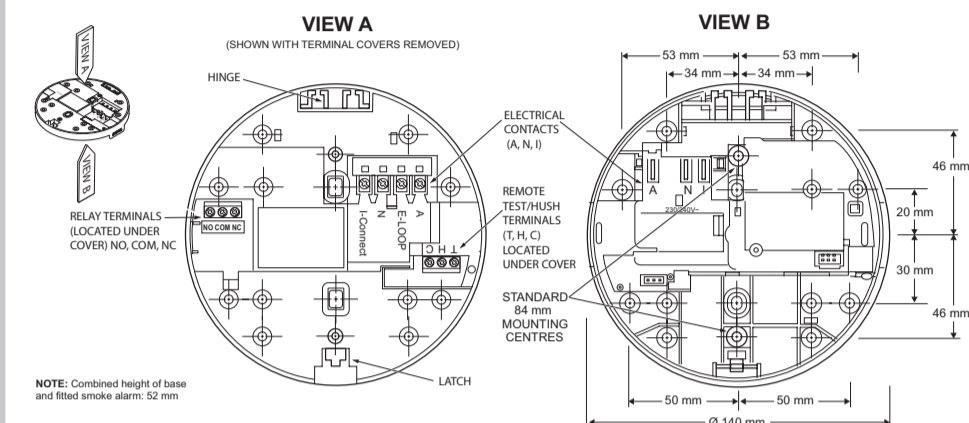


<https://updates.clipsal.com/ClipsalOnline/Files/Brochures/W0001710.pdf>

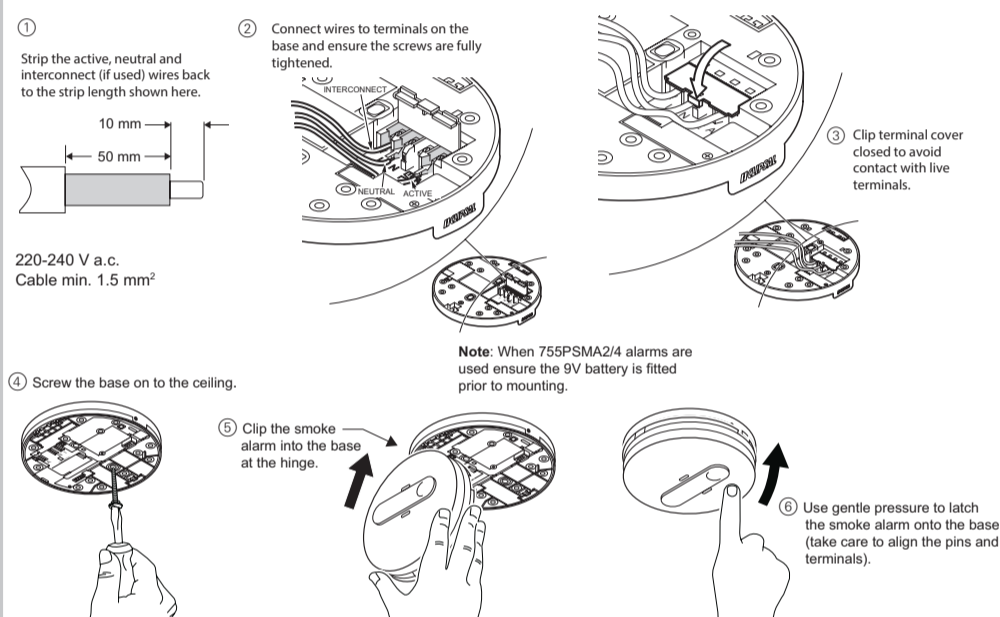
Scan the QR code for more information about your Clipsal smoke alarm:

- What smoke alarms can and cannot do
- Developing and practising a plan of escape
- What to do if an alarm sounds.

Operating elements



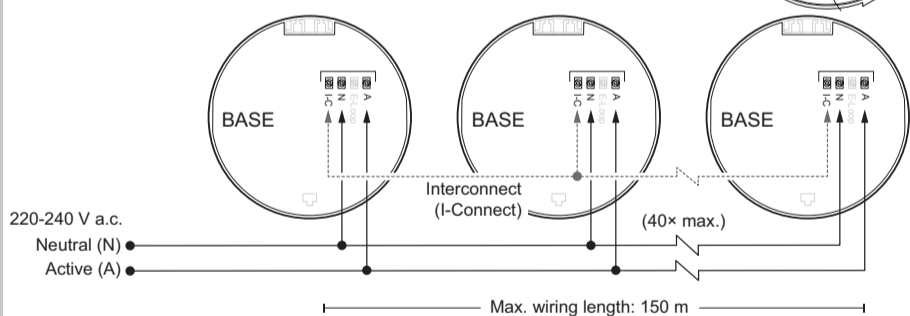
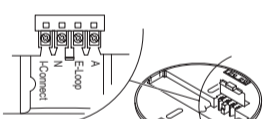
Installation



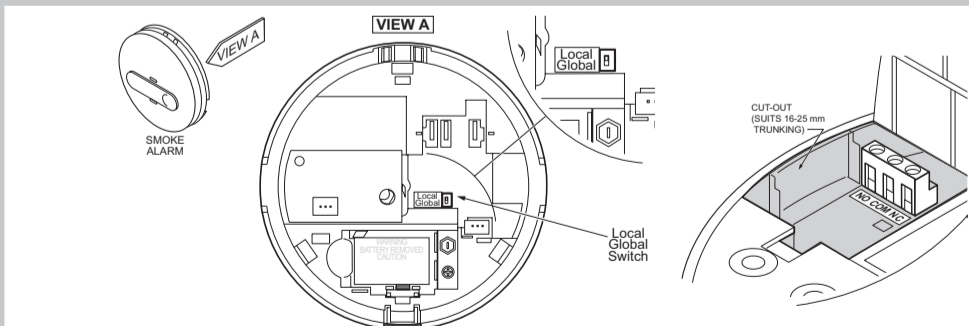
Interconnecting smoke alarms

Terminal markings:

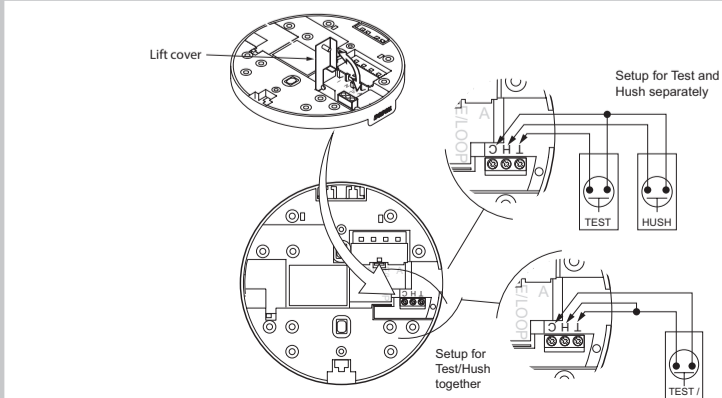
- A:** Active/Line (Red)
- E-Loop:** Earth Wire
- N:** Neutral (Black)
- I-Connect:** Interconnect



Relay operation and configuration



Remote Test/Hush Feature



General information

- Leave these instructions with the occupant, to be retained for the life of the product.
- The smoke alarm base must be installed by a licenced electrician.

Compatibility

This product is compatible with the following Clipsal Smoke alarms:

- 755RLPSMA2
- 755RLPSMA4
- 755PSMA2
- 755PSMA4

- This base is not compatible with third party products or systems such as fire panels.

For your safety

⚠ DANGER

RISK OF ELECTRIC SHOCK, EXPLOSION OR ARC FLASH

- This product must only be installed and serviced by appropriately qualified and/or licenced electrical personnel.
- This product must only be used for the purpose described in these instructions and must be installed in accordance with the wiring rules and regulations in that location.
- Isolate the electrical supply before doing any work on this product.
- Ensure the product has been correctly installed and tested for safe operation before reconnecting the electrical supply.

Failure to follow these instructions will result in death or serious injury.

⚠ CAUTION

EQUIPMENT INSTALLATION HAZARD

- All interconnected smoke alarms (max 40) must be supplied from the same interconnection. A common Neutral must be used for the interconnect to operate.
- DO NOT connect the interconnect wire to Active or Neutral.
- Do not connect to a circuit which also has inductive loads connected. Spikes generated by switching inductive loads may damage electrical components within the base or connected smoke alarm.
- Do not open this base, as there are no user-serviceable parts inside.

Failure to follow these instructions may result in injury or equipment damage.

Choosing the installation location

NOTICE

EQUIPMENT INSTALLATION COMPLIANCE

This product must be installed in accordance with the National Construction Code and any local state legislation requirements.

Failure to follow these instructions may result in a non-compliant installation.

- Ensure there are no obstructions in ceiling mounting locations, such as pipes or cables.

Installation

- Only install the product indoors in a stand-alone or wired interconnected set up (see *Interconnecting smoke alarms*).
- Do not attach to surfaces which are damp, freshly painted or otherwise electrically conductive (e.g. metallic surfaces).

Mounting and connecting the smoke alarm

- ⇒ Follow the illustrations
- ① Turn on the mains power and check:
 - The green LED illuminates to show active connection to power.
 - The red LED pulses every 40 seconds to show correct operation.
- ② Press Test/Hush to check smoke alarm functions.

Interconnecting smoke alarms

⇒ (see *Interconnecting smoke alarms*)

- Always test operation after adding or removing smoke alarms to an interconnection setup.

Relay operation and configuration

Global/Local Relay Setting

The 755 series smoke alarms have a **Global/Local** switch for use with 755RB mounting base only.

When the **Global/Local** switch is set to **Local**, only activation of the connected alarm will operate the relay.

When the **Global/Local** switch is set to **Global**, activation of any smoke alarm that is interconnected with the base causes the relay to operate.

The default setting is **Global**.

Relay Operation

When the smoke alarm is triggered, the relay on the relay base will operate according to the description in **Global/Local Relay** Setting both when mains or backup battery power is applied.

Relay Output Connection

For connecting auxiliary devices, the relay mounting base terminal specifications are:

- NO (Normally Open)
- COM (Common)
- NC (Normally Closed).
- Wiring capacity 2 × 1.5 mm² each
- Combination screw head type.
- Voltage-free and segregated from the mains supply terminal connections with a physical barrier.
- Relay rating is 250 V a.c., 2 A.

Remote Test/Hush function

The Remote Test/Hush feature is controlled by the smoke alarm. Bases provide optional connection for remote test/hush buttons (dry contact momentary remote switches e.g. Clipsal bell press switches).

Connection options for remote test/hush buttons

- Connect remote buttons as either separate Test and Hush buttons, or as single Test/Hush button.
- Wiring capacity of each terminal is 2 × 1.5 mm² cables.
- Terminal screws are combination screw head type.
- Max. cable length to Remote Test/Hush switch is 20 m.

Test function - when no smoke present

Test the LOCAL smoke alarm

Press and hold either the Remote Test button or the Local Test/Hush button and release within 4 seconds. Only the local smoke alarm will sound.

Test the LINKED smoke alarms

Press and hold either the Remote Test button or the Local Test/Hush button for more than 5 seconds. The linked alarms will sound.

Hush function - when smoke present

To hush a smoke alarm, identify the unit which has triggered by the flashing red LED (Unit will not silence if it does not have a flashing red LED.) Press and hold the local Test/Hush button or the remote hush button for 40 seconds. All smoke alarms that are interconnected will also fall silent.

If multiple interconnected alarms have detected smoke and are flashing red LEDs, then press the Remote Hush button or the local Test/Hush button on each alarm to silence them.

- After the Test/Hush button has been pressed, wait 10 minutes before doing additional testing to avoid any abnormal responses as units have reduced sensitivity during this period.

Disposal

It is recommended to dispose of this device at an authorised electronic waste collection point. Professional recycling protects people and the environment against potential negative effects.

Technical data

Mains Power Source	220-240 V a.c., 50 Hz
Operating Temperature	0 °C to 45 °C
Ambient Humidity	5% to 95%
Interconnecting	Max 40 alarms (wired over 150 m)
Terminal provisions	Active, Neutral, Loop and Interconnect terminals, each accommodates 2 × 1.5 mm ²
Relay Rating	250 V d.c., 2 A
Relay Contacts	NO/COM/NC voltage free contacts
Remote Input	Dry contact momentary switch (for Remote Test/Hush function)
Approvals	Activfire RCM
Complies with	AS/NZS 60065 AS/NZS 60950.1

Trademarks and certifications

Schneider Electric acknowledges that the Australian Standard Certified Product logo is a trademark of SAI Global, and that the Activfire Certified logo is a trademark of CSIRO.



Warranty

We warrant this product to be free from defects in materials and workmanship for a period of 5 (five) years from the date of installation.

Customer care

If you have technical questions, please contact the Customer Care Centre in your country.

Australia

Schneider Electric (Australia) Pty Ltd
Customer Care Australia: 13 78 23
e: customercare.au@schneider-electric.com
www.schneider-electric.com.au

New Zealand

Schneider Electric (NZ) Ltd
After hours service: 0800 735 4357 (NZ only)
Customer Care NZ: 0800 652 999
e: sales@nz.schneider-electric.com
www.schneider-electric.com