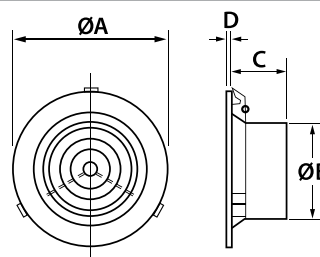


INTERNAL CEILING GRILLES

Model	Description	Code	Technical Data			
-------	-------------	------	----------------	--	--	--



ALV215
ALV216
ALV217
ALV218



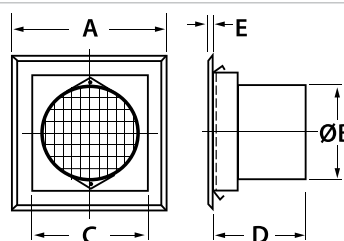
Jet Centre Grille: Euro WR

This range of downjet ceiling diffusers evenly disperses air to a chosen area. Simple to install, it comes with spring loaded attachment arms that lock and secure the vent in place.

Model	Code	Duct Size	A	B	C	D
Euro 4WR	ALV215	100	143	98	57	5
Euro 6WR	ALV216	150	235	148	95	5
Euro 8WR	ALV217	200	255	198	105	5
Euro 10WR	ALV218	250	330	248	120	5



ALV219
ALV220
ALV221



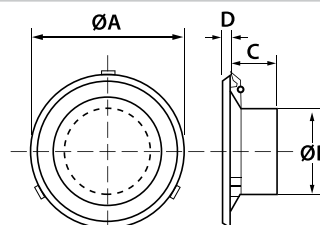
Egg Crate Grille: ERG

The square-faced egg crate grille is commonly used for air intake. Metal construction.

Model	Code	Duct Size	A	B	C	D	E
ERG151515	ALV219	150	200	148	155	120	5
ERG202015	ALV220	200	250	198	210	125	5
ERG202020	ALV221	200	250	198	210	125	5



ALV222
ALV223
ALV224
ALV225
ALV226



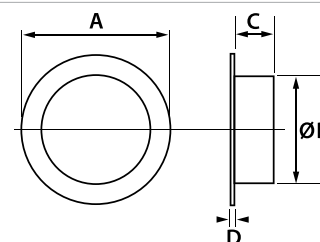
Cone Grille: Euro WRC

Commonly used for air intake, the design of these ceiling diffusers accept air from surrounding surfaces and not directly below. Ideal for heat, smoke and vapour extraction/transfer. Simple airflow control – screw the inverted cone centre.

Model	Code	Duct Size	A	B	C	D
Euro 4WRC	ALV222	100	147	98	57	17
Euro 6WRC	ALV223	150	265	147	90	15
Euro 8WRC	ALV224	200	320	198	90	15
Euro 10WRC	ALV225	250	400	247	100	15
Euro 12WRC	ALV226	300	440	298	100	20



ALV227
ALV228
ALV229
ALV230



Stainless Steel Cone Grille: CG

Commonly used for air intake, the design of these ceiling diffusers accept air from surrounding surfaces and not directly below. Ideal for heat, smoke and vapour extraction/transfer. Simple airflow control – screw the inverted cone centre.

Model	Code	Duct Size	A	B	C	D
CG100	ALV227	100	140	98	45	9
CG125	ALV228	125	175	123	45	12
CG150	ALV229	150	220	148	60	20
CG200	ALV230	200	275	198	65	20