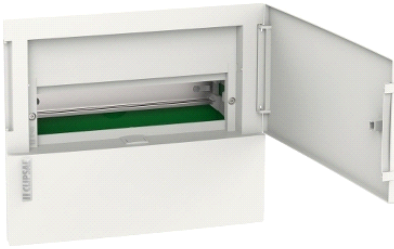


RMXE112F

Resi MAX consumer switchboard - 1 row - 12 modules - Flush mount



Main

Range	Resi MAX
Product brand	Clipsal
Product or component type	Enclosure
Enclosure type	Mini enclosure for modular device
Device application	Distribution
Number of 18 mm modules per row	12
Provided equipment	Earth terminal block Neutral terminal block DIN rail
Type of front cover	Plain
Colour	White (RAL 9003)
Door type	Plain

Complementary

Enclosure mounting	Flush
Number of horizontal rows	1
[In] rated current	63 A
Number of ways	12
Cable entry	Knock-out at top and bottom Knock-out at rear
Type of rail	35 mm asymmetrical rail
Number of terminal blocks	12 earth terminal block with screw connection outgoers 14 neutral terminal block with screw connection outgoers
Enclosure material	Technoplastic
Width	270 mm external 294 mm with door
Height	228 mm external 252 mm with door
Depth	80 mm external 98 mm with door

Environment

fire resistance	Door : 650 °C Back box : 850 °C
IP degree of protection	IP40
IK degree of protection	IK07

Offer Sustainability

Sustainable offer status	Not Green Premium product
--------------------------	---------------------------

The information provided in this documentation contains general descriptions and/or technical characteristics of the products contained herein. This documentation is not intended as a substitute for and is not to be used for determining suitability or reliability of these products for specific user applications. It is the duty of any such user or integrator to perform the appropriate and complete risk analysis, evaluation and testing of the products with respect to the relevant specific application or use thereof. Neither Schneider Electric Industries SAS nor any of its affiliates or subsidiaries shall be responsible or liable for misuse of the information contained herein.