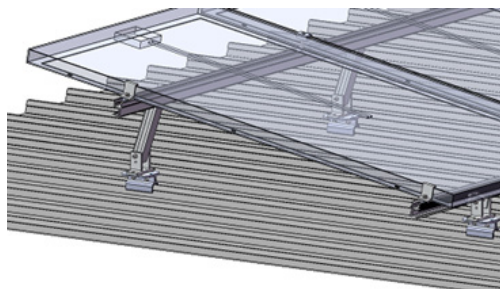
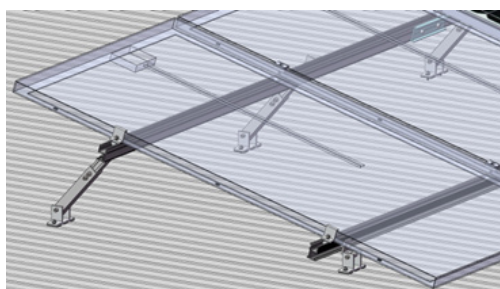


# PV-ezRack SolarRoof Adjustable Tilt Legs, preassembly

## - Assembly -

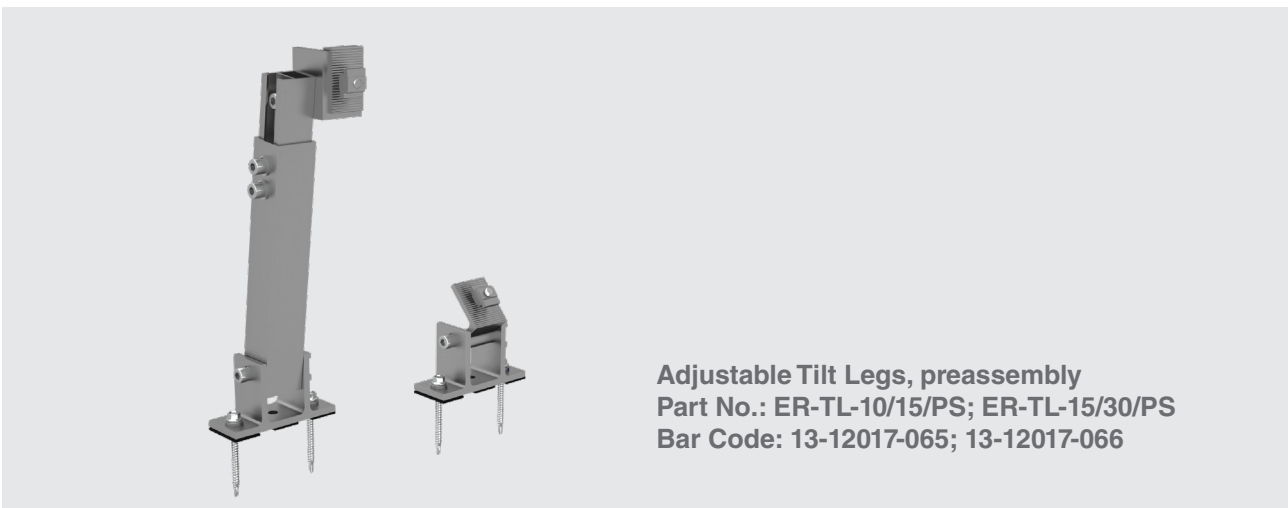


Install with Klip-lok Interface



Install on tin roof directly

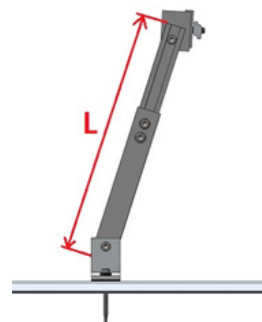
## - Components -



Adjustable Tilt Legs, preassembly  
 Part No.: ER-TL-10/15/PS; ER-TL-15/30/PS  
 Bar Code: 13-12017-065; 13-12017-066

## - Technical Specification -

<b>Screw Specification</b>	4 x Buildex 14-11 x 70 (14 gauge, 6.3 mm, 11 TPI, 70 mm long) Hex Head Zips screw
<b>Adjustable Range</b>	ER-TL-10/15/PS: 10-15° (L: 260-375 mm) ER-TL-15/30/PS: 15-30° (L: 390-635 mm)
<b>Weight</b>	ER-TL/10/15/PS: 1.056kg ER-TL/15/30/PS: 1.277 kg
<b>Packaging</b>	ER-TL-10/15/PS: 14 units per carton ER-TL-15/30/PS: 14 units per carton
<b>Material</b>	Tilt Legs: AL6005-T5; Fasteners: SUS304
<b>Color</b>	Silver (half-anodized no less than 10 µm)



Adjustable Length for Rear Leg