

Clipsal Saturn Range of Switches 4000 Series and Z4000 Series 20A/16AX 250V AC

Installation Instructions

⚠ WARNING

HAZARD OF ELECTRIC SHOCK OR ARC FLASH

This product must only be installed by a licensed electrical contractor or other persons authorised by legislation to work on the fixed wiring of any electrical installation.

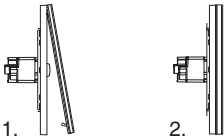
Failure to follow these instructions can result in death, serious injury or equipment damage.

Fascia Fitment and Removal

Fascia Fitment

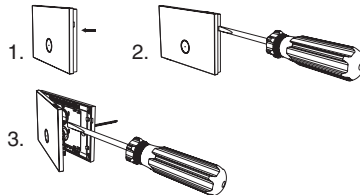
To ensure correct fitment of fascia to grid plate:

1. insert top fascia clips into the appropriate grid location
2. once inserted "snap-in" bottom of fascia.

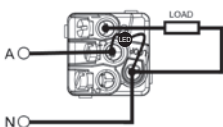


Fascia Removal

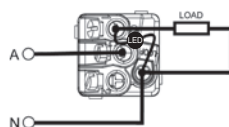
1. Locate screwdriver slot on the edge of the product.
2. Insert a flat blade screwdriver into the slot.
3. Using a levering action, remove the front fascia.



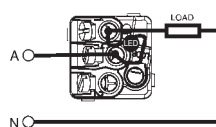
Wiring Diagrams/LED Indicator Options



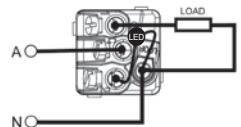
1. LED permanently on (neutral required)



2. LED on, switch on (neutral required)



3. LED on, switch off (no neutral required)



4. LED on, switch off (neutral required)

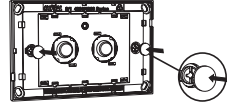
NOTES

- LED is factory fitted and is not removable.
- LED does not have to be connected, if not required.
- The LED wired across switch contacts (in option 3) may cause some brands of compact fluorescent lamps

to flicker when the switch is turned off. This does not cause any damage to the compact fluorescent lamp, but can be improved by using the neutral (as per option 4).

Fitting Screw Caps

1. Screw caps must be fitted when product is installed.
2. Mount switch to wall.



WARNING

HAZARD OF ELECTRIC SHOCK

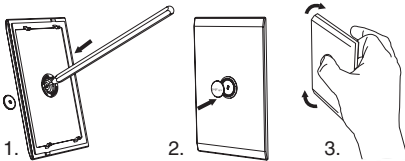
- Push in screw caps over mounting to ensure electrical isolation.
- Failure to follow these instructions can result in death or serious injury.**

Installation of Buttons

Both the Clipsal Saturn and Clipsal Saturn Zen Series feature encapsulated buttons. Button orientation can be changed to suit horizontal or vertical mounting. Follow steps below to remove or reposition buttons.

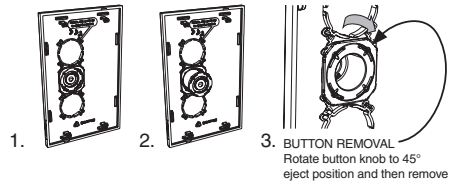
Clipsal Saturn Series

1. Remove encapsulated button with narrow object, i.e. pen.
2. Replace button with a label button cap.
3. Vertical and horizontal orientation.



Clipsal Saturn Zen Series

1. Remove existing button by rotating 45° and push to remove.
2. Replacement of button is reverse of step 1.
3. Ensure pictogram is located to suit vertical or horizontal orientation.



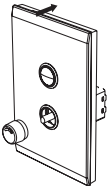
3. **BUTTON REMOVAL**
Rotate button knob to 45°
eject position and then remove

Fitting Dimmer Knob

Simply slide the dimmer knob onto the shaft protruding from the front of the switch fascia.

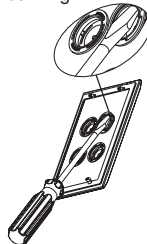
NOTE: Ensure the dimmer knob is correctly aligned with dimmer shaft. Fit fascia first **before** fitting knob.

Clipsal Saturn Series

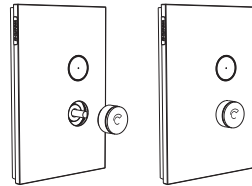


Button Bezels (Clipsal Saturn Series)

- Position flat blade screwdriver between encapsulated button and lock ring.
- Lightly twist screwdriver to release locking ring.
- Lift off locking ring.
- Remove bezel.
- To install, insert bezel into plate, noting notch position/alignment.
- Clip locking ring in place.



Clipsal Saturn Zen Series



Schneider Electric (Australia) Pty Ltd

Contact us: clipsal.com/feedback

National Customer Care Enquiries:

Tel 1300 2025 25

Fax 1300 2025 26

New Zealand National Customer Care Enquiries:

Tel 0800 652 999

Fax 0800 101 152

clipsal.com

Schneider Electric (Australia) Pty Ltd reserves the right to change specifications, modify designs and discontinue items without incurring obligation and whilst every effort is made to ensure that descriptions, specifications and other information in this catalogue are correct, no warranty is given in respect thereof and the company shall not be liable for any error therein.

© 2014 Schneider Electric. All Rights Reserved.
Trademarks are owned by Schneider Electric Industries SAS or its affiliated companies.