



## Clipsal Saturn Quad Switched Socket 4025H2 and Z4025H2

### Installation Instructions

REGISTERED DESIGN • REGISTERED PATENT

### **⚠ WARNING**

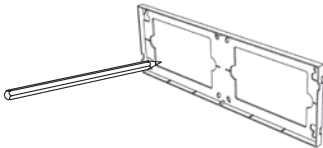
#### **HAZARD OF ELECTRIC SHOCK OR ARC FLASH**

This product must only be installed by a licensed electrical contractor or other persons authorised by legislation to work on the fixed wiring of any electrical installation.

**Failure to follow these instructions can result in death, serious injury or equipment damage.**

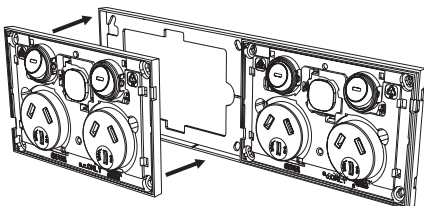
### Mounting Instructions

1. Using twin mounting frame provided, mark the cut-out location on wall.

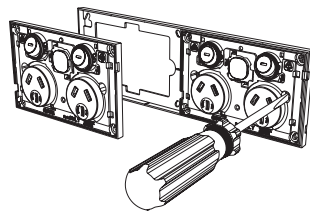


2. Cut-out opening in wall.

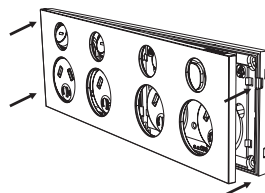
3. Clip both twin outlets into mounting frame



4. Screw-fix assembled grid to wall.

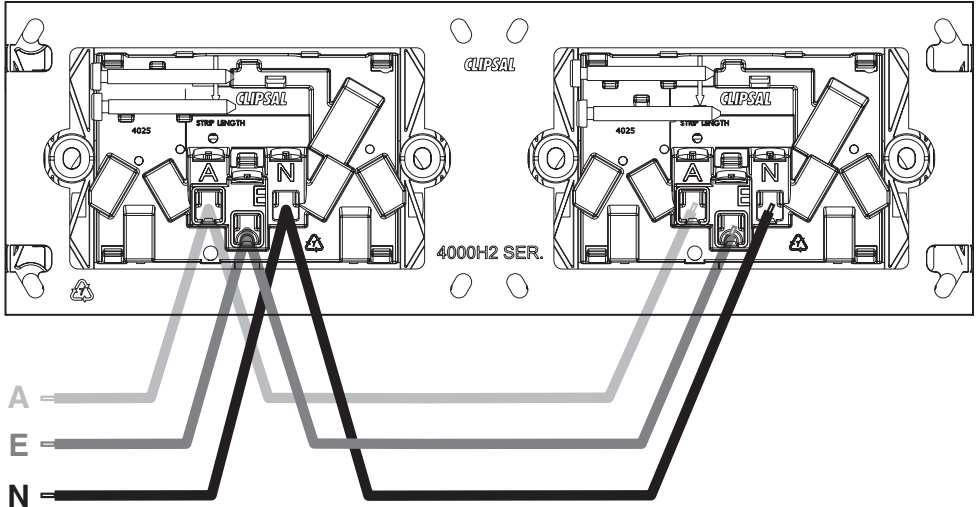


5. Clip twin fascia cover into grid.



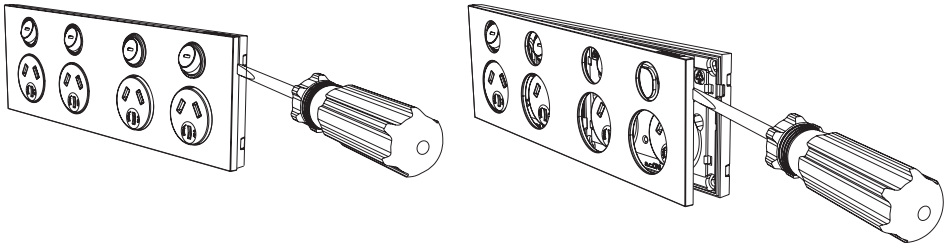
**Note:** For first fix it is recommended to use either of the following Clipsal mounting accessories: wall clip (2154H2), plaster bracket (2155PHRM2) or wall box (2157H2). The wall box (2157H2) may need to be recessed back, to compensate for 8mm recess of mounting centres.

## Rear View of Electrical Connections



## Fascia Removal

1. Locate screwdriver slot on the edge of the product.
2. Insert a flat blade screwdriver into the slot.
3. Using a gentle levering action, remove the front fascia.



Schneider Electric (Australia) Pty Ltd

Contact us: [clipsal.com/feedback](http://clipsal.com/feedback)

National Customer Care Enquiries:

**Tel 1300 2025 25**

**Fax 1300 2025 56**

**clipsal.com**

Schneider Electric (Australia) Pty Ltd reserves the right to change specifications, modify designs and discontinue items without incurring obligation and whilst every effort is made to ensure that descriptions, specifications and other information in this catalogue are correct, no warranty is given in respect thereof and the company shall not be liable for any error therein.

© 2014 Schneider Electric. All Rights Reserved.  
Trademarks are owned by Schneider Electric Industries SAS or its affiliated companies.