

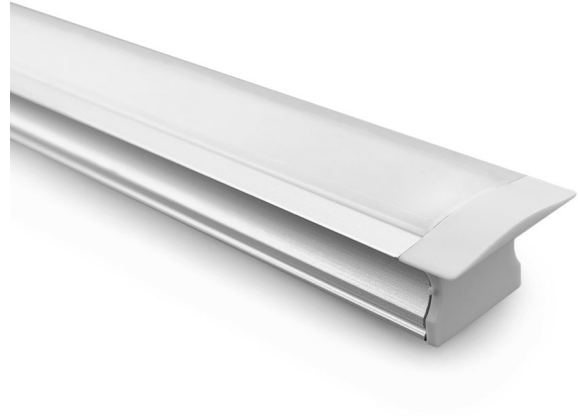
## AT9228

AT9228/2M

Square Deep Recessed Extrusion Kit

### Features

- Suits AT9251, AT9252, AT9253 IP20 LED strips
- Suits AT9251, AT9252, AT9253 IP67 LED strips but requires the silicon endcaps to be trimmed
- Suits AT9256 and AT9257 Pureline LED strips
- Suits AT9208 LED strip kits
- Diffuser clips in from front
- Supplied with 2x endcaps and 2x mounting clips



### ORDERING INFORMATION

<b>Order code</b>	16682
<b>Description</b>	Square Deep Recessed Extrusion KIT - 2M
<b>Item Code</b>	AT9228/2M

### DIMENSIONS

<b>Cutout</b>	18 mm
<b>Product Height</b>	15 mm
<b>Product Length</b>	2000 mm
<b>Product Width</b>	25 mm

### LINE DRAWINGS

AT9228

