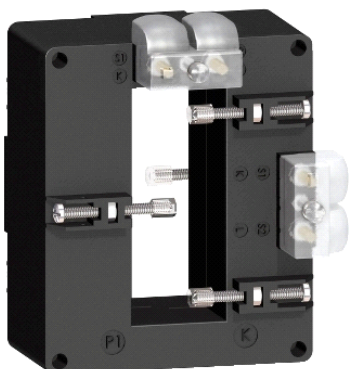


METSECT5DD150

current transformer tropicalised 1500 5 double output
for bars 34x84



Main

Range	PowerLogic
Product name	CT
Product or component type	Current transformer
Secondary current	5 A
Accuracy class	Class 0.5 maximum power: 15 VA Class 1 maximum power: 20 VA
[In] rated current	1500 A

Complementary

Current transformer type	Tropicalised for busbar
Current transformer ratio	1500/5
[Ith] conventional free air thermal current	60 kA
Dynamic withstand current	2.5 Ith
Safety factor	
[Ue] rated operational voltage	< 720 V AC at 50/60 Hz
[Ui] rated insulation voltage	3 kV
Mounting mode	Insulated locking screw
Mounting support	Busbar
Width	96 mm outside 35 mm inner
Height	116 mm outside 84 mm inner
Depth	58 mm outside
Product weight	0.676 kg
[Uimp] rated impulse withstand voltage	3 kV
Electrical insulation class	Class B
Opening of bars	84 x 34
Sealing	With

Environment

standards	VDE 0414 IEC 61869-2
product certifications	CE EAC
IP degree of protection	IP20
relative humidity	0...95 %
ambient air temperature for operation	-25...50 °C

Offer Sustainability

Sustainable offer status	Green Premium product
RoHS (date code: YYWW)	Compliant - since 1427 - Schneider Electric declaration of conformity
REACH	Reference not containing SVHC above the threshold
Product environmental profile	Available
Product end of life instructions	Need no specific recycling operations