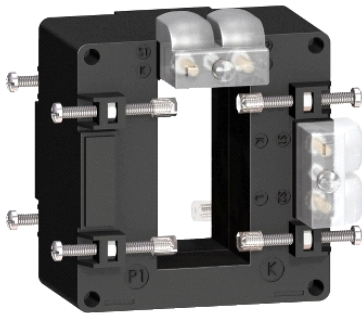


METSECT5DA100

current transformer tropicalised 1000 5 double output
for bars 32x65



Main

Range	PowerLogic
Product name	CT
Product or component type	Current transformer
Secondary current	5 A
Accuracy class	Class 0.5 maximum power: 15 VA Class 1 maximum power: 20 VA
[In] rated current	1000 A

Complementary

Current transformer type	Tropicalised for busbar
Current transformer ratio	1000/5
[Ith] conventional free air thermal current	60 kA
Dynamic withstand current	2.5 Ith
Safety factor	
[Ue] rated operational voltage	< 720 V AC at 50/60 Hz
[Ui] rated insulation voltage	3 kV
Mounting mode	Insulated locking screw
Mounting support	Busbar
Width	90 mm outside 65 mm inner
Height	94 mm outside 32 mm inner
Depth	40 mm outside
Product weight	0.606 kg
[Uimp] rated impulse withstand voltage	3 kV
Electrical insulation class	Class B
Opening of bars	65 x 32
Sealing	With

Environment

standards	VDE 0414 IEC 61869-2
product certifications	CE EAC
IP degree of protection	IP20
relative humidity	0...95 %
ambient air temperature for operation	-25...60 °C

Offer Sustainability

Sustainable offer status	Green Premium product
RoHS (date code: YYWW)	Compliant - since 1427 - Schneider Electric declaration of conformity
REACH	Reference not containing SVHC above the threshold
Product environmental profile	Available
Product end of life instructions	Need no specific recycling operations

The information provided in this documentation contains general descriptions and/or technical characteristics of the products contained herein. This documentation is not intended as a substitute for and is not to be used for determining suitability or reliability of these products for specific user applications. It is the duty of any such user or integrator to perform the appropriate and complete risk analysis, evaluation and testing of the products with respect to the relevant specific application or use thereof. Neither Schneider Electric Industries SAS nor any of its affiliates or subsidiaries shall be responsible or liable for misuse of the information contained herein.