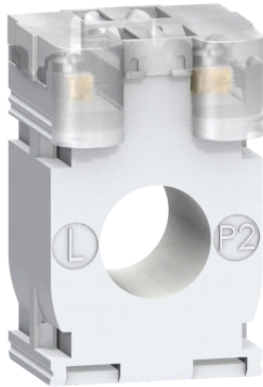


# METSECT5CC020

current transformer tropicalised DIN mount 200 5 for cables d. 21



## Main

Range	PowerLogic
Product name	CT
Product or component type	Current transformer
Secondary current	5 A
Accuracy class	Class 0.5 maximum power: 4 VA Class 3 maximum power: 6 VA Class 1 maximum power: 5.5 VA
[In] rated current	200 A

## Complementary

Current transformer type	Tropicalised for cable
Current transformer ratio	200/5
[Ith] conventional free air thermal current	12 kA
Dynamic withstand current	2.5 Ith
Safety factor	
[Ue] rated operational voltage	< 720 V AC at 50/60 Hz
[Ui] rated insulation voltage	3 kV
Mounting mode	By screws Clip-on
Mounting support	DIN rail Mounting plate
Width	44 mm outside
Height	65 mm outside
Depth	30 mm outside
Diameter	21 mm
Product weight	0.175 kg
[Uimp] rated impulse withstand voltage	3 kV
Electrical insulation class	Class B
Cable outer diameter	21 mm max
Sealing	With

## Environment

standards	VDE 0414 IEC 61869-2
product certifications	CE EAC
IP degree of protection	IP20
relative humidity	0...95 %
ambient air temperature for operation	-25...60 °C

## Offer Sustainability

Sustainable offer status	Green Premium product
RoHS (date code: YYWW)	Compliant - since 1427 - Schneider Electric declaration of conformity
REACH	Reference not containing SVHC above the threshold
Product environmental profile	Available

The information provided in this documentation contains general descriptions and/or technical characteristics of the products contained herein. This documentation is not intended as a substitute for and is not to be used for determining suitability or reliability of these products for specific user applications. It is the duty of any such user or integrator to perform the appropriate and complete risk analysis, evaluation and testing of the products with respect to the relevant specific application or use thereof. Neither Schneider Electric Industries SAS nor any of its affiliates or subsidiaries shall be responsible or liable for misuse of the information contained herein.

