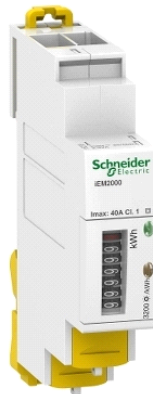


# A9MEM2000

modular single phase power meter iEM2000 - 230V - 40A



## Main

Range	Acti 9
Product name	Acti 9 iEM2000
Device short name	IEM2000
Product or component type	Energy meter

## Complementary

Poles description	1P + N
Type of measurement	Active power
Device application	Sub billing
Accuracy class	Active energy : class 1 according to IEC 62053-21
Analogue input type	Direct input
[In] rated current	40 A
Rated voltage	230 V +/- 20 %
Network frequency	50 Hz 60 Hz
Frequency measurement range	48...62 Hz
Technology type	Electronic
Display type	Electromechanical
Sampling rate	32 samples/cycle
Measurement current	0...40 A
Display digits	7
Maximum value measured	999999.9 kWh
Communication port protocol	-
Communication port support	-
Local signalling	Indicator light (green) : power ON Indicator light (yellow) : metering and activity 3200 p/kWh
Number of inputs	0
Number of outputs	0
Power consumption in VA	<= 10 VA
Mounting mode	Clip-on
Mounting support	DIN rail
Connections - terminals	Power circuit : bottom tunnel type terminals for 1 10 mm <sup>2</sup>
Tightening torque	Power circuit : 1.2 N.m
Standards	IEC 61557-12 IEC 62053-21
Product certifications	CE MID

## Environment

IP degree of protection	IP40 conforming to IEC 60529
ambient air temperature for operation	-20...70 °C at < 32 A -20...55 °C at >= 32 A

The information provided in this documentation contains general descriptions and/or technical characteristics of the performance of the products contained herein. This documentation is not intended as a substitute for and is not to be used for determining suitability or reliability of these products for specific user applications. It is the duty of any such user or integrator to perform the appropriate and complete risk analysis, evaluation and testing of the products with respect to the relevant specific application or use thereof. Neither Schneider Electric Industries SAS nor any of its affiliates or subsidiaries shall be responsible or liable for misuse of the information contained herein.

ambient air temperature for storage	-40...70 °C
relative humidity	95 % at 55 °C
colour	White
9 mm pitches	2
width	18 mm
height	95 mm
depth	67 mm
product weight	0.073 kg

### Offer Sustainability

Sustainable offer status	Green Premium product
RoHS (date code: YYWW)	Compliant - since 0926 - Schneider Electric declaration of conformity
REACH	Reference not containing SVHC above the threshold
Product environmental profile	Available
Product end of life instructions	Available