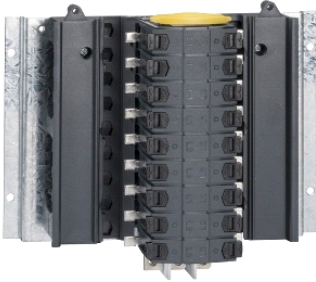


SEA9BN6TNA

Acti9 IsoBar B - panel fixing pan assembly - 6 ways
TP&N



Main

Range	Acti 9
Product or component type	Pan assembly
Device application	Distribution

Complementary

Range compatibility	Acti 9 IsoBar B distribution board
Provided equipment	Mounting plate
[In] rated current	250 A
Incomer device	Switch disconnecter 2P Terminal block 2P RCCB 2P
Protection device type	Residual current circuit breaker with overcurrent protection (RCBO) max 45 A Miniature circuit breaker (MCB) max 63 A
Number of ways	1 way(s) as incomer - 3P + N 6 way(s) as outgoer
Number of poles	18 nos. for 18 mm pole capacity
Length	236 mm
Width	210 mm
Depth	90 mm

Environment

Offer Sustainability

Sustainable offer status	Not Green Premium product
REACH	Reference not containing SVHC above the threshold

The information provided in this documentation contains general descriptions and/or technical characteristics of the products contained herein. This documentation is not intended as a substitute for and is not to be used for determining suitability or reliability of these products for specific user applications. It is the duty of any such user or integrator to perform the appropriate and complete risk analysis, evaluation and testing of the products with respect to the relevant specific application or use thereof. Neither Schneider Electric Industries SAS nor any of its affiliates or subsidiaries shall be responsible or liable for misuse of the information contained herein.