



# Fibre Closure Mounting Brackets & Work Stands

March 29, 2010

# FOSC-400-A & B Mounting Bracket

---

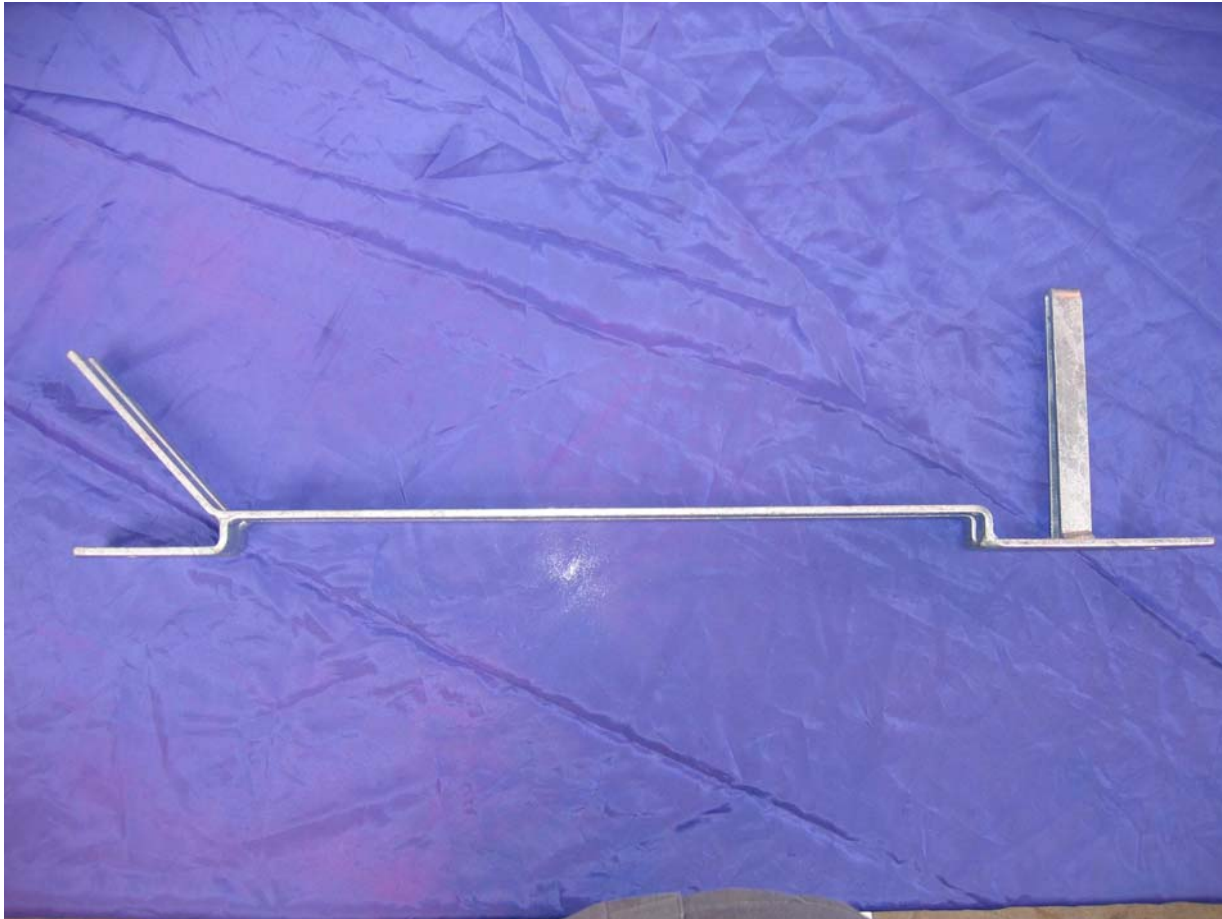


Part number 136501-000

Description FOSC-A/B-BRACKET-NZ01

# FOSC-400D5 Mounting Bracket

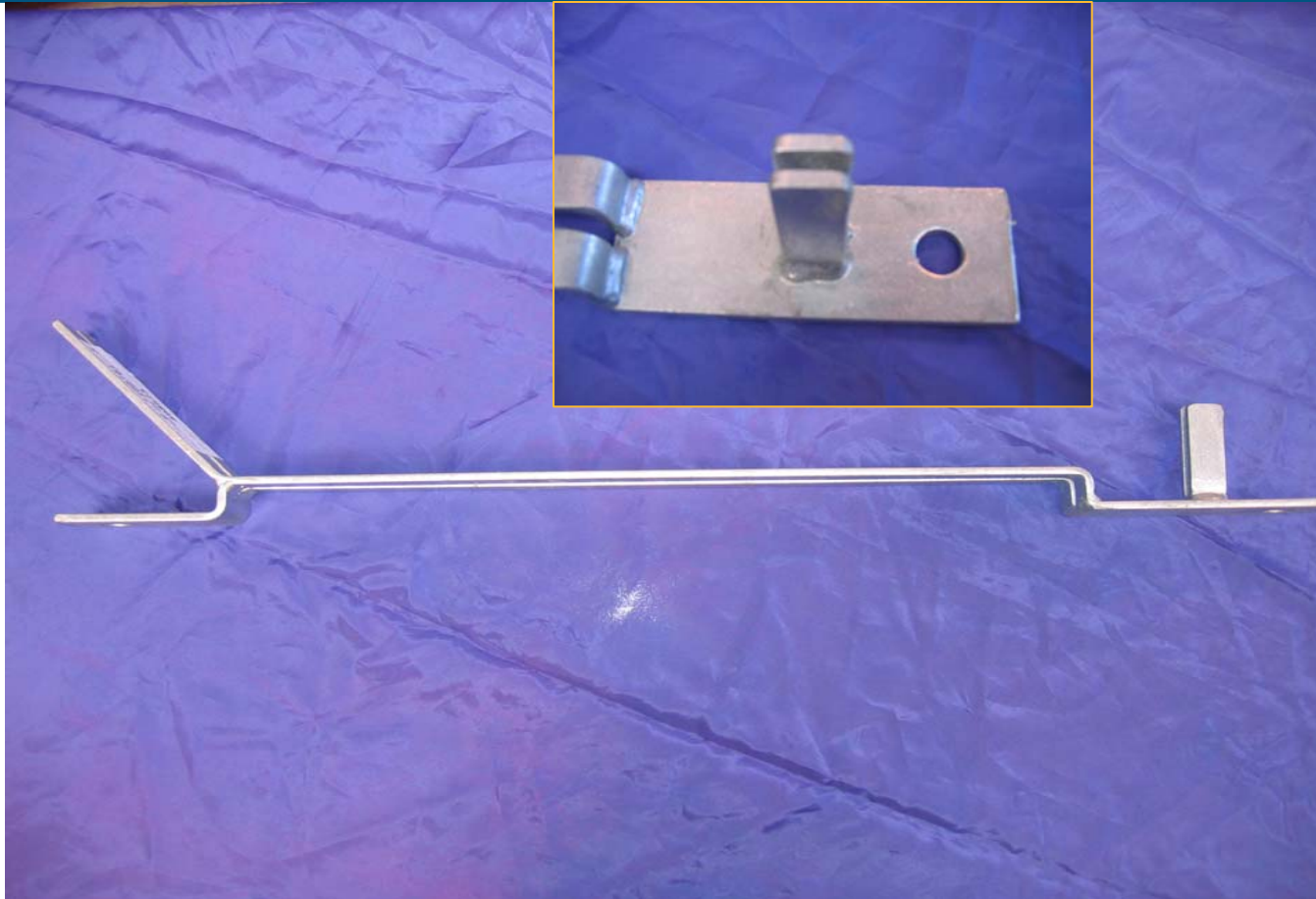
---



Part number 564348-000

Description FOSC-D-BRACKET-NZ01

# FOSC-450D & FIST-GCOG2-BE6 Mounting Bracket

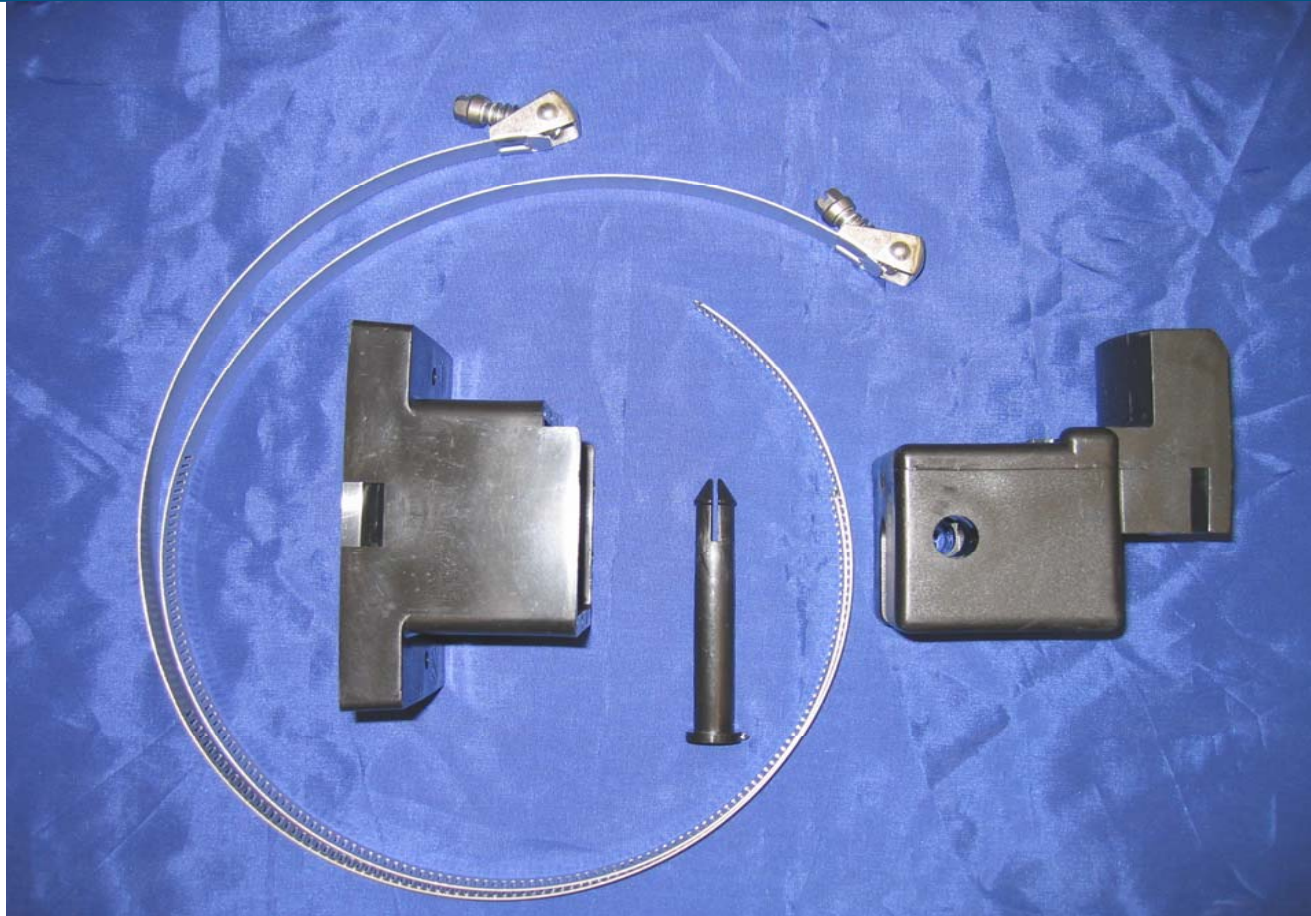


Part number 1155151-3

Description FOSC-450D-BRACKET-NZ01

# FOSC-400A & B

## Pole mounting bracket



Part Number 856344-000

Description FOSC-A/B-POLE-MOUNT

# FIST-TAP-100

## Mounting bracket

---

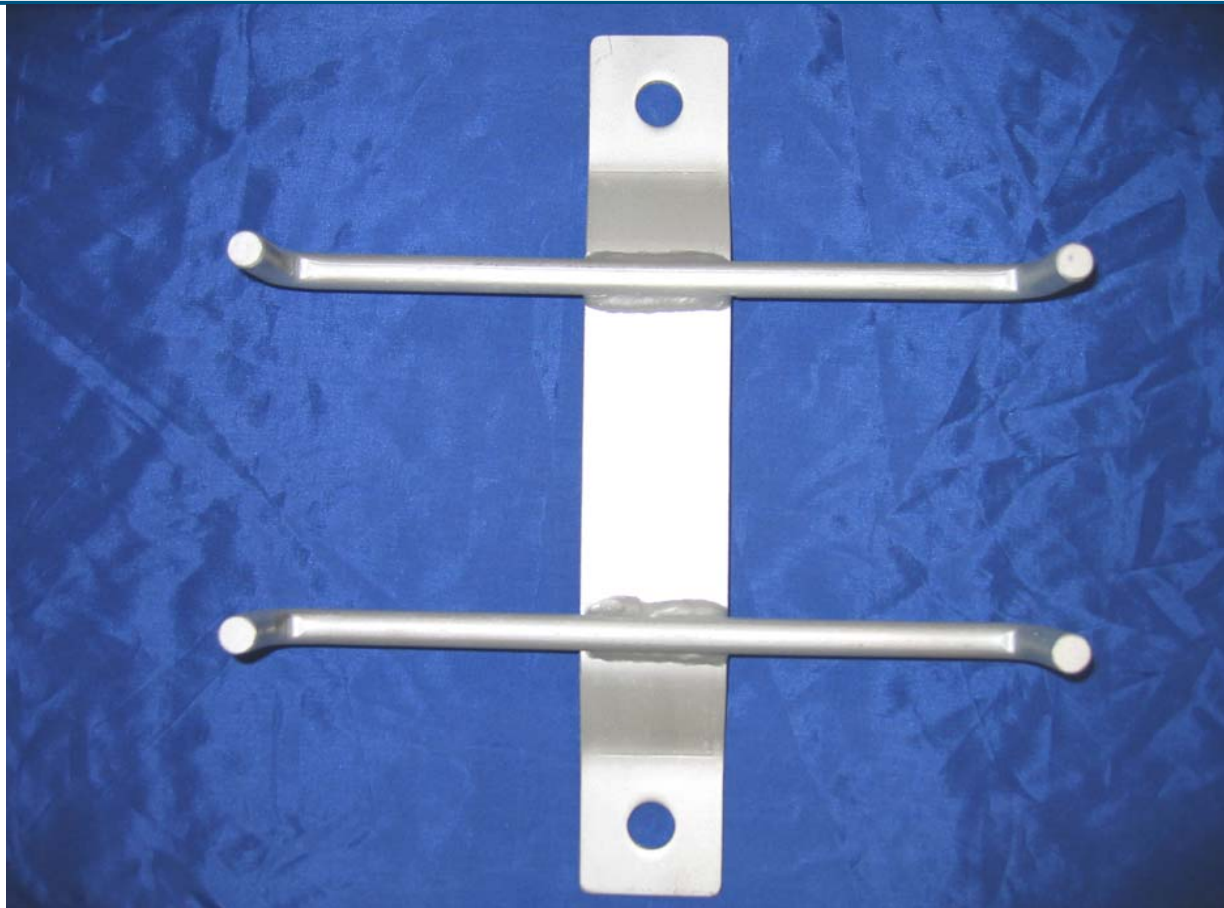


Part Number	1155151-2
Description	FIST-MOBRA-TAP-100-NZ

# FIST-GCO2-F

## Mounting bracket

---



Part Number	1155151-5
Description	FIST-MOBRA-FLAT-FC/FD-NZ

# FIST-GCO2

## Mounting brackets

---

### FIST-GCO2-BC6

**Bracket length** 530mm  
**Part number** 470784-000  
**Description** FIST-MOBRA-A859

### FIST-GCO2-BD6

**Bracket length** 615mm  
**Part number** 163624-000  
**Description** FIST-MOBRA-BD6-NZ

### FIST-GCO2-BE6

**Bracket length** 720mm  
**Part number** 015944-000  
**Description** FIST-MOBRA-NZ





# FIST-GCO2

## Work stand

Will accommodate  
FIST-GCO2  
FIST-GCOG2  
FOSC-400D  
FOSC-450D



Part number	593943-000
Description	FIST-INBRA-A859

# FIST & FOSC-A & B

## Work stand

Will accommodate

FIST-GCO2

FIST-GCOG2

FOSC-400D

FOSC-450D

FOSC-400A & B



Part number	1155875-1
Description	FIST/FOSC-INBRA-NZ

# FOSC-400A & B

Work stand head only. No G clamp

---



Part Number 1155875-2

Description FOSC-INBRA-HEAD-NZ

# FOSC-GCO2-F

Work stand head only. No G clamp



Part Number 1155875-4

Description FIST-INBRA-FLAT-FC/FD-NZ