

PRODUCT DATASHEET

HQI-E 1000 W/N

POWERSTAR HQI-E coated | Metal halide lamps with quartz technology for enclosed luminaires



AREAS OF APPLICATION

- Factories and workshops
- Exhibition halls and trade fairs
- Sports halls and multi-purpose halls
- Approved only for use in enclosed luminaires
- Outdoor applications only in suitable luminaires

PRODUCT BENEFITS

- Long lifetime
- E40 screw base for simple lamp handling
- UV values significantly below the maximum permitted thresholds to IEC 61167 thanks to UV filter

PRODUCT FEATURES

- POWERSTAR quartz technology
- Light colors: neutral white (NDL), daylight (D)



TECHNICAL DATA

Electrical data

Nominal wattage	1000.00 W
Rated wattage	1060.00 W
Lamp current	9.5 A
PFC capacitor at 50 Hz	85 µF ¹⁾
Nominal voltage	125 V
Ignition voltage	4.0 / 5.0 kVp ²⁾

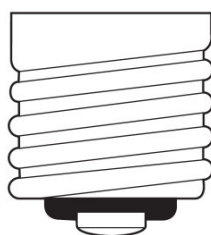
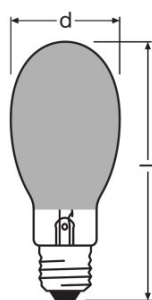
¹⁾ At rated voltage and $\cos \varphi \geq 0.9$

²⁾ Minimum / Maximum

Photometrical data

Rated lamp efficacy (standard condition)	94 lm/W
Rated luminous flux	100000 lm
Color rendering index Ra	62
Color temperature	3700 K
Light color	637
Rated LLMF at 2,000 h	0.85
Rated LLMF at 4,000 h	0.74
Rated LLMF at 6,000 h	0.67
Rated LLMF at 8,000 h	0.63
UV protection	Yes
Luminous flux	100000 lm

Dimensions & weight



E40
IEC 7004-24
DIN 49625

Diameter	165.0 mm
Length	380.0 mm
Product weight	395.00 g

Temperatures & operating conditions

Maximum permitted outer bulb temperature	500 °C
Maximum permitted base edge temperature	250 °C

Lifespan

Rated lamp survival factor at 2,000 h	0.99
Rated lamp survival factor at 4,000 h	0.98
Rated lamp survival factor at 6,000 h	0.92
Rated lamp survival factor at 8,000 h	0.77
Lifespan B50	9000 h

Additional product data

Base (standard designation)	E40
Design / version	Coated
Mercury content	105.0 mg

Capabilities

Dimmable	No
Burning position	h45
Enclosed luminaire required	Yes

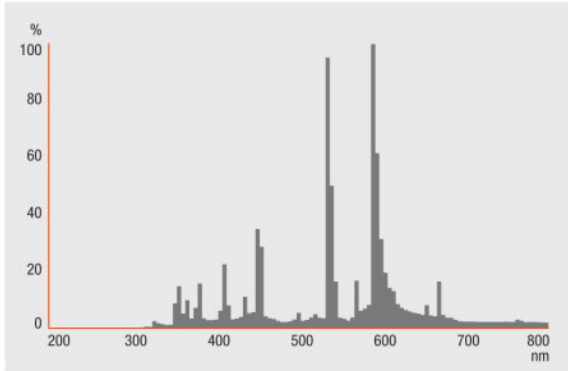
Certificates & standards

Energy efficiency class	A+
Energy efficiency class	A+
Energy consumption	1172 kWh/1000h

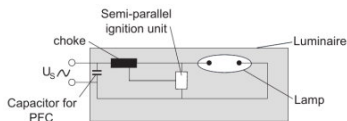
Country-specific categorizations

ILCOS	ME/UB-1000/638-H/E/SL-E40-165/380/V
-------	-------------------------------------

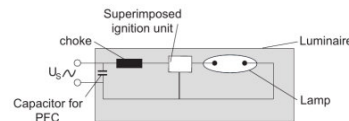
Light Distribution



Spectral power distribution



Circuit diagram



Circuit diagram

LOGISTICAL DATA

Product code	Product description	Packaging unit (Pieces/Unit)	Dimensions (length x width x height)	Volume	Gross weight
4008321528261	HQI-E 1000 W/N	Shipping carton box 6	545 mm x 448 mm x 377 mm	92.05 dm ³	4619.00 g

The mentioned product code describes the smallest quantity unit which can be ordered. One shipping unit can contain one or more single products. When placing an order, for the quantity please enter single or multiples of a shipping unit.

DISCLAIMER

Subject to change without notice. Errors and omission excepted. Always make sure to use the most recent release.