

# PRODUCT DATASHEET

## HE SL 35 W/865

SMARTLUX T5 HE | Tubular fluorescent lamps 16 mm, high efficiency



**TECHNICAL DATA**

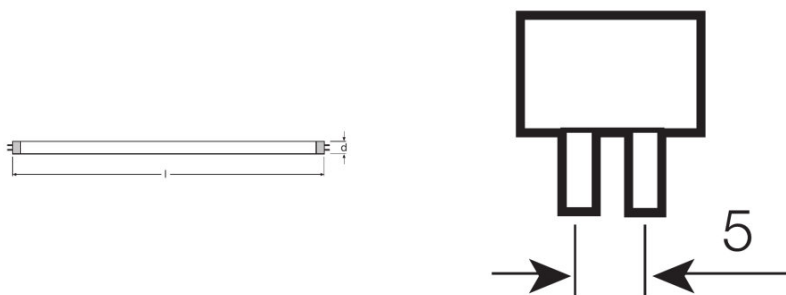
Electrical data

Nominal voltage	220 V
Nominal wattage	35.00 W
Rated lamp efficacy (HF data 25 °C)	Under clarification by authority and standardization body
Rated wattage	35.50 W

Photometrical data

Color rendering index Ra	≥80
Rated luminous flux	3050 lm
Luminous flux at 25 °C	3050 lm
Luminous flux at 35 °C	3500 lm
Light color	6500
Rated color temperature	6500 K
Nominal luminous flux	3050 lm
Rated LLMF at 2,000 h	0.95
Rated LLMF at 4,000 h	0.92
Rated LLMF at 6,000 h	0.91
Rated LLMF at 8,000 h	0.90
Rated LLMF at 12,000 h	0.90
Rated LLMF at 16,000 h	0.90
Rated LLMF at 20,000 h	0.89
Color temperature	6500 K
Luminous flux	3050 lm
Color rendering index Ra	≥80

Dimensions & weight



Tube diameter	16 mm
Length	1449 mm

<b>Length with base excl. base pins/connection</b>	1449.00 mm
<b>Diameter</b>	16.0 mm
<b>Maximum diameter</b>	16.0 mm

#### Temperatures & operating conditions

<b>Rated ambient temp.w.max.luminous flux</b>	35.0 °C
---	---------

#### Lifespan

<b>Lifespan</b>	20000 h
<b>Rated lamp survival factor at 2,000 h</b>	0.99
<b>Rated lamp survival factor at 4,000 h</b>	0.99
<b>Rated lamp survival factor at 6,000 h</b>	0.99
<b>Rated lamp survival factor at 8,000 h</b>	0.99
<b>Rated lamp survival factor at 12,000 h</b>	0.99
<b>Rated lamp survival factor at 16,000 h</b>	0.90
<b>Rated lamp survival factor at 20,000 h</b>	0.50
<b>Operation mode LLMF/LSF</b>	HF
<b>Rated lamp life time</b>	20000 h
<b>Nominal lamp life time</b>	20000 h

#### Additional product data

<b>Base (standard designation)</b>	G5
<b>Mercury content</b>	1.2 mg
<b>Show WEEE picto</b>	Yes

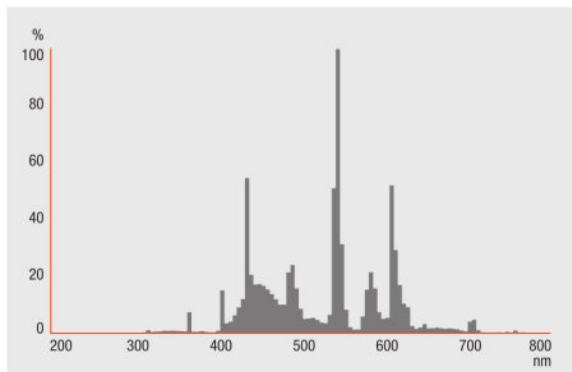
#### Capabilities

<b>Suitable for indoor</b>	Yes
----------------------------	-----

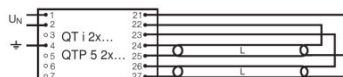
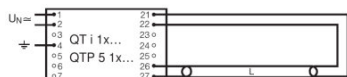
#### Certificates & standards

<b>Energy efficiency class</b>	A+
<b>Energy efficiency class</b>	A+
<b>Energy consumption</b>	40 kWh/1000h

Light Distribution



Spectral power distribution



Circuit diagram

Circuit diagram

LOGISTICAL DATA

Product code	Product description	Packaging unit (Pieces/Unit)	Dimensions (length x width x height)	Volume	Gross weight
4008321335722	HE SL 35 W/865	Shipping carton box 20	1511 mm x 104 mm x 88 mm	13.83 dm <sup>3</sup>	3498.00 g

The mentioned product code describes the smallest quantity unit which can be ordered. One shipping unit can contain one or more single products. When placing an order, for the quantity please enter single or multiples of a shipping unit.

DISCLAIMER

Subject to change without notice. Errors and omission excepted. Always make sure to use the most recent release.