

PRODUCT DATASHEET

HE SL 21 W/840

SMARTLUX T5 HE | Tubular fluorescent lamps 16 mm, high efficiency



TECHNICAL DATA

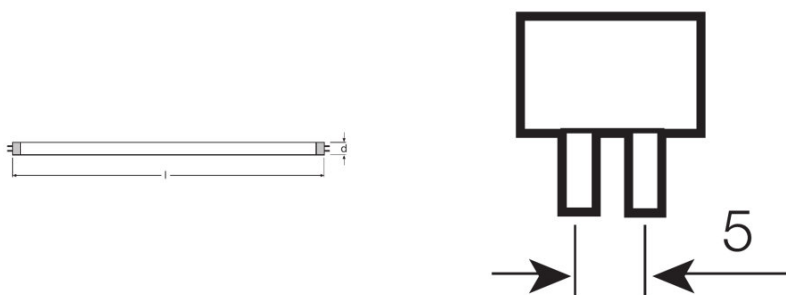
Electrical data

Nominal voltage	220 V
Nominal wattage	20.60 W
Rated lamp efficacy (HF data 25 °C)	92 lm/W
Rated wattage	20.60 W

Photometrical data

Color rendering index Ra	≥80
Rated luminous flux	1900 lm
Luminous flux at 25 °C	1900 lm
Luminous flux at 35 °C	2100 lm
Light color	4000
Rated color temperature	4000 K
Nominal luminous flux	1900 lm
Light color (designation)	LUMILUX Cool White
Rated LLMF at 2,000 h	0.95
Rated LLMF at 4,000 h	0.92
Rated LLMF at 6,000 h	0.91
Rated LLMF at 8,000 h	0.90
Rated LLMF at 12,000 h	0.90
Rated LLMF at 16,000 h	0.90
Rated LLMF at 20,000 h	0.89
Color temperature	4000 K
Luminous flux	1900 lm
Color rendering index Ra	≥80

Dimensions & weight



Tube diameter	16 mm
---------------	-------

Length	849.0 mm
Length with base excl. base pins/connection	849.00 mm
Diameter	16.0 mm
Maximum diameter	16.0 mm

Temperatures & operating conditions

Rated ambient temp.w.max.luminous flux	35.0 °C
---	---------

Lifespan

Lifespan	20000 h
Rated lamp survival factor at 2,000 h	0.99
Rated lamp survival factor at 4,000 h	0.99
Rated lamp survival factor at 6,000 h	0.99
Rated lamp survival factor at 8,000 h	0.99
Rated lamp survival factor at 12,000 h	0.99
Rated lamp survival factor at 16,000 h	0.90
Rated lamp survival factor at 20,000 h	0.50
Operation mode LLMF/LSF	HF
Rated lamp life time	20000 h
Nominal lamp life time	20000 h

Additional product data

Base (standard designation)	G5
Mercury content	1.2 mg
Show WEEE picto	Yes

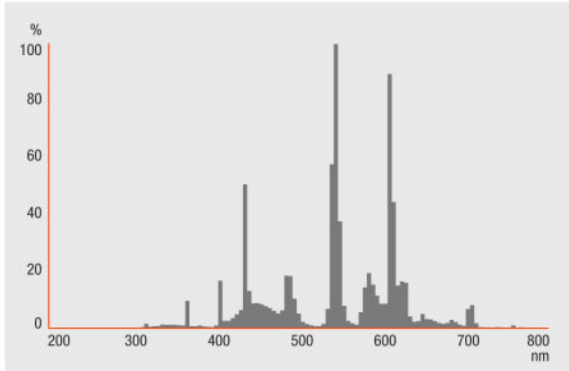
Capabilities

Suitable for indoor	Yes
----------------------------	-----

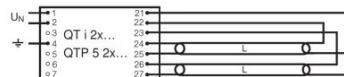
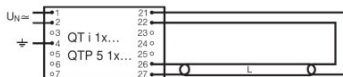
Certificates & standards

Energy efficiency class	A+
Energy efficiency class	A+
Energy consumption	24 kWh/1000h

Light Distribution



Spectral power distribution



Circuit diagram

Circuit diagram

LOGISTICAL DATA

Product code	Product description	Packaging unit (Pieces/Unit)	Dimensions (length x width x height)	Volume	Gross weight
4008321335487	HE SL 21 W/840	Shipping carton box 20	891 mm x 104 mm x 88 mm	8.15 dm ³	2283.00 g
4008321339492	HE SL 21 W/840	Shipping carton box 50	899 mm x 204 mm x 123 mm	22.56 dm ³	5970.00 g

The mentioned product code describes the smallest quantity unit which can be ordered. One shipping unit can contain one or more single products. When placing an order, for the quantity please enter single or multiples of a shipping unit.

DISCLAIMER

Subject to change without notice. Errors and omission excepted. Always make sure to use the most recent release.