

# PRODUCT DATASHEET

## HE SL 14 W/865

SMARTLUX T5 HE | Tubular fluorescent lamps 16 mm, high efficiency



**TECHNICAL DATA**

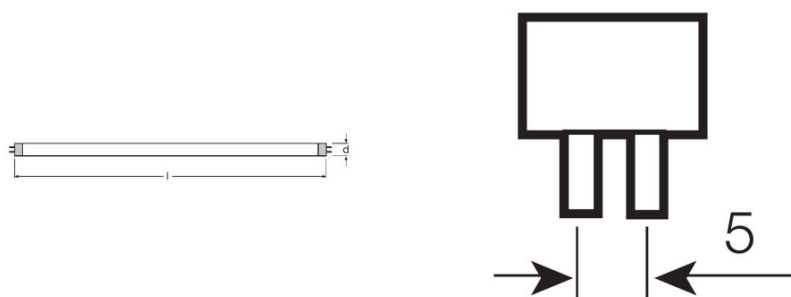
Electrical data

Nominal voltage	220 V
Nominal wattage	14.00 W
Rated lamp efficacy (HF data 25 °C)	Under clarification by authority and standardization body
Rated wattage	14.00 W

Photometrical data

Color rendering index Ra	≥80
Rated luminous flux	1100 lm
Luminous flux at 25 °C	1100 lm
Luminous flux at 35 °C	1300 lm
Light color	6500
Rated color temperature	6500 K
Nominal luminous flux	1100 lm
Rated LLMF at 2,000 h	0.95
Rated LLMF at 4,000 h	0.92
Rated LLMF at 6,000 h	0.91
Rated LLMF at 8,000 h	0.90
Rated LLMF at 12,000 h	0.90
Rated LLMF at 16,000 h	0.90
Rated LLMF at 20,000 h	0.89
Color temperature	6500 K
Luminous flux	1100 lm
Color rendering index Ra	≥80

Dimensions & weight



Tube diameter	16 mm
Length	549.0 mm

<b>Length with base excl. base pins/connection</b>	549.00 mm
<b>Diameter</b>	16.0 mm
<b>Maximum diameter</b>	16.0 mm

#### Temperatures & operating conditions

<b>Rated ambient temp.w.max.luminous flux</b>	35.0 °C
---	---------

#### Lifespan

<b>Lifespan</b>	20000 h
<b>Rated lamp survival factor at 2,000 h</b>	0.99
<b>Rated lamp survival factor at 4,000 h</b>	0.99
<b>Rated lamp survival factor at 6,000 h</b>	0.99
<b>Rated lamp survival factor at 8,000 h</b>	0.99
<b>Rated lamp survival factor at 12,000 h</b>	0.99
<b>Rated lamp survival factor at 16,000 h</b>	0.90
<b>Rated lamp survival factor at 20,000 h</b>	0.50
<b>Operation mode LLMF/LSF</b>	HF
<b>Rated lamp life time</b>	20000 h
<b>Nominal lamp life time</b>	20000 h

#### Additional product data

<b>Base (standard designation)</b>	G5
<b>Mercury content</b>	1.2 mg
<b>Show WEEE picto</b>	Yes

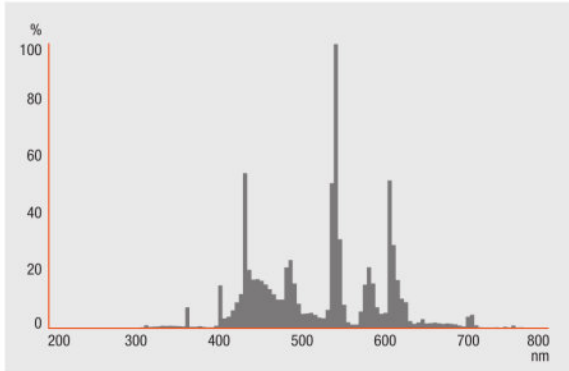
#### Capabilities

<b>Suitable for indoor</b>	Yes
----------------------------	-----

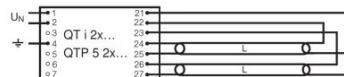
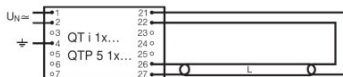
#### Certificates & standards

<b>Energy efficiency class</b>	A
<b>Energy efficiency class</b>	A
<b>Energy consumption</b>	16 kWh/1000h

Light Distribution



Spectral power distribution



Circuit diagram

Circuit diagram

LOGISTICAL DATA

Product code	Product description	Packaging unit (Pieces/Unit)	Dimensions (length x width x height)	Volume	Gross weight
4008321335289	HE SL 14 W/865	Shipping carton box 50	600 mm x 204 mm x 123 mm	15.06 dm <sup>3</sup>	3742.00 g
4008321335289	HE SL 14 W/865	Shipping carton box 20	591 mm x 104 mm x 88 mm	5.41 dm <sup>3</sup>	1528.00 g
4008321339430	HE SL 14 W/865	Shipping carton box 50	600 mm x 204 mm x 123 mm	15.06 dm <sup>3</sup>	3742.00 g

---

4052899200029	HE SL 14 W/865	Shipping carton box 10	581 mm x 116 mm x 57 mm	3.84 dm <sup>3</sup>	1245.00 g
---------------	----------------	---------------------------	----------------------------	----------------------	-----------

---

The mentioned product code describes the smallest quantity unit which can be ordered. One shipping unit can contain one or more single products. When placing an order, for the quantity please enter single or multiples of a shipping unit.

---

#### DISCLAIMER

Subject to change without notice. Errors and omission excepted. Always make sure to use the most recent release.