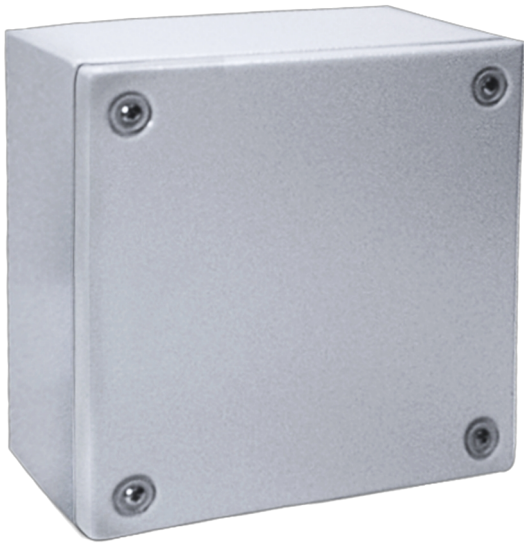


# Catalogue No: **STB 202008**

## TERMINAL BOX M/STEEL IP66 H200 x W200 x D80mm

Enclosures and Climate Control > Standard Enclosures > Terminal Boxes > Mild Steel Terminal Boxes > Terminal Boxes  
(Mounting Plates and DIN Profile Sold Separately)



Representative Photo Only  
(actual product may vary based on configuration selections)

### Enclosure Terminal Box Mild Steel IP66 H200xW200xD80mm

- 1.2mm mild steel construction provides a good level of corrosion protection in indoor environments
- Body is folded and seam welded ensuring IP66 and IK10 protection ratings to take all knocks, bumps and sprays
- Wall mounting holes are pre-punched with wall mount brackets, hinges and mounting plates available allowing flexibility between the same box in changing applications
- Comprehensive approvals and standards including CE, GOST and UL
- Accessories compatible between STB and SSTB range making installation across the ranges quick and easy

#### SPECIFICATIONS

Product Series	STB
Material, Body / Housing	Powder Coated Mild Steel material
Material thickness, body / housing	1.2 mm
Height	200 mm
Width	200 mm
Depth	80 mm
Weight	2 kg
IK Rating	IK10
IP Rating	IP66
Colour, Body / Housing	Light Grey (RAL 7035) colour
Finish, body / housing	Ripple body/housing
Details, body / housing	Folded and seam welded, four 8.5mm diameter holes for wall fixing
Details, earthing	Earthing studs M8x12mm in body and cover, M8 nuts, earth washers and earth labels
Material, Gasket / Seal	PUR / PU material
Material, Screws / Fastening	Stainless Steel Screws/Fastening
Certifications	CE C-UL GOST-R

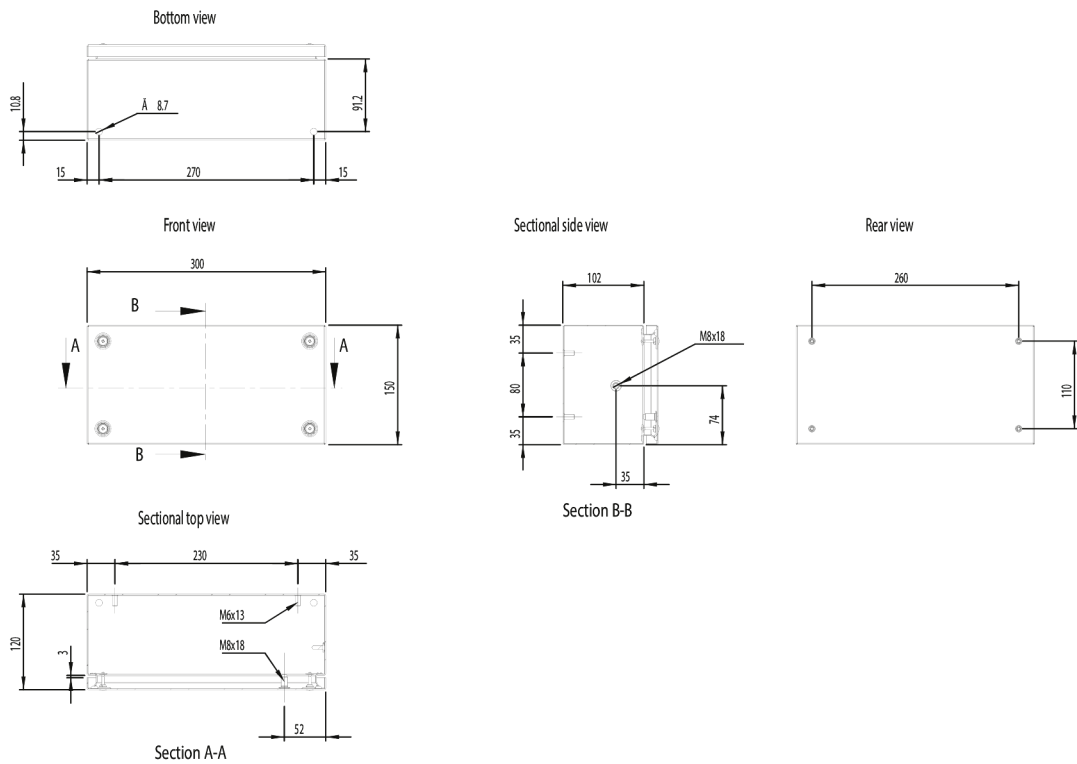
# Catalogue No: **STB 202008**

## TERMINAL BOX M/STEEL IP66 H200 x W200 x D80mm

Enclosures and Climate Control > Standard Enclosures > Terminal Boxes > Mild Steel Terminal Boxes > Terminal Boxes  
(Mounting Plates and DIN Profile Sold Separately)



REFERENCES	
IECEX Certificate	-
Supplier Declaration of Conformity:	-
Installation Guide:	-
User Manual:	-
Manufacturer Datasheet:	-
Manufacturer Catalogue & Product Selection:	-



Dimension Diagram