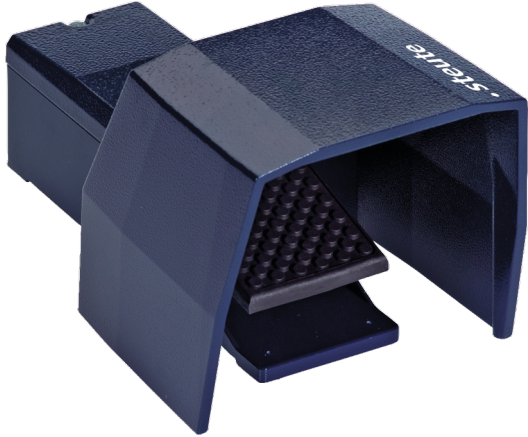


Catalogue No: **GFSM 10/1S**

FOOTSWITCH 1-PEDAL METAL GUARDED 1 NO 1 NC SNAP ACTION

Operator Control Devices > Pushbuttons and Control Switches > Foot Switches > Steute Foot Switches > Momentary Foot Switch with Relay Output > Standard Duty Foot Switches



GF Series Foot Switch, Aluminium Die-cast Enclosure, protective shield, snap action with double break, 1NC/1NO contacts, 4A/230V AC 2.5A/400V AC switching current, 4A/230V AC 2.5A/400V AC 1A/500V AC switching current, IP65, EN ISO 13849-1; EN 60947-5-1

- 1, 2 or 3-pedal versions
- With/without protective cover
- Max. 4 contacts

Representative Photo Only
(actual product may vary based on configuration selections)

SPECIFICATIONS

Product Series	GFS
Contact Action	Snap Action action
Number of Stages	1 qty
Potentiometer	No
Contact Configuration, Pedal A	1 NO + 1 NC
Guarded	Yes Y/N
Material, Guard	Metal material
Number of Pedals	1 qty
Connection / Termination	Screw Terminal(s)
Cable Entry	1 x [M20 x 1.5]
Wire / Conductor Size (Max)	2.5 mm ²
IP Rating	IP65
Standards Compliance	EN 60947-5-1 EN 954 / ISO 13849:1999 Category 1

REFERENCES

IECEX Certificate	-
Supplier Declaration of Conformity:	-
Installation Guide:	-
User Manual:	-
Manufacturer Datasheet:	-
Manufacturer Catalogue & Product Selection:	-