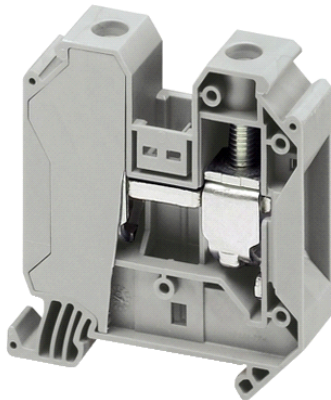


NSYTRV352

Lineryy passthrough terminal block - 35mm² 125A
single-level 1x1 screw - grey



Main

Range	Lineryy
Product name	Lineryy TR
Product or component type	Terminal block
Device short name	TRV
Terminal block type	Passthrough
Terminal block level	1
Mounting mode	Clip-on
Nominal cross section	35 mm ²
Length	60.2 mm
Colour	Grey
Quantity per set	Set of 50

Complementary

Width	16 mm
Height	65.7 mm
Connections - terminals	1 x screw terminal : upstream 1 x screw terminal : downstream
Number of terminals	2
Connection position	Sideways
Number of measurement input	2
Cable cross section	1.5...50 mm ² , solid 1.5...50 mm ² , flexible without cable end
Tightening torque	3.2...3.7 N.m
Wire stripping length	18 mm
Tool type	Connection : screwdriver Disconnection : screwdriver
[Ue] rated operational voltage	1000 V conforming to EN/IEC 60947-7-1 600 V CSA 690 V conforming to ATEX Exe II Ex II 2 GD 600 V cURus
[In] rated current	125 A conforming to EN/IEC 60947-7-1 150 A cURus 150 A CSA 126 A conforming to ATEX Exe II Ex II 2 GD
Material	Polyamide 6/6 (insulating case)
Dielectric loss	0.01 at 1 MHz conforming to IEC 60250 0.01 at 1 MHz conforming to VDE 0303-T4
Dielectric constant	3.7 at 1 MHz
Resistivity	10000 MΩ.m conforming to IEC 60093 10000 MΩ.m conforming to VDE 0303-T30
Surface resistance	1000 GΩ conforming to IEC 60093 1000 GΩ conforming to VDE 0303-T30
Creep resistance	500 CTI (> 400 kB) conforming to IEC 60093 500 CTI (> 400 kB) conforming to VDE 0303-T30
Flame retardance	V0, thickness 0.8 mm conforming to UL 94
Product weight	61 g
Range compatibility	Prisma - G Prisma - P Prisma Prisma - PH

The information provided in this documentation contains general descriptions and/or technical characteristics of the products contained herein. This documentation is not intended as a substitute for and is not to be used for determining suitability or reliability of these products for specific user applications. It is the duty of any such user or integrator to perform the appropriate and complete risk analysis, evaluation and testing of the products with respect to the relevant specific application or use thereof. Neither Schneider Electric Industries SAS nor any of its affiliates or subsidiaries shall be responsible or liable for misuse of the information contained herein.

Prisma - Pack
Spacial
Kaedra
TeSys

Product compatibility	Spacial enclosures
-----------------------	--------------------

Environment

product certifications	ATEX CSA CURus GL VDE IEC-Ex EAC
dielectric strength	1000 V conforming to IEC 60243-1
ambient air temperature for operation	-40...130 °C conforming to IEC 60216-1 -40...130 °C conforming to VDE 0304-T21

Offer Sustainability

Sustainable offer status	Green Premium product
RoHS (date code: YYWW)	Compliant - since 1052 - Schneider Electric declaration of conformity
REACH	Reference contains SVHC above the threshold
Product environmental profile	Available
Product end of life instructions	Need no specific recycling operations
