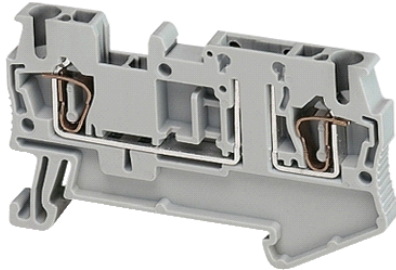


NSYTRR22TB

Lineryy carrier disc, block - 2.5mm² 20A single-level
1x1 spring



Main

| | |
|---------------------------------|------------------------------------|
| Range | Lineryy |
| Product name | Lineryy TR |
| Product or component type | Terminal block |
| Device short name | TRR |
| Terminal block type | Removable carrier disconnect |
| Associated connection component | Diode Blade Cylindrical fuse |
| Terminal block level | 1 |
| Mounting mode | Clip-on |
| Nominal cross section | 2.5 mm ² |
| Length | 60.5 mm |
| Colour | Grey |
| Quantity per set | Set of 50 |

Complementary

| | |
|--------------------------------|---|
| Fuse size | 5 x 20 mm 6 x 32 mm |
| Width | 5.2 mm |
| Height | 36.5 mm |
| Connections - terminals | 1 x spring terminal : upstream 1 x spring terminal : downstream |
| Number of terminals | 2 |
| Connection position | Top |
| Number of measurement input | 2 |
| Cable cross section | 0.08...2.5 mm ² , flexible without 0.8...4 mm ² , solid |
| Wire stripping length | 10 mm |
| Tool type | Connection : flat screwdriver Disconnection : flat screwdriver |
| [Ue] rated operational voltage | 400 V conforming to EN/IEC 60947-7-1 300 V CSA 300 V cURus |
| [In] rated current | 20 A conforming to EN/IEC 60947-7-1 16 A CSA 16 A cURus |
| Material | Polyamide 6/6 (insulating case) |
| Dielectric loss | 0.01 at 1 MHz conforming to IEC 60250 0.01 at 1 MHz conforming to VDE 0303-T4 |
| Dielectric constant | 3.7 at 1 MHz |
| Resistivity | 10000 MΩ.m conforming to IEC 60093 10000 MΩ.m conforming to VDE 0303-T30 |
| Surface resistance | 1000 GΩ conforming to IEC 60093 1000 GΩ conforming to VDE 0303-T30 |
| Creep resistance | 500 CTI (> 400 kB) conforming to IEC 60093 500 CTI (> 400 kB) conforming to VDE 0303-T30 |
| Flame retardance | V0, thickness 0.8 mm conforming to UL 94 |
| Product weight | 7.7 g |
| Range compatibility | Prisma - G Prisma - P |

The information provided in this documentation contains general descriptions and/or technical characteristics of the products contained herein. This documentation is not intended as a substitute for and is not to be used for determining suitability or reliability of these products for specific user applications. It is the duty of any such user or integrator to perform the appropriate and complete risk analysis, evaluation and testing of the products with respect to the relevant specific application or use thereof. Neither Schneider Electric Industries SAS nor any of its affiliates or subsidiaries shall be responsible or liable for misuse of the information contained herein.

Pragma
Prisma - PH
Prisma - Pack
Spacial
Kaedra
TeSys

| | |
|-----------------------|--------------------|
| Product compatibility | Spacial enclosures |
|-----------------------|--------------------|

Environment

| | |
|---------------------------------------|---|
| product certifications | CSA CURus EAC |
| dielectric strength | 1000 V conforming to IEC 60243-1 |
| ambient air temperature for operation | -40...130 °C conforming to IEC 60216-1 -40...130 °C conforming to VDE 0304-T21 |

Offer Sustainability

| | |
|----------------------------------|---|
| Sustainable offer status | Green Premium product |
| RoHS (date code: YYWW) | Compliant - since 1052 - Schneider Electric declaration of conformity |
| REACH | Reference not containing SVHC above the threshold |
| Product environmental profile | Available |
| Product end of life instructions | Need no specific recycling operations |
