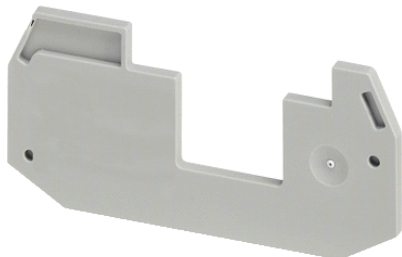


## NSYTRACEP24

NSYTR partial end cover for screw double-level terminal block 1x1 - 2.5 to 4mm<sup>2</sup>



### Main

Range	Linergy
Product name	Linergy TR
Product or component type	Partial cover plate
Device short name	TRA
Accessory / separate part category	Insulation accessory
Product compatibility	TRV screw terminal - passthrough terminal block TRV screw terminal - blade disconnect terminal block
Thickness	2.2 mm

### Complementary

Cable cross section	2.5 mm <sup>2</sup> 4 mm <sup>2</sup>
Number of terminals	2
Number of measurement input	4 2
Quantity per set	Set of 50
Product weight	2.6 g
Colour	Grey

### Environment

#### Offer Sustainability

Sustainable offer status	Green Premium product
RoHS (date code: YYWW)	Compliant - since 1052 - Schneider Electric declaration of conformity
REACH	Reference contains SVHC above the threshold
Product environmental profile	Available
Product end of life instructions	Need no specific recycling operations

The information provided in this documentation contains general descriptions and/or technical characteristics of the products contained herein. This documentation is not intended as a substitute for and is not to be used for determining suitability or reliability of these products for specific user applications. It is the duty of any such user or integrator to perform the appropriate and complete risk analysis, evaluation and testing of the products with respect to the relevant specific application or use thereof. Neither Schneider Electric Industries SAS nor any of its affiliates or subsidiaries shall be responsible or liable for misuse of the information contained herein.