

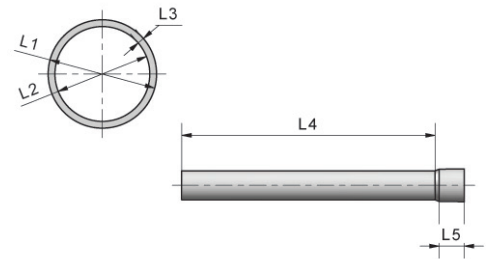
**Electrical Conduits & Fittings**

**Flexible Conduit**

**Electrical Grey Solar Heavy Duty Conduit:**

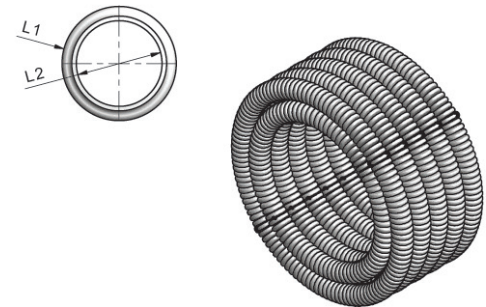
*Rigid - Manufactured to AS/NZS 2053.2*

Product Code	Typical Dimensions					
	Nominal Size (mm)	Mean OD (mm) L1	Mean ID (mm) L2	Wall Thickness (mm) L3	Nominal Length (m) L4	Socket Length (mm) L5
P600204S	20	19.7	15	2.3	4	16
P600254S	25	24.7	19.6	2.5	4	20
P600324S	32	31.7	26.2	2.7	4	25



*Corrugated - Manufactured to AS/NZS 2053.5*

Product Code	Typical Dimensions			
	Nominal Size (mm)	Mean OD (mm) L1	Mean ID (mm) L2	Nominal Length (m)
P600FC2050S	20	19.7	16.5	50
P600FC2550S	25	24.6	16.5	50
P600FC3250S	32	31.6	22	50



Note: • All drawings, dimensions, mass and volume are approximate only. If critical contact Iplex Pipelines.