



## ADAPTORS

## ADAPTOR PAL MALE TO F FEMALE

AP1/FF

FOXTEL: F10437



## ADAPTOR PAL FEMALE TO F FEMALE

AP3/FF



## ADAPTOR F MALE TO R/A F FEMALE

APF/FFR3

FOXTEL: F30573

3 GHz



## ADAPTOR F TO F BARREL

APFF/FF3

FOXTEL: F30583

3 GHz



## ADAPTOR F FEMALE TO QUICK PUSH ON F MALE

APFF/FQ3

FOXTEL: F30564

3 GHz



## ADAPTOR PUSH F MALE TO PUSH F MALE (5 PK)

DS/ZSV2S/SET

FOXTEL: F10458



5 ... 2200 MHz

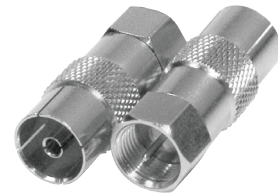


| Specifications            | DS/ZSV2S/SET |
|---------------------------|--------------|
| Impedance                 | 75 Ω         |
| Trough Loss Trunk TERR-RF | 0.2 dB       |
| Trough Loss Trunk SAT-IF  | 0.4 dB       |
| Dimensions (mm)           | 29 x 12 ∅    |

## ADAPTOR PAL FEMALE TO F MALE

AP3/F

FOXTEL: F10156



## ADAPTOR F MALE TO F MALE BARREL

APF/F

FOXTEL: F30563



## ADAPTOR F FEMALE TO BNC MALE

APFF/BNC



## ADAPTOR F TO F BARREL + NUT &amp; WASHER

APFF/FF3N

3 GHz



## ADAPTOR GROUNDING BLOCK 4 X F FEMALE TO F FEMALE

APFFGB4

FOXTEL: F30791

3 GHz

