

wall starters 20A

Wall starters are designed to be fitted to the wall to start the soft wiring circuit. Each wall starter is fitted with a Wieland GST 18/3 starter and inbuilt locking mechanism. Termination is made from underneath the plate.* The termination block will allow for the looping of 2.5mm² or the single termination of 4mm² cable.



Product Number	Description
150631	WALL MOUNT STARTER GST S-ENT - White
150630	WALL MOUNT STARTER GST S-ENT - Black
148063	WALL MOUNT STARTER GST S-ENT - Red *requires a hybrid lead, 148053 2000mm

surface starters - side entry 20A

The surface mount starter is designed for locations where cable access underneath the wall plate is not possible, but fixture of a soft wiring starter is required. Cable access to terminate the surface mount starter is gained from the rear of the mounted starter instead of underneath the plate.* Twin and Earth 2.5mm² cable can be wired directly into the back of the starter.*



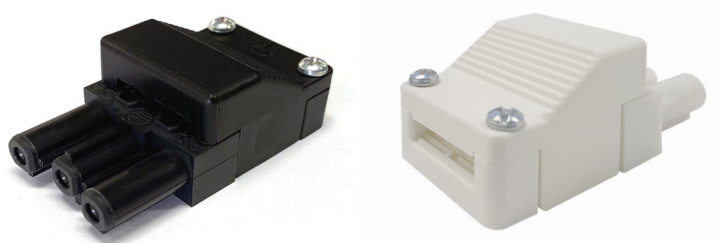
Product Number	Description
148036	SURFACE MOUNT STARTER GST S-ENT - White
148037	SURFACE MOUNT STARTER GST S-ENT - Black
148065	SURFACE MOUNT STARTER GST S-ENT - Red *requires a hybrid lead, 148053 2000mm

*The termination of and connection to all starter sockets must be performed by a licensed electrician. Installation couplers must not be connected or disconnected under load.

Wieland GST18/3 connectors are compliant with Australian and New Zealand standards AS/NZS61535

The starter socket is designed so that TPS (Twin and Earth 2.5mm² cable) can be wired directly into the back of the starter.* Starters sockets are a soft wiring connector that is small enough for use in ceilings, under raised flooring, in most ducted wall skirtings, inside partitions or screens, and similar positions where space is limited, and a surface mounted wall starter is not practical.

starter sockets 20A



Product Number	Description
150620	STARTER SOCKET FEMALE TPS 20A GST - Black
150621	STARTER SOCKET FEMALE TPS 20A GST - White

starter sockets slimline 20A



Product Number	Description
150629	STARTER SOCKET SLIMLINE FEMALE 20A GST - Black
150635	STARTER SOCKET SLIMLINE FEMALE 20A GST - White

starter cable 10A, thermal overload

10A starter cables are fitted with a thermal overload for overload protection. One end is fitted with a 10A three pin plug and the other is fitted with a Wieland GST18 female connector.



Product Number	Description
344000	STARTER CABLE 3PT-O GST-F 2.0 - Black
344001	STARTER CABLE 3PT-O GST-F 2.0 - White

*The termination of and connection to all starter sockets must be performed by a licensed electrician. Installation couplers must not be connected or disconnected under load.

Wieland GST18/3 connectors are compliant with Australian and New Zealand standards AS/NZS61535