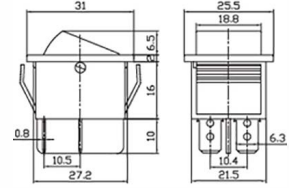
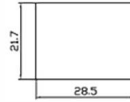


RS-201-1A

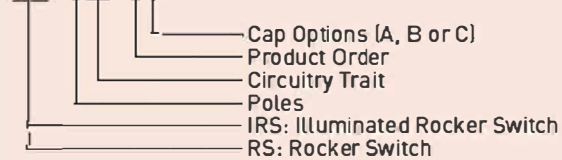
ON-OFF
15Amp 240V
DPST 4Pin



RS-2 & IRS-2 Series

Ordering Information

IRS-201-1A



Specifications

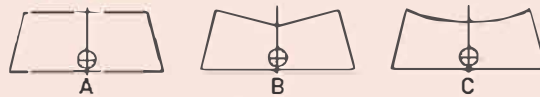
Rating: 15A 250VAC
Contact Resistance: 35m Ω max
Insulation Resistance: 500VDC 100M Ω min
Dielectric Strength: 150VAC, 1 Minute
Operating Temperature: -25°C ~ +85°C
Electrical Life: 10,000 Cycles

Circuitry trait

01	ON	-	OFF
02	ON	-	ON
11	[ON]	-	OFF
03	ON	OFF	ON
13	ON	OFF	[ON]
23	[ON]	OFF	[ON]

[]: Indicates Momentary

Cap options



Cap colour

Red

Base colour

Black