

SLEGERS
INSTALLATION
PRODUCTS



Double Pole Module Socket Outlet

New

Simple mounting for a reliable power source

- » High quality with excellent features, including unique shutter protection and patented double pole auto switching design

Double Pole Auto Switching GPO »

Product Overview

Introducing the Slegers Double Pole Module Socket Outlets, with auto switch and shutter protection. Our range has been designed with an impressive array of packed in features with safety first and foremost in mind. A compact and modular design allows for varied applications such as temporary power, worksites, portable buildings, power outlets for switchboards & meter enclosures, and various power supply applications.

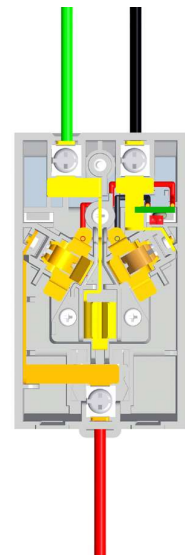
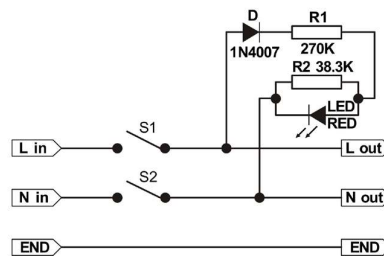
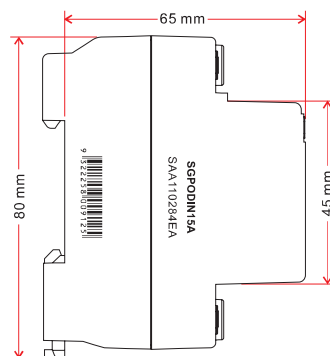
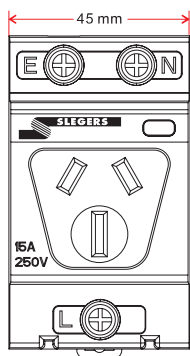
Complies with
AS/NZS3112



Features

- » Available in 10Amp and 15 Amp versions
- » Complies with AS/NZS 3112
- » Fast & easy handling
- » Simple mounting to 35mm Din Rail
- » Body width 45mm
- » Robust design and construction
- » Unique shutter protection design
- » Patented double pole auto switching of both Line and Neutral
- » LED display of "Power On"

Technical Data



Cat No	Description	Rated Current	Rated Voltage	IP Rating	Frequency	Screw Torque	Pack Qty
SGPODIN10A	DIN Mounted, Double Pole, Auto Switched GPO	10 Amp	240 V	IP20	50 Hz/60Hz	2.5Nm	1
SGPODIN15A	DIN Mounted, Double Pole, Auto Switched GPO	15 Amp	240 V	IP20	50 Hz/60 Hz	2.5Nm	1