

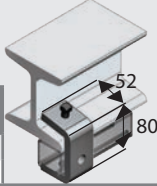
FASTENERS

E1271 BEAM CLAMP

506kg Working Load when used in pairs.

Box Qty: **10**

Available Finish	Part Number	Service Guide
H	E1271H	A
S	E1271S	A

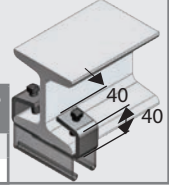


E1272 BEAM CLAMP

373kg Working Load when used in pairs.

Box Qty: **25**

Available Finish	Part Number	Service Guide
H	E1272H	A
S	E1272S	A



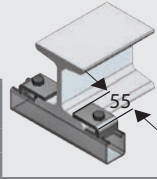
STRUT SYSTEMS

E1386 BEAM CLAMP

440kg Working Load when used in pairs.

Box Qty: **50**

Available Finish	Part Number	Service Guide
H	E1386H	A
S	E1386S	A

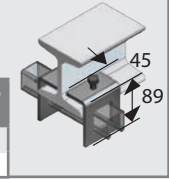


E1796 BEAM CLAMP

509kg Working Load when used in pairs.

Box Qty: **5**

Available Finish	Part Number	Service Guide
H	E1796H	A
S	E1796S	A



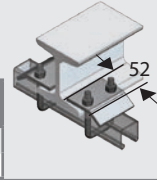
CABLE SUPPORTS

E2785 BEAM CLAMP

407kg Working Load when used in pairs.

Box Qty: **10**

Available Finish	Part Number	Service Guide
H	E2785H	A
S	E2785S	A

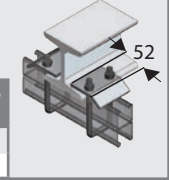


E2786 BEAM CLAMP

407kg Working Load when used in pairs.

Box Qty: **10**

Available Finish	Part Number	Service Guide
H	E2786H	A
S	E2786S	A



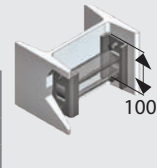
FIRERATED

E3087 BEAM CLAMP

Slip Load: **398kg**

Box Qty: **5**

Available Finish	Part Number	Service Guide
H	E3087H	A
S	E3087S	A

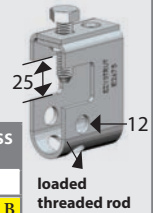


FOLDED BEAM CLAMP

E2675 Working Load when used in pairs is **565kg** and Box Qty **20**.

E2676 Working Load when used in pairs is **615kg** and Box Qty **15**.

Threaded Rod	Hot Dip Galvanised	Stainless Steel
M10	E2675H A	-
M12	E2676H A	E2676S B



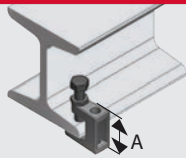
PIPE SUPPORTS

EBC BEAM CLAMP

EBC10 Working Load when used in pairs is **150kg** and Box Qty **20**.

EBC12 Working Load when used in pairs is **250kg** and Box Qty **15**.

Threaded Rod	A	Hot Dip Galvanised	Zinc Plated
M10	44	EBC10H A	EBC10Z A
M12	54	EBC12H A	-

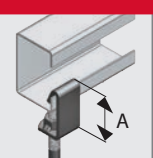


EPC BEAM CLAMP

EPC10 Working Load when used in pairs is **102kg** and Box Qty **10**.

EPC12 Working Load when used in pairs is **108kg** and Box Qty **10**.

Threaded Rod	A	Hot Dip Galvanised	Zinc Plated
M10	50	EPC10H B	EPC10Z A
M12	54	-	EPC12Z A



Service Guide Key: **A** Usually in stock at all branches **B** Usually in stock at head office
C Normal lead time **D** Made to Order (lead time on enquiry)