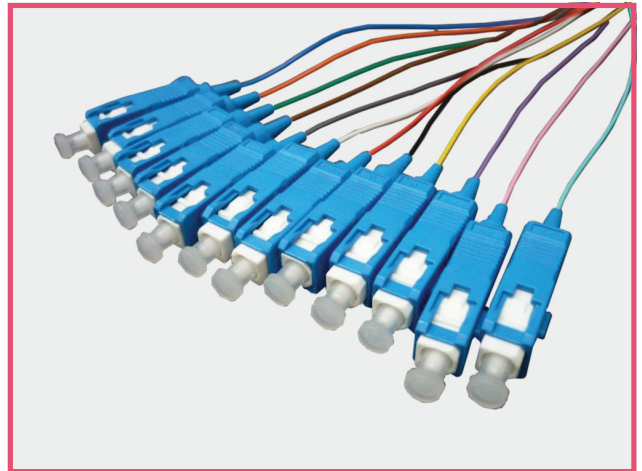


Optical Fibre Pigtails

Features

- Available for single mode and multimode
- Standard in 0.9mm (Available with 3mm or 2mm)
- Available in standard and custom configurations
- Low back reflection and insertion loss
- Ceramic ferrule
- SC, LC, ST, FC, MTRJ, SC/a, LC/a, Connectors
- Available in single pack of white
- 12 colour multi-pack IEC colours
- Custom Lengths and Colours available

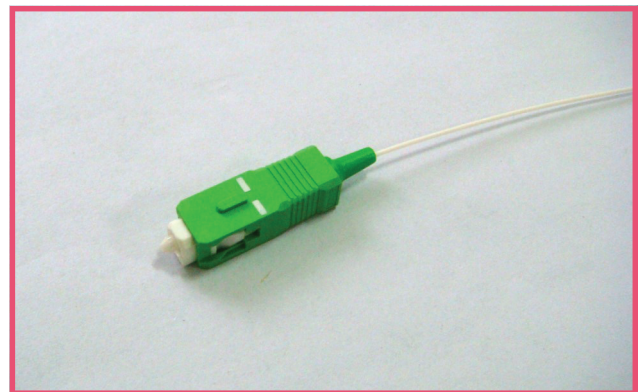


Fibre Types and Polishes

50/125µm and 62.5/125µm for multimode
9/125µm for single mode, UPC and APC polish

Typical/Maximum Insertion Loss

≤ 0.15 / 0.30 dB for UPC single mode
≤ 0.15 / 0.30 dB for APC single mode
≤ 0.20 / 0.30 dB for multimode



Maximum Return Loss

≥ 50 dB for UPC single mode fibre
≥ 60 dB for APC single mode fibre

Physical Environment:

Operating temperature:

Bend Radius:

Indoor / Splice Enclosure

20c to +70c

Minimum 25mm

Standards

IEC61300-2

AS/ACIF S008:2001

G.652D Low Water Peak (Single Mode)

www.selectdata.com.au

07 3556 1480