

Popular Products for Solar PV

DC SOLAR CABLE 1500V DC IEC 62930



ELECTRON BEAM CROSS-LINKED PV DC string cable - single core

Part No.	Description
SC1C4-1000	1X4mm SDI Solar IEC 62930 (1000m)
SC1C6-500	1X6mm SDI Solar IEC 62930 (100m)
SC1C6-1000	1X6mm SDI Solar IEC 62930 (1000m)
SC1C10-500	1X10mm SDI Solar IEC 62930 (500m)



ELECTRON BEAM CROSS-LINKED PV DC string cable - single core

Part No.	Description
RC1C16-1000	1x16mm SDI Solar IEC 62930 1000m
RC1C25-500	1x25mm SDI Solar IEC 62930 (500m)
RC1C35-500	1x35mm SDI Solar IEC 62930 (500m)



RALOS

RALOS

ELECTRON BEAM CROSS-LINKED PV DC string cable - twin core

Part No.	Description
RC2C4-100	2x4mm TWIN Solar IEC 62930 (100m)
RC2C4-500	2x4mm TWIN Solar IEC 62930 (500m)
RC2C6-100	2x6mm TWIN Solar IEC 62930 (100m)
RC2C6-500	2x6mm TWIN Solar IEC 62930 (500m)
RC2C10-100	2x10mm TWIN Solar IEC 62930 (100m)
RC2C10-500	2x10mm TWIN Solar IEC 62930 (500m)



SOLAR CONNECTORS

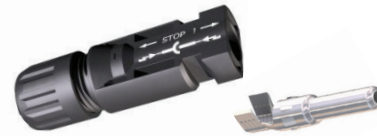


GENUINE MC4 CONNECTOR SYSTEM



PV-KBT4 Range

Female (socket) Cable Coupler	Conductor size (mm ²)	Cable OD clamping range (mm)	Current rating (A)
32.0010P0001	2.5	5.0 - 6.0	22.5
32.0014P0100	4 - 6	5.0 - 6.0	39
32.0016P0001	4 - 6	5.9 - 8.8	39
32.0034P0001	10	5.9 - 8.8	45



PV-KST4 Range

Male (plug) Cable Coupler	Conductor size (mm ²)	Cable OD clamping range (mm)	Current rating (A)
32.0011P0001	2.5	5.0 - 6.0	22.5
32.0015P0100	4 - 6	5.0 - 6.0	39
32.0017P0001	4 - 6	5.9 - 8.8	39
32.0035P0001	10	5.9 - 8.8	45

MC4 BRANCH PLUGS



PV-AZB4 Branch socket

32.0018	2 x Female - 1 x Male
---------	-----------------------



PV-AZS4 Branch plug

32.0019	2 x Male - 1 x Female
---------	-----------------------



PV-ADB4 Range Female panel receptacle

32.0076P0001	2.5mm ² conductor
32.0078P0001	4-6mm ² conductor
32.0107P0001	Socket Pin



PV-ADSP4 Range Male panel receptacle

32.0077P0001	2.5mm ² conductor
32.0079P0001	4-6mm ² conductor
32.0507P0001	Plug pin

SOLAR CONNECTORS



GENUINE MC4 CONNECTOR SYSTEM EN50521 Compliant IP68, 1500V DC



Pre-assembled leads	4mm ² leads	6mm ² leads
2 metre	XPMC4-4/2M	XPMC4-6/2M
5 metre	XPMC4-4/5M	XPMC4-6/5M
8 metre	XPMC4-4/8M	XPMC4-6/8M
10 metre	XPMC4-4/10M	XPMC4-6/10M
12 metre	XPMC4-4/12M	XPMC4-6/12M
15 metre	XPMC4-4/15M	XPMC4-6/15M

ORIGINAL MC4
MADE IN SWITZERLAND

MC LOGO

BLACK O-RING

✓ GENUINE MC ✓ PROVEN QUALITY ✓ FULLY TESTED ✓ RELIABLE

COPY
MADE WHERE?

NO MC LOGO

RED O-RING

✗ INFERIOR COPY ✗ INFERIOR QUALITY ✗ CAN BE DISASTROUS ✗ RISK TO WARRANTIES

A growing number of suspect copies of Staübli's MC4 Solar components have recently appeared on the market. Stringent testing* has revealed substantial deficiencies in quality resulting in compromised safety and impaired system performance.

*A temperature increase test by the TÜV Rheinland with copied PV connectors from various manufacturers showed significant differences in higher temperature. This was in stark contrast to the excellent results of the MC4-PV connectors.



GENUINE MC4-EVO 2 CONNECTOR SYSTEM IEC 62852 Approved, 1500V DC



PV-KBT4-EVO 2 Range

Female (socket) Cable Coupler	Conductor size (mm ²)	Cable OD clamping range (mm)	Current rating (A)
32.0086P0001	4 - 6	4.7 - 6.4	45 - 53
32.0088P0001	4 - 6	6.4 - 8.4	45 - 53
32.0092P0001	10	6.4 - 8.4	69



PV-KST4-EVO 2 Range

Male (plug) Cable Coupler	Conductor size (mm ²)	Cable OD clamping range (mm)	Current rating (A)
32.0087P0001	4 - 6	4.7 - 6.4	45 - 53
32.0089P0001	4 - 6	6.4 - 8.4	45 - 53
32.0093P0001	10	6.4 - 8.4	69



PV-ADB4-EVO 2

Female (socket) Cable Coupler	Conductor size (mm ²)	Current rating (A)
32.0022P0001	4 - 6	42A 4.0mm ² 47A 6.0mm ²
32.0121P0001	Socket pin	



PV-ADS4-EVO 2

Male (plug) Cable Coupler	Conductor size (mm ²)	Current rating (A)
32.0023P0001	4 - 6	42A 4.0mm ² 47A 6.0mm ²
32.0521.P0001	Socket pin	



PV-AZB-EVO 2

Branch socket
32.0196 2 x Female - 1 x Male



PV-AZS-EVO 2

Branch plug
32.0197 2 x Male - 1 x Female

SOLAR CONNECTORS

Multi-Contact



STÄUBLI GROUP



SAFETY LOCK CLIP MC4



Part No.	Description
32.5280	PV-SSH4 Lock Clip

MC4 SEALING CAPS



Part No.	Description
32.0716	Suits female
32.0717	Suits male

OPEN END SPANNER (PAIR)



Part No.	Description
32.6024	MC4 PV-MS Spanner
32.6058	MC4 EVO 2 PV-MS Spanner
32.6066	MC4 EVO 2 Unlocking Tool

TOOLING



Stripping pliers

Part No.	Description
32.6027	PV-AZM Stripping Pliers



MC4 crimp tool (includes locator and insert)

Part No.	Description
32.6020.19100	2.5, 4, 6mm ² Crimp Tool



Low cost MC4 crimp tool

Part No.	Description
32.6025	2.5, 4, 6mm ² crimp tool

SOLAR ACCESSORIES

CABLE CLIPS

Long-lasting, wire management clips



Part No.	Description	Part No.	Description	Part No.	Description	Part No.	Description	Part No.	Description	Part No.	Description
ACC	Stainless Steel Cable Clip (PK=100)	ACCPV	Stainless Steel Cable Clip (PK=100)	ACC-R4	ACC-R4 Cable Clip (PK=100)	ACC-FPV90	2 Wire Frame Management Clip (PK=100)	ACC-F90-1	1 Wire 90 Degree Management Clip (PK=100)	ACC-F4F	4 Wire Frame Management Clip (PK=100)

BLACK POLYESTER COATED STAINLESS STEEL CABLE TIES

316 grade stainless steel



Part No.	Length (mm)	Width (mm)
TS1-4-46200-316C	200	4.6
TS1-4-46360-316C	360	4.6
TS1-4-79200-316C	200	7.9
TS1-4-79360-316C	360	7.9

Part No.	Length (mm)	Width (mm)
TS1-4-46200-316C	200	4.6
TS1-4-46360-316C	360	4.6
TS1-4-79200-316C	200	7.9
TS1-4-79360-316C	360	7.9



Part No.	Description
HT-338	Cable Tie Gun

IN-LINE FUSE ASSEMBLY

Multi-Contact



STÄUBLI GROUP

STÄUBLI

PV-K/ILF IN-LINE FUSE 1500V DC

Part No.	Description
1500ILF15	IN-LINE FUSE 1500V DC 15A MC4 lead length 55cm
1500ILF20	IN -LINE FUSE 1500V DC 20A MC4 lead length 55cm

More options available on request.



FUSING

Gaue

SOLARtec

NOARK

GPV SERIES FUSES

1000V DC, 10 x 38mm fuse



Part No.	Description
30F15PV	15A 1000VDC gPV Fuse 10x38mm
30F20PV	20A 1000VDC gPV Fuse 10x38mm

DIN RAIL MOUNT FUSE CARRIERS

1000V DC, 10 x 38mm fuse



Part No.	Description
212PV	2 Pole PV Fuse Carrier 10x38mm 1000V DC

NH FUSE SWITCH DISCONNECTORS

For use on stand alone systems incorporating battery banks



Part No.	Description
713	Fuse disconnecter 3 pole NH00 160A

NOARK FUSE CARRIERS

1000V DC



Includes LED Indicator

Part No.	Description
N85500	Ex9FP single pole PV Fuse Holder 1000VDC
N85515	Ex9FP Double Pole PV Fuse Holder 1000VDC

DC CIRCUIT BREAKERS

360V AND 720V DC CIRCUIT BREAKERS - NON-POLARISED

Part No.	Description	Part No.	Description
N84449	Ex9BP 2P DC360V K10 IEC	N84454	Ex9BP 2P DC360V K40 IEC
N84450	Ex9BP 2P DC360V K16 IEC	N84455	Ex9BP 2P DC360V K50 IEC
N84451	Ex9BP 2P DC360V K20 IEC	N84456	Ex9BP 2P DC360V K63 IEC
N84452	Ex9BP 2P DC360V K25 IEC	N84476	Ex9BP 4P DC720V K16 IEC
N84453	Ex9BP 2P DC360V K32 IEC	N84479	Ex9BP 4P DC720V K32 IEC



HIGH CURRENT, NON-POLARISED

Part No.	Description
N28903	9MD2B TMD200 2PDC MCCB
N26027	9MD2B TMD400 3PDC MCCB
N28901	9MD2B TMD160 2PDC MCCB
N28905	9MD2B TMD250 2PDC MCCB
N28708	9MD1B TMD100 2PDC MCCB
N28709	9MD1B TMD125 2PDC MCCB



AUXILIARY ALARM

Part No.	Description
N86201	Auxiliary contact 3111



NOARK